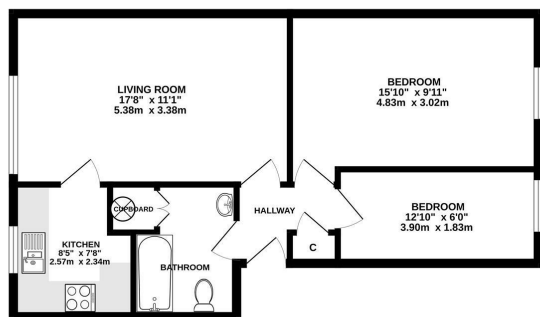




Keith  
Ashton

Gresham Road,  
Brentwood

FIRST FLOOR  
582 sq.ft. (54.0 sq.m.) approx.



TOTAL FLOOR AREA: 582 sq ft (54.0 sq.m) approx.  
Measurements are approximate. Not to scale. Represent approximate only.  
Made with Makroplan 2020

£240,000



Flat 22 Gresham Court Gresham Road, Brentwood, CM14 4HW

We are delighted to bring to market this first floor apartment, ideally situated within easy reach of Brentwood High Street and just a stone's throw from Brentwood station, offering excellent transport links into London and beyond.

The property boasts a spacious living room, a practical fitted kitchen, two well-proportioned bedrooms, and a family bathroom. Further benefits include a garage en bloc, providing additional storage or secure parking, along with access to well-maintained communal gardens.

This home would make an ideal purchase for first-time buyers, commuters, or investors alike, thanks to its convenient location and well-balanced accommodation.

Energy Efficiency Rating			Environmental Impact (CO <sub>2</sub> ) Rating		
Very energy efficient - lower running costs	Current	Potential	Very environmentally friendly - lower CO <sub>2</sub> emissions	Current	Potential
(81-91) <b>A</b>			(81-91) <b>A</b>		
(69-80) <b>B</b>			(69-80) <b>B</b>		
(55-68) <b>C</b>			(55-68) <b>C</b>		
(39-54) <b>D</b>			(39-54) <b>D</b>		
(21-38) <b>E</b>			(21-38) <b>E</b>		
(13-20) <b>F</b>			(13-20) <b>F</b>		
(1-12) <b>G</b>			(1-12) <b>G</b>		
Not energy efficient - higher running costs			Not environmentally friendly - higher CO <sub>2</sub> emissions		
EU Directive 2002/91/EC	78	82	EU Directive 2002/91/EC		
England & Wales			England & Wales		

**SERVICES:**

Local Authority: Brentwood  
Council tax band: C  
Post code: CM14 4HW

**VIEWING:**

Strictly by prior arrangement with Keith Ashton Estate Agents

**OPENING HOURS:**

Monday to Friday: 8.45AM - 6.30PM | Saturdays: 9AM - 5.30PM | Sundays: 10AM - 2PM

**MORTGAGE INFORMATION:**

We offer the additional facility of an in-house Independent Financial Adviser who will access all mortgage lenders with the purpose of providing you with the benefit of choice. For quotations or comparables please call 01277 260858 or visit our interactive website at [www.mortgagebusiness.net](http://www.mortgagebusiness.net)



We the Agent have not tested any apparatus, fittings or services for this property. The plot size is intended merely as a guide and has not been officially measured or verified by the Agent. Photographs are for illustration only and may depict items which are not for sale or included in the sale of the property. As part of the service we offer we may recommend ancillary services to you which we believe may help you with your property transaction. We wish to make you aware, that should you decide to use these services we will receive a referral fee. For full and detailed information please visit 'terms and conditions' on our website [www.keithashton.co.uk](http://www.keithashton.co.uk)

Brentwood  
Tel. 01277 260858

Village Office  
Tel. 01277 375757

Lettings Office  
Tel. 01277 202200

Explore more @ [www.keithashton.co.uk](http://www.keithashton.co.uk)

