



£230,000

Stone Bank, Mansfield,

BuckleyBrown
ESTATE AGENTS
FOR SALE
01623 639633 buckleybrown.co.uk

STONE BANK

Welcome to **BuckleyBrown**, where every home is carefully presented, so you can explore with clarity and confidence.

BuckleyBrown
ESTATE AGENTS

"An attractively presented three-bedroom detached home, finished in neutral décor and offered in move-in condition. Well suited to growing families, the property provides balanced accommodation for everyone to enjoy."

- Jasmine, Valuer



READY FOR FAMILY LIFE

Stepping inside, you are welcomed by a well-presented three-bedroom detached home, finished in neutral décor throughout and offering a bright, move-in ready feel.

The accommodation is well balanced and thoughtfully laid out, providing comfortable and practical living space ideal for growing families. With its clean presentation and ready-to-enjoy condition, the property offers a great opportunity to settle in with ease.



THE FINER DETAILS

Stepping inside, this well-presented home offers a practical and spacious layout ideal for modern family living.

The ground floor features a generous living room alongside an impressive open-plan kitchen diner, complete with an external door providing access to the rear garden. A separate utility room adds further convenience, along with a ground floor WC.

To the first floor, there are three well-proportioned bedrooms, including a spacious principal bedroom with its own en-suite shower room. A modern family bathroom serves the remaining bedrooms, all accessed from the landing.

Externally, the front of the property benefits from a private driveway and a single integrated garage, while to the rear is an enclosed garden featuring a neatly maintained lawn and a decked seating area, perfect for outdoor dining and relaxation.





BuckleyBrown
ESTATE AGENTS







LIFE IN MANSFIELD

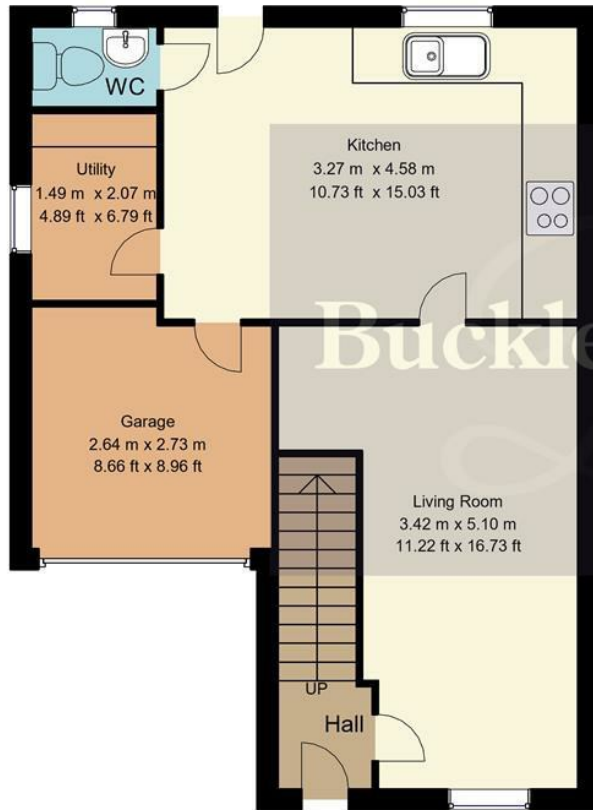
Mansfield is a well-established market town in Nottinghamshire that offers a strong blend of convenience, community, and everyday amenities.

The town centre provides a wide range of shops, cafés, supermarkets, and leisure facilities, while larger retail parks nearby add further choice for shopping and dining. It has a friendly, down-to-earth atmosphere and is popular with families, first-time buyers, and commuters alike thanks to its practical and accessible lifestyle.



Surrounded by attractive countryside and green spaces, Mansfield also offers plenty of opportunities for outdoor activities, including walks and cycling routes. The nearby Sherwood Forest is a major local highlight, offering miles of woodland and history to explore. Excellent transport links, including access to the A38 and M1, make travel to nearby cities such as Nottingham and Sheffield straightforward, adding to its appeal as a well-connected place to live.

Ground Floor
48sq.m/508.55sq.ft
Approx



First Floor
48sq.m/508.55sq.ft
Approx



Whilst every attempt has been made to ensure the accuracy of the floor plan contained here, no responsibility is taken for incorrect measurements of doors, windows, appliances and room or any error, omission or misstatement. Exterior and interior walls are drawn to scale based on interior measurements. Any figure given is for initial guidance only and should not be relied on as basis of valuation. These plans are for marketing purposes only and should be used as such by any prospective purchase. Specially no guarantee is should not be relied on as a basis of valuation. These plans are for marketing purposes only and should be used as such by any prospective purchase. Specifically no guarantee is given on the total square footage of the property if quoted on this plan.

Key Features

Well presented throughout

Open plan kitchen/dining room

Separate utility room and ground floor wc

Master bedroom with an en suite

Private driveway and single integrated garage

Enclosed rear garden to enjoy all year round

Energy Performance Certificate (EPC)

Rating C

Council Tax Band C

Size Approximately 1016 sq.ft

BuckleyBrown
ESTATE AGENTS



These particulars are intended as a guide only and do not form part of any offer or contract. All descriptions, measurements, images and plans are provided for illustration purposes and should not be relied upon as statements of fact. Prospective purchasers should satisfy themselves as to the accuracy of the information. Buckley Brown Estate Agents accept no liability for any loss arising from reliance on these details.

© Buckley Brown Estate Agents 2026. All rights reserved.

Exceptional homes deserve
exceptional representation.

Let's Chat.

01623 633633

mansfield@buckleybrown.co.uk

buckleybrown.co.uk

BuckleyBrown
ESTATE AGENTS