



Woodhouse Close, UB6

£1,195,000

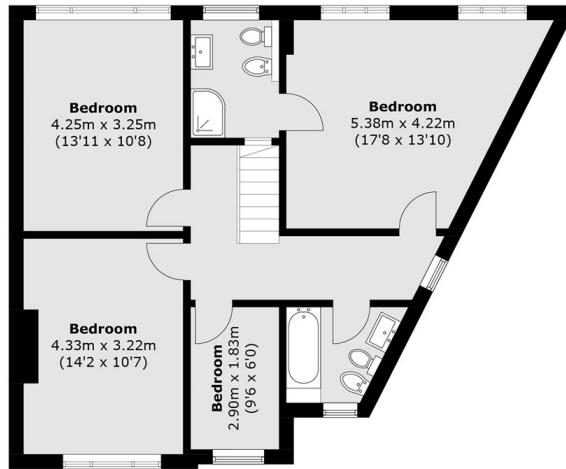
A unique 1930s family home, substantially enhanced by a double-storey side extension to create a spacious four-bedroom, two-bathroom residence with three reception rooms. Occupying a generous corner plot, the property benefits from an expansive garden, twin garages, ample off-street parking, and excellent scope for further extension, subject to the necessary planning consents.

Located in a secluded cul-de-sac within the popular residential Medway housing area. There are well regarded local schools, multiple green spaces and sports grounds, along with Perivale station on the Central Line, which is approximately half a mile walk away.

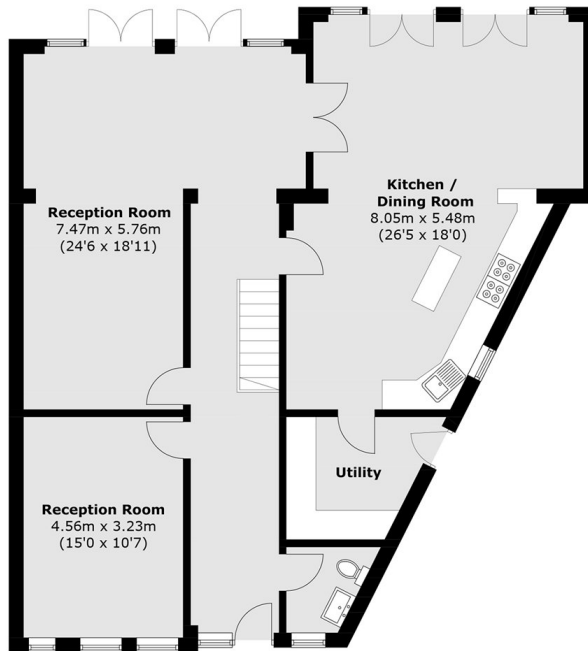
Features

- Four Bedrooms
- Three Reception Rooms
- Twin Garages
- Off Street Parking
- No Onward Chain
- Large Garden

Woodhouse Close, Greenford, UB6



First Floor



Ground Floor

Total area (approx.): 189.4 sq. m (2,038.7 sq. ft)