



Wisley Way, Birmingham B32 2JX

welcome to

Wisley Way, Birmingham

*** NO ONWARD CHAIN *** RECENTLY REFURBISHED *** TURN KEY CONDITION *** CLOSE TO LOCAL AMENITIES *** FULLY FITTED KITCHEN ***
FOUR GENEROUS BEDROOMS *** FAMILY BATHROOM *** DOWNSTAIRS WC *** FRONT AND REAR GARDENS ***

Agent Note

This property is council tax band B.

Entrance Hall

Radiator.

Downstairs W/C

Wall mounted wash hand basin with hot & cold taps, low level flush w/c.

Lounge

14' x 13' (4.27m x 3.96m)

Double glazed window to front, radiator.

Kitchen

14' x 11' (4.27m x 3.35m)

Double glazed window & door to rear, radiator, tiled splash-back, integrated oven, induction hob, extractor hood, stainless steel sink & drainer, range of wall & base units with worktops over.

Landing

Loft access, storage cupboard - Worcester Bosch boiler.

Bedroom 1

12' x 11' (3.66m x 3.35m)

Double glazed window to front, radiator.

Bedroom 2

12' x 9' (3.66m x 2.74m)

Double glazed window to front, radiator, built in storage.

Bedroom 3

10' x 7' (3.05m x 2.13m)

Double glazed window to rear, radiator.

Bedroom 4

10' x 9' (3.05m x 2.74m)

Double glazed window to rear, radiator.

Bathroom

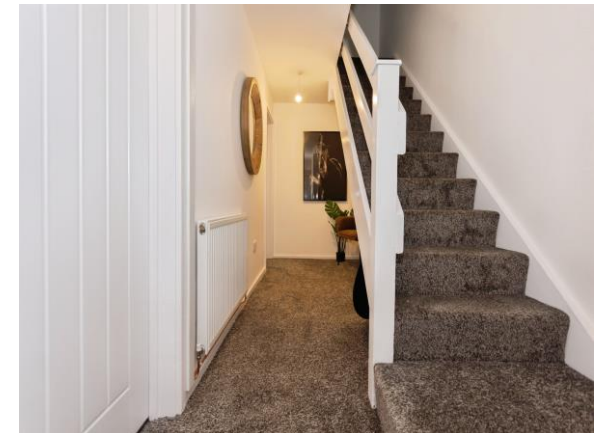
Double glazed frosted window to rear, heated towel rail, tiled to splash-prone areas, low level flush w/c, wash hand basin with mixer tap, bath with shower over.

Front Garden

Enclosed, blank canvas.

Rear Garden

Fully enclosed, new fencing, blank canvas.





view this property online shipways.co.uk/Property/HBN111995



welcome to

Wisley Way, Birmingham

- No onward chain
- Recently refurbished to an immaculate standard
- Turn key condition
- Close to local amenities
- Fully fitted kitchen

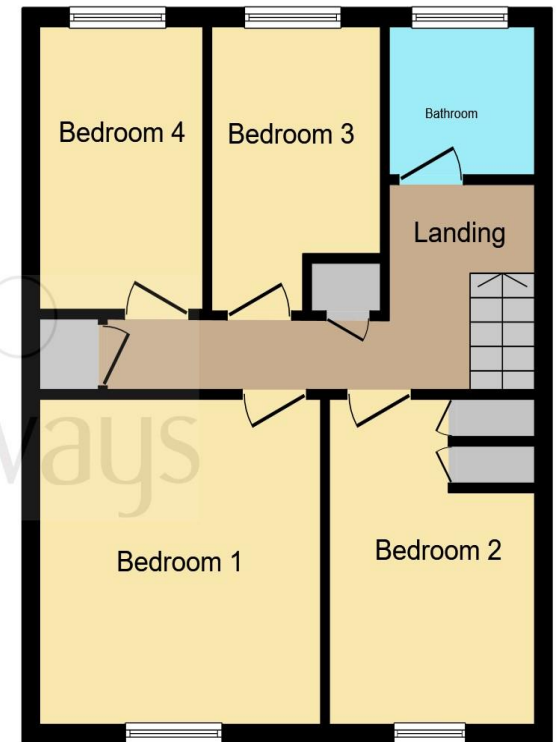
Tenure: Freehold EPC Rating: C
Council Tax Band: B

fixed price

£245,000



Ground Floor



First Floor

This floor plan is for illustrative purposes only. It is not drawn to scale. Any measurements, floor areas (including any total floor area), openings and orientation are approximate. No details are guaranteed, they cannot be relied upon for any purpose and they do not form part of any agreement. No liability is taken for any error, omission or misstatement. A party must rely upon its own inspection(s). Powered by www.focalagent.com

view this property online shipways.co.uk/Property/HBN111995



Property Ref:
HBN111995 - 0009

1. MONEY LAUNDERING REGULATIONS Intending purchasers will be asked to produce identification documentation at a later stage and we would ask for your co-operation in order that there is no delay in agreeing the sale. 2. These particulars do not constitute part or all of an offer or contract. 3. The measurements indicated are supplied for guidance only and as such must be considered incorrect. Potential buyers are advised to recheck measurements before committing to any expense. 4. We have not tested any apparatus, equipment, fixtures or services and it is in the buyers interest to check the working condition of any appliances. 5. Where an EPC, or a Home Report (Scotland only) is held for this property, it is available for inspection at the branch by appointment. If you require a printed version of a Home Report, you will need to pay a reasonable production charge reflecting printing and other costs. 6. We are not able to offer an opinion either written or verbal on the content of these reports and this must be obtained from your legal representative. 7. Whilst we take care in preparing these reports, a buyer should ensure that his/her legal representative confirms as soon as possible all matters relating to title including the extent and boundaries of the property and other important matters before exchange of contracts.

Shipways is a trading name of Sequence (UK) Limited which is registered in England and Wales under company number 4268443, Registered Office is Cumbria House, 16-20 Hockliffe Street, Leighton Buzzard, Bedfordshire, LU7 1GN. VAT Registration Number is 500 2481 05.



0121 427 3264



harborne@shipways.co.uk



172 High Street, Harborne, BIRMINGHAM,
West Midlands, B17 9PP



shipways.co.uk