



Birkett Hill | Threlkeld | Keswick | CA12 4SZ

Price Guide £650,000



david britton
ESTATES



Key Features

- Detached bungalow
- Three bedrooms
- Three reception rooms
- Two bathrooms
- Double garage
- Gardens
- Stand alone position
- Lake District National Park
- Amazing views

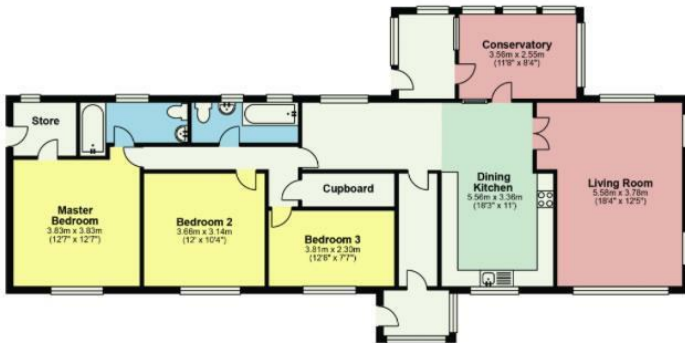
Summary

Beautiful three bedroomed detached bungalow set in one of the most stunning locations, with elevated views over the Lakeland fells, Threlkeld, Lake District National Park.





Floor plans

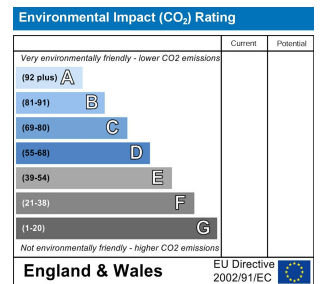
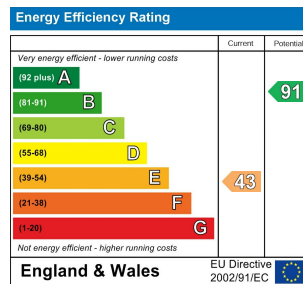


Total area: approx. 125.5 sq. metres (1350.4 sq. feet)
 For illustrative purposes only. Not to scale. RGP

COUNCIL TAX BAND - E

DISCLAIMER

These particulars, whilst believed to be accurate are set out as a general guideline and do not constitute any part of an offer or contract. Intending Purchasers should not rely on them as statements of representation of fact but must satisfy themselves by inspection or otherwise as to their accuracy. The services, systems, and appliances shown may not have been tested and has no guarantee as to their operability or efficiency can be given. All floor plans are created as a guide to the lay out of the property and should not be considered as a true depiction of any property and constitutes no part of a legal contract.



Unit 3 Mason Court Gillan Way, Penrith 40 Business Park
 Penrith
 Cumbria
 CA11 9GR
 01768881111
 Sales@brittonestates.co.uk
 www.brittonestates.co.uk