



Icona Point, 58 Warton Road, E15 2JD
£1,850 Per Month

coop
ers
OF LONDON EST. 1986

Icona Point, 58 Warton Road, E15

- Available 18th August
- Furnished
- Balcony
- Concierge
- Residents Gym
- Excellent Transport Links

Bright, modern, one bedroom flat in a popular new Stratford development overlooking the Olympic Village. Tastefully furnished to a high spec, the flat offers fully integrated kitchen and good sized reception with stunning dual aspect views.

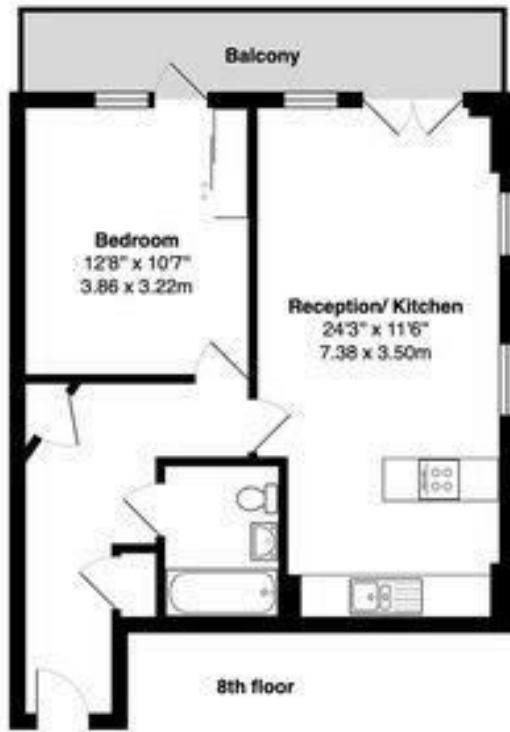
Pudding Mill Lane (DLR) and Stratford (central and main lines) stations are nearby.

Bright, modern, one bedroom flat in a popular new Stratford development overlooking the Olympic Village. Tastefully furnished to a high spec, the flat offers fully integrated kitchen and good sized reception with stunning dual aspect views.

Pudding Mill Lane (DLR) and Stratford (central and main lines) stations are nearby.







Icona Point , Warton Road, E15

Total Gross Area: 564 ft² ... 52.4 m² (excluding balcony)

All measurements are approximate and for identification guideline purposes only, not to scale.
Compliant with the RICS code of measuring practice

Energy Efficiency Rating		Current	Potential
Very energy efficient - lower running costs			
(92 plus) A			86
(81-91) B			
(69-80) C		75	
(55-68) D			
(39-54) E			
(21-38) F			
(1-20) G			
Not energy efficient - higher running costs			
England & Wales		EU Directive 2002/91/EC	

Environmental Impact (CO ₂) Rating		Current	Potential
Very environmentally friendly - lower CO ₂ emissions			
(92 plus) A			
(81-91) B			
(69-80) C			
(55-68) D			
(39-54) E			
(21-38) F			
(1-20) G			
Not environmentally friendly - higher CO ₂ emissions			
England & Wales		EU Directive 2002/91/EC	

Viewing

Strictly by appointment with:
Coopers of London , 22 Cleveland Street,
Fitzrovia, London W1T 4JB
info@coopersoflondon.co.uk

0207 580 9658

These particulars, whilst believed to be accurate are set out as a general outline only for guidance and do not constitute any part of an offer or contract. Intending purchasers should not rely on them as statements or representation of fact, but must satisfy themselves by inspection or otherwise as to their accuracy. No person in this firm's employment has the authority to make or give any representation or warranty in respect of the property.