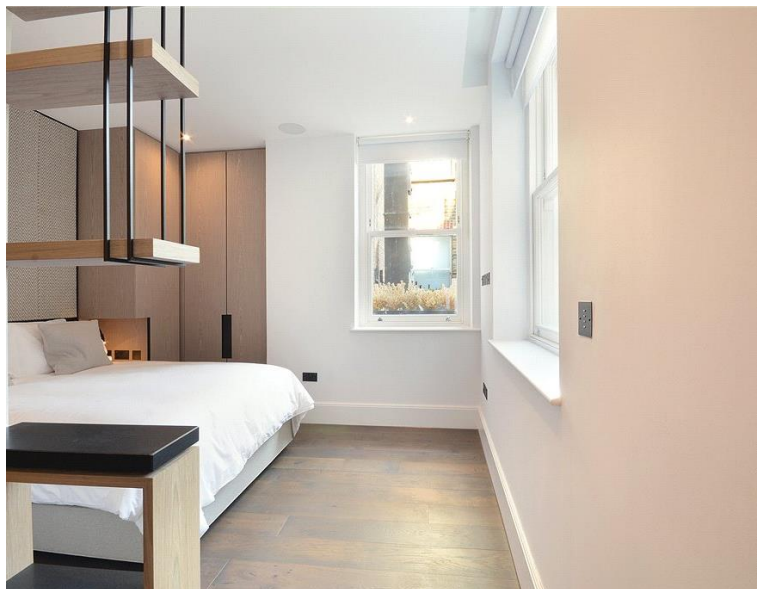
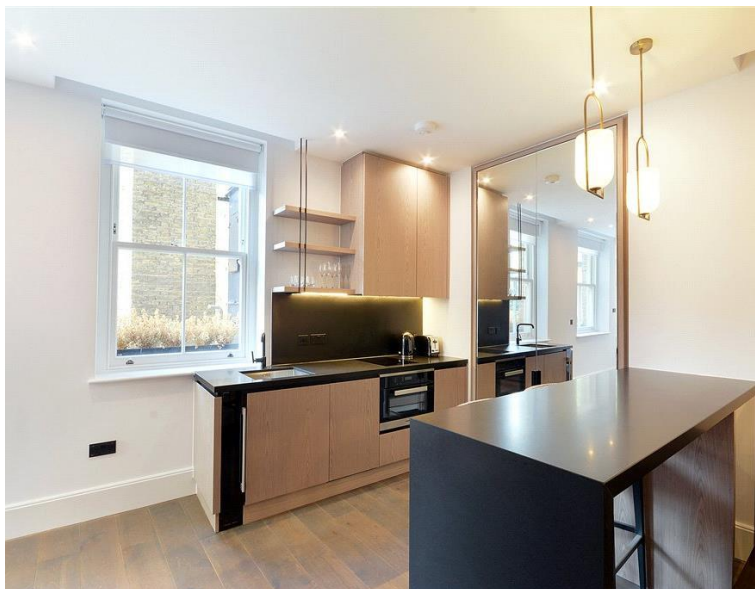




# Cresswell Gardens, London SW5

Price £635 per week - Furnished







## Description

A beautifully presented first floor apartment, interior designed throughout by TH2 Designs. Accommodation comprises reception room and bedroom area, one shower room and open plan kitchen, fully fitted with Miele and Neff appliances. The apartment also benefits from comfort cooling and heating in the reception room and underfloor heating to shower room and hallway.

One Brompton is a stunning new development benefitting from a full concierge service, a lift to all floors, CCTV security system and audio visual entry system. The Old Brompton Road is ideally situated for the fashionable shops and restaurants of both Knightsbridge and Chelsea, as well as transport links across central London.

Council tax band: E. Rent is payable on a monthly basis, and you may be required to pay more than a month's rent in advance for tenancies with annual rents exceeding £100,000. You will be required to pay a 1 week holding deposit following a successful offer. Tenancies with annual rents up to £50,000 will require a 5 weeks' security deposit, while those exceeding this threshold will require a 6 weeks' deposit. Utility bills, council tax, telephone line and broadband are not included in the rent. As well as paying the rent, you may also be required to make some additional permitted payments. If your tenancy does not qualify as an APT, additional fees may apply. Please visit [jll.co.uk/fees](http://jll.co.uk/fees) for details of fees that may be payable when renting a property. To check broadband and mobile phone coverage please visit [ofcom.org.uk/phones-telecoms-and-internet/advice-for-consumers/advice/ofcom-checker](http://ofcom.org.uk/phones-telecoms-and-internet/advice-for-consumers/advice/ofcom-checker)

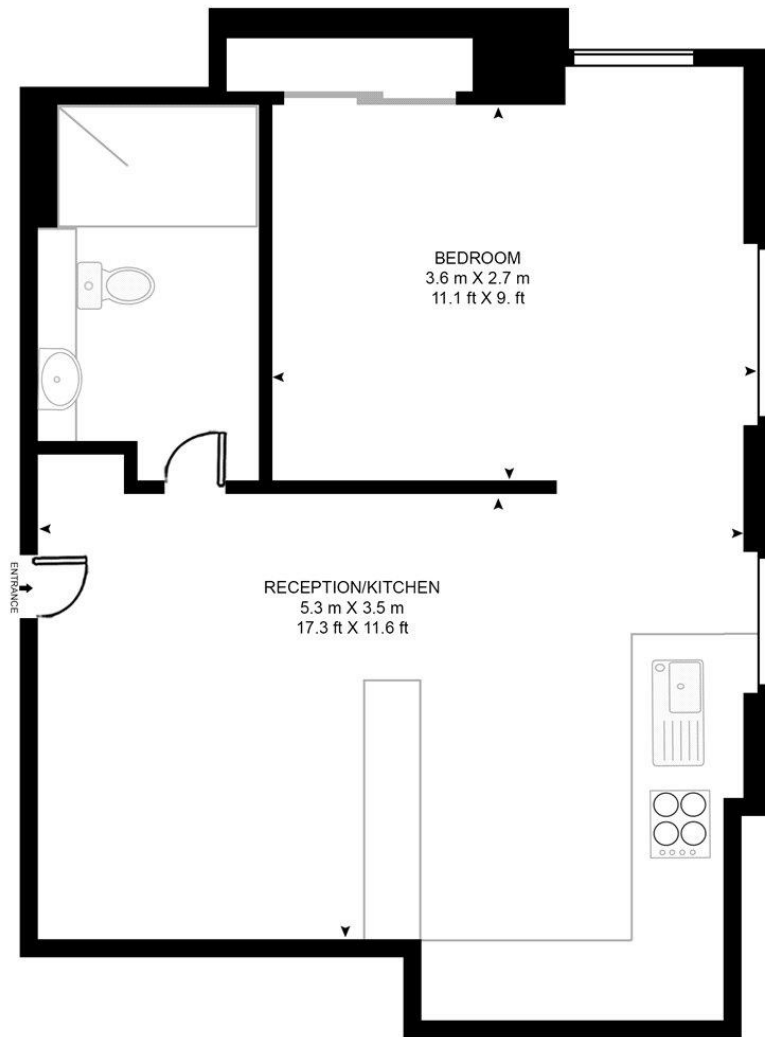
- Reception room/bedroom area
- Open plan kitchen
- Separate shower room
- First floor
- Lift
- Day concierge service
- Interior designed throughout by TH2 Designs
- Furnished
- Approx. 387 sq ft (35 sq m)
- EPC: C

# Floorplan

387 sq ft | 36 sq m

## CRESSWELL GARDENS

APPROXIMATE GROSS INTERNAL FLOOR AREA 387 SQ.FT (35.9 SQ.M)



FIRST FLOOR

**HDVA**

This floor plan has been defined by the RICS Code of Measurement. This floor plan and all others are for approximate representative purposes only and upon usage is agreed to as such by the client.

WWW: [hdvirtualart.com](http://hdvirtualart.com) | TEL: 0203.974.1567 | EMAIL: [info@hdvirtualart.com](mailto:info@hdvirtualart.com)

Chelsea  
2 Cale Street,  
London SW3 3QU  
+4420 7399 5010  
[saleschelsea@jll.com](mailto:saleschelsea@jll.com)

*Urban living, your way.*

[jll.co.uk/residential](http://jll.co.uk/residential)

© 2019 Jones Lang LaSalle IP, Inc. All rights reserved. All information contained herein is from sources deemed reliable; however, no representation or warranty is made to the accuracy thereof.

