

ST MARKS ROAD, W11





St Marks Road, W11

A bright and spacious maisonette of approximately 1,200 sq ft which occupies the three upper floors of a modern building in Notting Hill. The property benefits from its own private entrance at street level and provides a large reception room with wooden floors and a separate fitted kitchen. There are three double bedrooms and two bathrooms, one en-suite, along with small Juliette balcony. St Marks Road is a short walk away from the bustle of Portobello Road, Kensington Park Road and Golborne Road with their outstanding array of shops, cafes, boutiques and restaurants. Ladbroke Grove underground station is close by. Please note: Some imagery has been virtually staged.

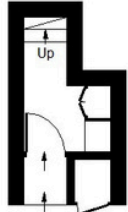




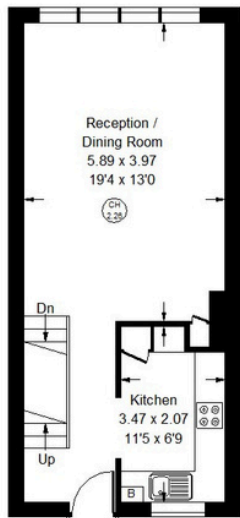
Approx. Gross Internal Area
 = 103.5 sq m / 1114 sq ft
 Eaves Storage = 11.8 sq m / 127 sq ft
 Eaves Storage = 115.4 sq m / 1241 sq ft



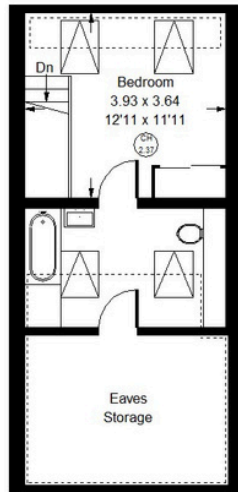
--- = Reduced headroom
 below 1.5 m / 5'0"



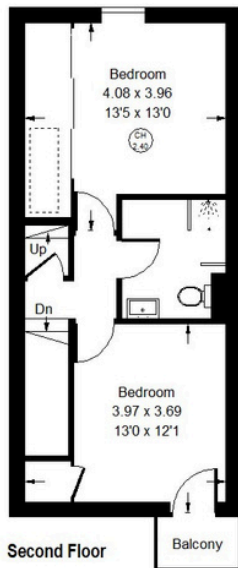
Ground Floor



First Floor



Third Floor



Second Floor



St Marks Road, W11 - Share of Freehold Local Authority - Royal Borough of Kensington & Chelsea

- Three bedrooms
- Two bathrooms
- Balcony
- Maisonette
- EPC Rating: C
- Council Tax Band: B



Whilst every attempt has been made to ensure the accuracy of the floor plan, measurements are approximate and not to scale. No guarantee is given on the total square footage of the property quoted on the plan. Figures given are for guidance. Plan is for illustration purposes only, not to be used for valuations.