



Cedar Court, Crockford Park Road, Addlestone, KT15 2LQ



This well-presented first-floor one-bedroom retirement apartment, offered with no onward chain, is located in the highly sought-after Cedar Court development. Just a short walk from Addlestone town centre, this property boasts a peaceful position with lovely views to the front of the development.

The apartment has been recently redecorated, ensuring a fresh and inviting atmosphere. It features a spacious living room, a well-equipped kitchen, a modern shower room, and a bright, dual-aspect bedroom with a built-in wardrobe. For added peace of mind, all rooms are fitted with alarm pull cords. Access to the first floor is available via both lift and stairs.

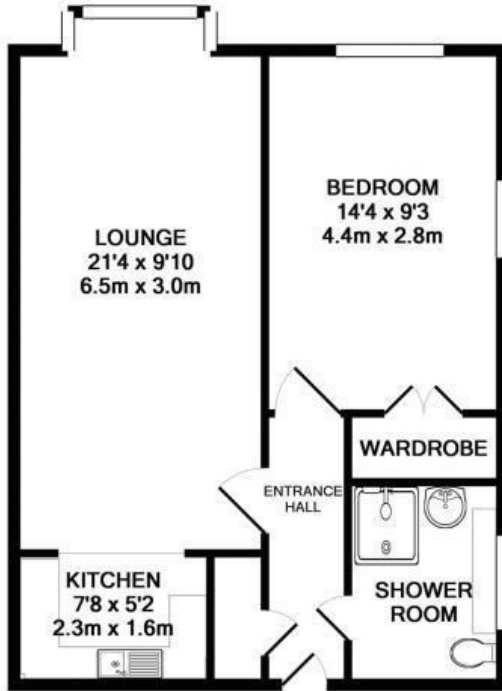


Cedar Court offers an array of excellent facilities for residents, including a welcoming residents' lounge, an on-site manager, attractive communal gardens, a laundry room, and a guest suite for visitors. Please note that all residents must be aged 60 or over.

With its convenient location, thoughtful design, and community atmosphere, this retirement apartment is an ideal choice for those seeking independent living with added support and comfort.



Leasehold



TOTAL APPROX. FLOOR AREA 485 SQ.FT. (45.0 SQ.M.)

Whilst every attempt has been made to ensure the accuracy of the floor plan contained here, measurements of doors, windows, rooms and any other items are approximate and no responsibility is taken for any error, omission, or mis-statement. This plan is for illustrative purposes only and should be used as such by any prospective purchaser. The services, systems and appliances shown have not been tested and no guarantee as to their operability or efficiency can be given

Made with Metropix ©2018

EPC Rating: 82 B





Grants Homes 60 Church Street, Weybridge, Surrey, KT13 8DL
T: 01932 858885 E: addestone@grantshomes.co.uk