

Frank Harris & Co.



Bloomsbury, WC1N

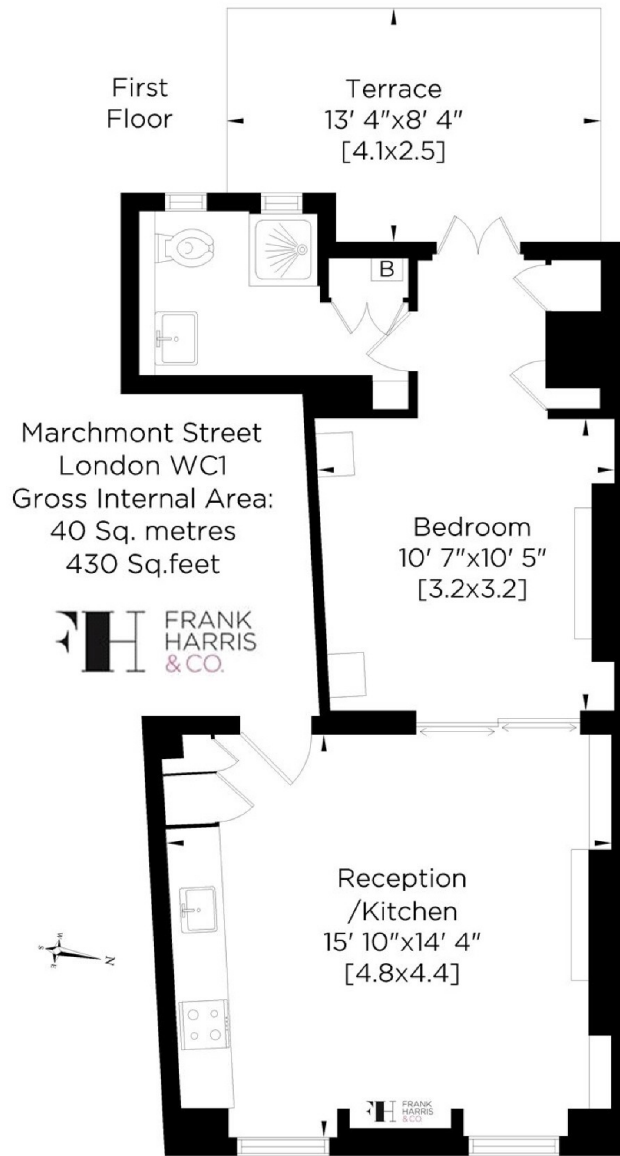
£2,700 pcm

A stylish and modern one double bedroom apartment on the first floor of this well maintained Period Conversion. Finished to a high standard throughout with wood floorings and a balcony,

Located near the junction of Tavistock Place, Marchmont Street is just a few yards from the Brunswick Centre, Russell Square and St Pancras International stations.

- One Bedroom • Wood Floors • Modern spec •
- Eat-In Kitchen • Period Conversion • Balcony •

Frank Harris & Co.



Whilst every attempt has been made to ensure the accuracy of this floor plan, measurements of doors, windows, rooms and Sq.footage are approximate within 5% accuracy. For identification purposes only. Walls with small angles drawn straight. Not to be used as part of the decision to buy. You must recheck all details before purchase and only purchase when you have confirmed them. Price on application for a 90 day licence to use this plan. No appliances tested. Not to scale. © www.steelelondon - Email: patricia@steelelondon - Tel: 07847 219401

Frank Harris & Co. Bloomsbury and Kings Cross
81 Marchmont Street,
London, WC1N 1AL
020 7387 0077
bloomsburylettings@frankharris.co.uk

Energy Rating: C. We aim to make our particulars both accurate and reliable. However they are not guaranteed; nor do they form part of an offer or contract. If you require clarification on any points then please contact us, especially if you're traveling some distance to view. Please note that appliances and heating systems have not been tested and therefore no warranties can be given as to their good working order.

