



**Apartment**

**Beds 2, Baths 2, Lounges 1**

**Prince Regent Road, Hounslow, TW3**

**£315,000 Leasehold**





## Property Description

**Modern Two Bedroom Apartment in Central Hounslow with Private Balcony** - A well-presented two bedroom, two bathroom apartment with no onward chain set within The Blenheim Centre, moments from Hounslow's main transport links and town centre amenities. Offering in excess of 700 sq ft of practical living space with lift access, concierge and private balcony.

### Property Description

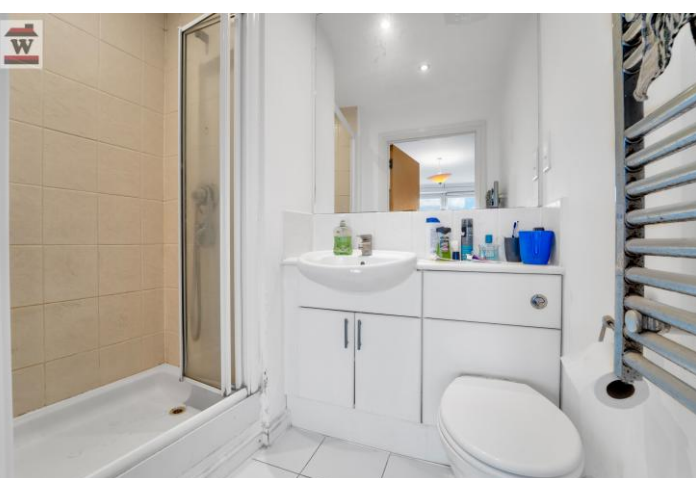
Positioned within The Blenheim Centre, this modern two bedroom apartment offers an excellent opportunity to live in the heart of Hounslow. The development provides immediate access to extensive everyday amenities including a large Asda supermarket and a 24-hour gym within the complex.

Located on the fifth floor, the apartment is reached via secure communal areas served by lift access. The entrance hall leads into a spacious open plan kitchen and living/dining area, providing a comfortable and practical layout suited to modern living. From the lounge, doors open directly onto a private balcony, offering an appealing outdoor extension of the living space.



The property includes two well-proportioned bedrooms, with the main bedroom benefiting from an en-suite shower room. A further family bathroom serves the second bedroom and guests. The apartment is presented in good condition throughout, with a neutral and contemporary finish.

Externally, the private balcony provides valuable outdoor space, ideal for fresh air and relaxation. While the apartment does not include dedicated parking, the development itself offers strong convenience benefits such as on-site facilities,



including the Asda superstore and a 24-hour gym operated by The Gym Group.

This location will appeal to buyers seeking a practical, low-maintenance home in a lively town centre setting, with excellent connectivity and amenities on the doorstep. It would also be an excellent addition to a buy to let portfolio.

#### **Transport, Local & Schools**

The property is within walking distance of Hounslow East and Hounslow Central Underground stations on the Piccadilly Line, both located a short walk from The Blenheim Centre. The area is also well served by multiple bus routes running from the immediate vicinity of the development.

Being positioned directly within Hounslow Town Centre, residents enjoy excellent access to extensive shopping options including the Asda superstore at The Blenheim Centre and various retail outlets along the High Street. A 24-hour gym is located within the development, offering added convenience. Local green spaces such as Inwood Park are also within easy reach.

Nearby schools include Hounslow Town Primary, Alexandra Primary, Kingsley Academy, and Lampton School, all serving the local catchment.

#### **Additional Information**

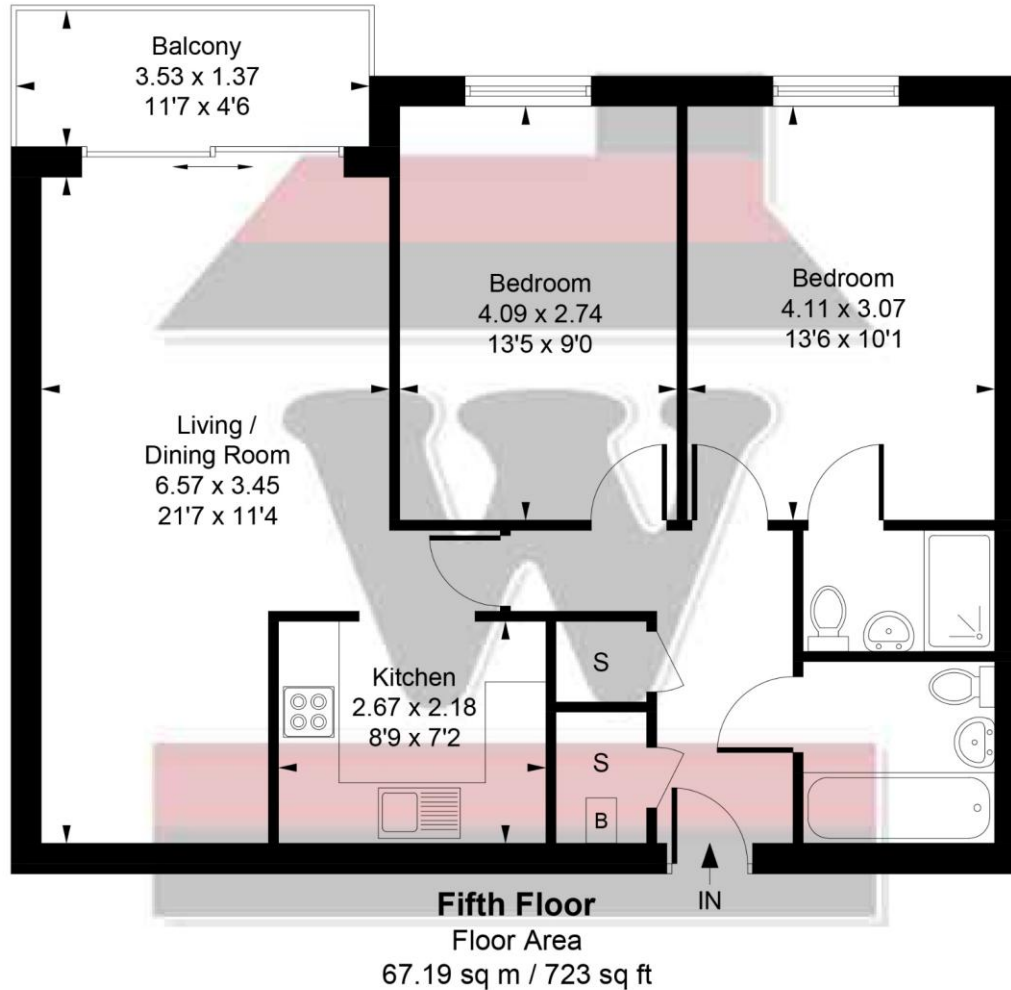
Tenure: Leasehold (106 years remaining)

Size: 723 sq ft

EPC Rating: C

Council Tax: Band D

# The Blenheim Center



Total Approximate Gross Internal Area = 67.19 sq m / 723 sq ft

Whilst every attempt has been made to ensure the accuracy of the floor plan contained here, measurements of doors, windows, rooms and any other items are approximate and no responsibility is taken for any error, omission, or mis-statement. This plan is for illustrative purposes only and should be used as such by any prospective purchase.



Woodlands Estates,  
16 St Johns Road, Isleworth,  
Middlesex, TW7 6NW

www.woodlandsestates.com  
020 8560 3228  
mail@woodlandsestates.com

Agents Note: Whilst every care has been taken to prepare these sales particulars, they are for guidance purposes only. All measurements are approximate and for general guidance purposes only and whilst every care has been taken to ensure their accuracy, they should not be relied upon and potential buyers are advised to recheck the measurements.

Follow us on Social Media

