



Mario Carrozzo **exp**

0203 727 5889
mario.carrozzo@exp.uk.com

Swissland Hill, Dormans Park, East Grinstead

Guide Price £2,000,000

🛏 6 🚿 6 🛋 3

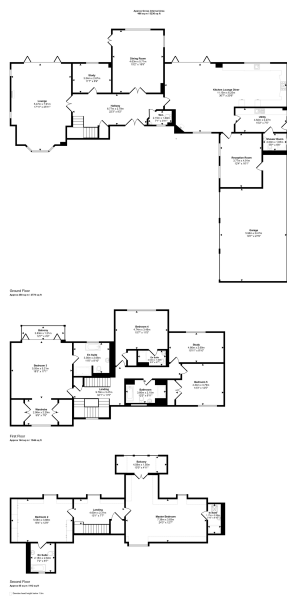


- Rare & Prestigious detached home on a private road in Dormans Park
- Six large bedrooms and approximately 5236 sqft of liveable space
- Discreate second chef's kitchen
- Triple garage with a sweeping driveway, providing and an impressive approach
- Expansive, landscaped gardens offering privacy and far-reaching
- Guide price £2,000,000–£2,250,000 below RICS valuation at £2,250,000
- Four reception areas including a substantial open-plan kitchen living space
- Set within approximately 1.27 acres of private landscaped grounds
- Striking cast iron log burner forming a central feature within the living room
- REFERENCE CODE - MC1212



Priced below its recent RICS valuation, this substantial detached home offers a rare opportunity to acquire a prime Dormans Park residence at a genuine discount to market value. Set on a prestigious private road, the property provides **six huge bedrooms** and approximately **5236 sq ft of well-proportioned accommodation**, including four reception areas, a large open-plan kitchen, living and dining space, and a discreet hidden second chef's kitchen. Positioned within **1.27 acres of private grounds**, the home further benefits from an extensive driveway and **triple garage**. Guide price £2,000,000–£2,250,000 with a RICS valuation of £2,250,000.

Please use Reference Code when enquiring on property - **MC1212**



Score	Energy rating	Current	Potential
92+	A		
81-91	B		84 B
69-80	C	79 C	
55-68	D		
39-54	E		
21-38	F		
1-20	G		

mariocarrozzo.exp.uk.com