



LANCASTER GATE

Hyde Park W2



BEAUTIFUL FRESHLY RENOVATED TWO BEDROOM APARTMENT

For sale a beautiful two bedroom apartment in Hyde Park W2, situated on the third floor (with lift) of a Grade II listed white stucco fronted building, located moments from the green, open spaces of Hyde Park and Kensington Gardens.

			EPC
2	2	1	C
		Grade II listed	

Local Authority: City of Westminster

Council Tax band: G

Tenure: Leasehold: Approximately 959 years remaining

Service charge: £6,666.96 per annum, reviewed every year, next review due 2027

Guide Price: £1,750,000



LATERAL THIRD FLOOR APARTMENT WITH SPACIOUS TERRACE

A charming 83 sq. m. (904 sq. ft.) apartment located on the third floor of a beautiful white stucco, Grade II listed building with lift, in one of London's most prestigious addresses.

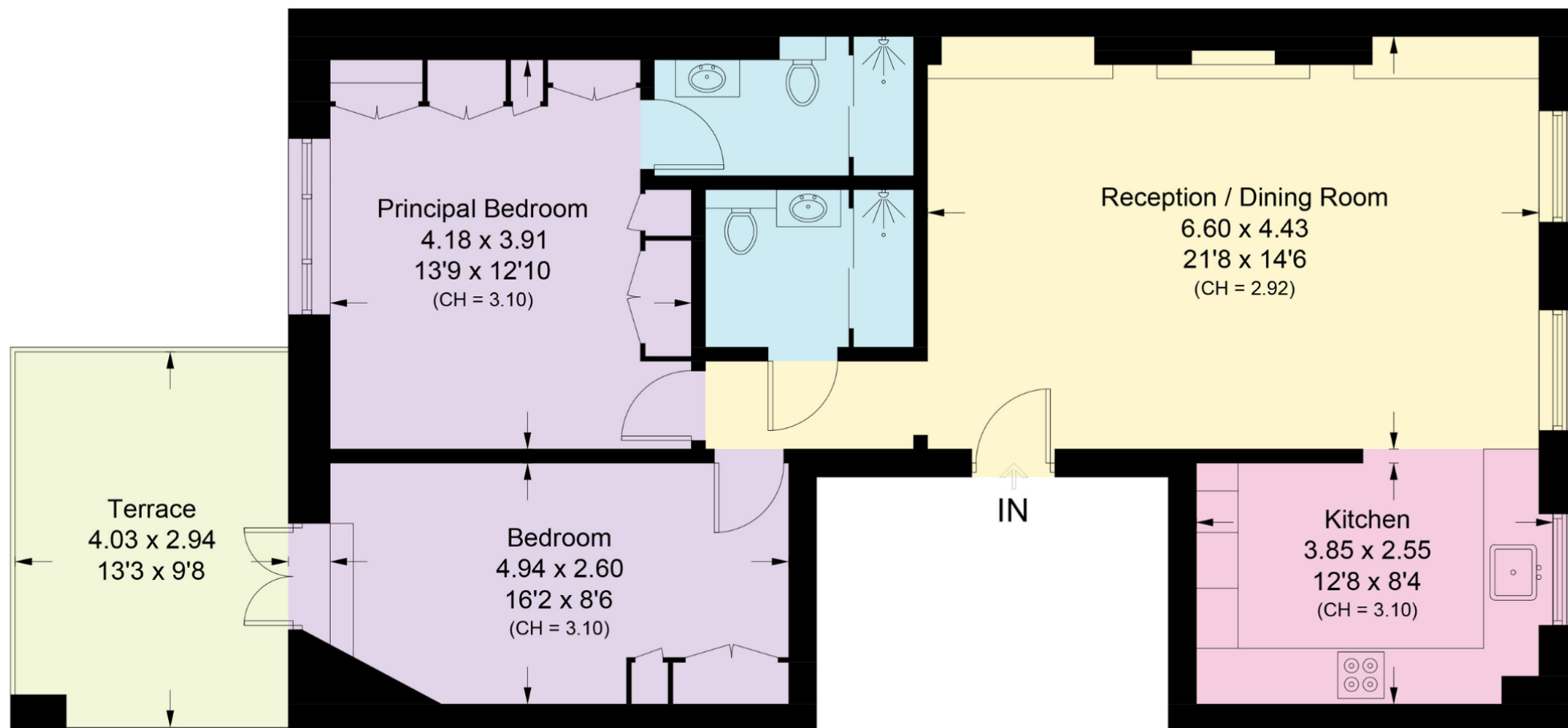
The bright reception room has a working fireplace in Portland Stone and stunning views over the garden square and church, leading into a well equipped kitchen with high end appliances and ample work space. The principal bedroom offers built in wardrobes and en-suite shower room. There is a second bedroom and guest bathroom with under floor heating. This property offers a rare opportunity to enjoy some private outdoor space with a spacious roof terrace.

Lancaster Gate is situated on the doorstep of Hyde Park, London's finest park and many transport links, including Lancaster Gate Station (Central Line) and Paddington Stations (Heathrow Express, Network Rail, London Underground, Elizabeth line). The nearby areas of Mayfair, Knightsbridge and Kensington provide a varied selection of the best restaurants, bars, shops and salons London offers. The Royal Albert Hall and the Serpentine Gallery are also within walking distance.









Third Floor

Approximate Gross Area = 84 sq m / 904 sq ft

This plan is for layout guidance only. Not drawn to scale unless stated. Windows and door openings are approximate. Whilst every care is taken in the preparation of this plan, please check all dimensions, shapes and compass bearings before making any decisions reliant upon them. (ID767266)

We would be delighted
to tell you more.

Mark Ruffell
+44 20 3697 8234
mark.ruffell@knightfrank.com

Knight Frank Hyde Park
1 Craven Terrace
W2 3QD

knightfrank.co.uk

Your partners in property

1. Particulars: These particulars are not an offer or contract, nor part of one. You should not rely on statements given by Knight Frank in the particulars, by word of mouth or in writing ("information") as being factually accurate about the property, its condition or its value. Neither Knight Frank nor any joint agent has any authority to make any representations about the property, and accordingly any information given is entirely without responsibility on the part of Knight Frank. 2. Material Information: Please note that the material information is provided to Knight Frank by third parties and is provided here as a guide only. While Knight Frank has taken steps to verify this information, we advise you to confirm the details of any such material information prior to any offer being submitted. If we are informed of changes to this information by the seller or another third party, we will use reasonable endeavours to update this as soon as practical. 3. Photos, Videos etc: The photographs, property videos and virtual viewings etc. show only certain parts of the property as they appeared at the time they were taken. Areas, measurements and distances given are approximate only. 4. Regulations etc: Any reference to alterations to, or use of, any part of the property does not mean that any necessary planning, building regulations or other consent has been obtained. A buyer must find out by inspection or in other ways that these matters have been properly dealt with and that all information is correct. 5. Fixtures and fittings: A list of the fitted carpets, curtains, light fittings and other items fixed to the property which are included in the sale (or may be available by separate negotiation) will be provided by the Seller's Solicitors. 6. VAT: The VAT position relating to the property may change without notice. 7. To find out how we process Personal Data, please refer to our Group Privacy Statement and other notices at <https://www.knightfrank.com/legals/privacy-statement>.

Particulars dated May 2024. Photographs and videos dated May 2024. All information is correct at the time of going to print. Knight Frank is the trading name of Knight Frank LLP. Knight Frank LLP is a limited liability partnership registered in England and Wales with registered number OC305934. Our registered office is at 55 Baker Street, London W1U 8AN. We use the term 'partner' to refer to a member of Knight Frank LLP, or an employee or consultant. A list of members names of Knight Frank LLP may be inspected at our registered office. If you do not want us to contact you further about our services then please contact us by either calling 020 3544 0692, email to marketing.help@knightfrank.com or post to our UK Residential Marketing Manager at our registered office (above) providing your name and address.