



HARDINGS

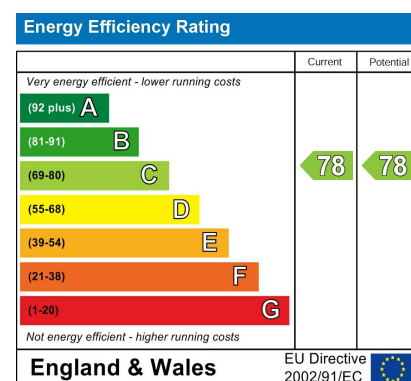


Dawn Redwood Close
£1,500 Per Month





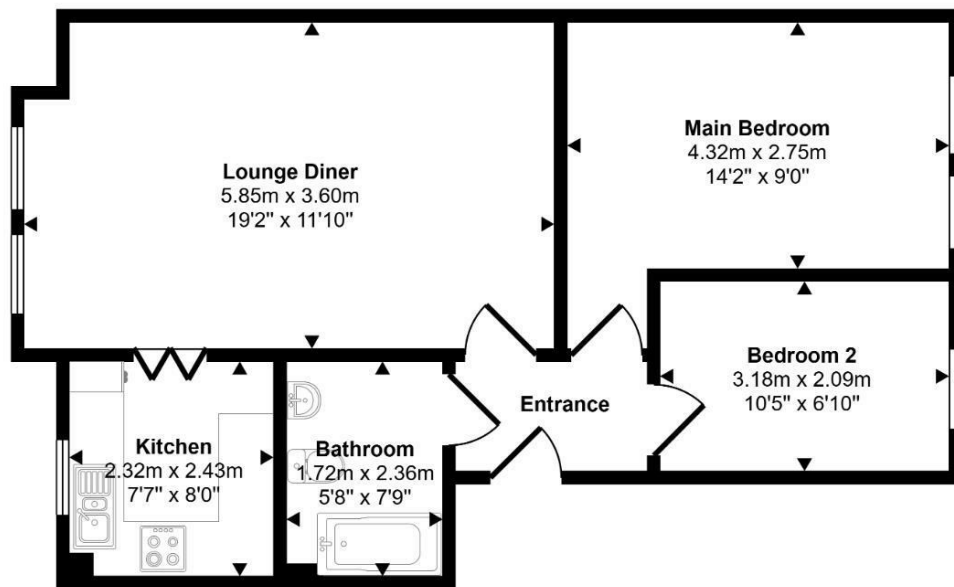
A refurbished two bedroom first floor apartment situated in popular Horton. Ideal for staff at Heathrow Terminal 5. This property comprises entrance hall, two bedrooms, bathroom and living room/kitchen. Allocated parking for one car. Unfurnished. Council Tax Band C. EPC:C.



Features

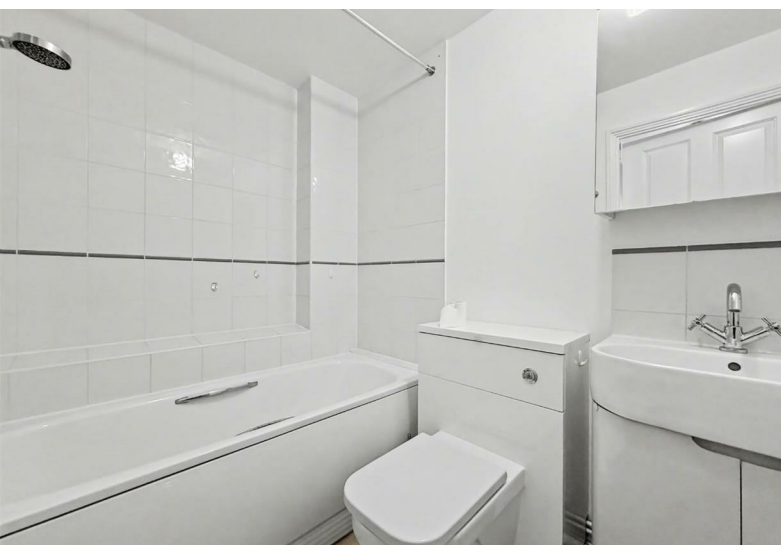
- Two Bedrooms
- One allocated parking space
- Council Tax Band C
- Refurbished
- Unfurnished
- EPC:C

Approx Gross Internal Area
55 sq m / 595 sq ft



Floorplan

This floorplan is only for illustrative purposes and is not to scale. Measurements of rooms, doors, windows, and any items are approximate and no responsibility is taken for any error, omission or mis-statement. Icons of items such as bathroom suites are representations only and may not look like the real items. Made with Made Snappy 360.



11 High Street, Windsor, Berkshire, SL4 1LD,
T: 01753 833 118 | E: info@hardings.co.uk
www.hardings.co.uk

