



55 Ethel Street  
Northampton, NN1 5ER



Derran Dooley

Partnered With

**Simpsons**  
Property Experts



A beautifully presented three-bedroom mid-terraced home available to rent in the sought-after area of Abington, NN1. Finished to an excellent standard throughout, this property offers spacious and versatile accommodation ideal for families.

The ground floor features a large open-plan lounge/diner, flooded with natural light and benefitting from French doors that open directly onto a low-maintenance courtyard rear garden—perfect for entertaining or relaxing. To the rear of the home is a refitted modern kitchen along with a stylish family bathroom. The property also benefits from a usable cellar, providing convenient additional storage space.

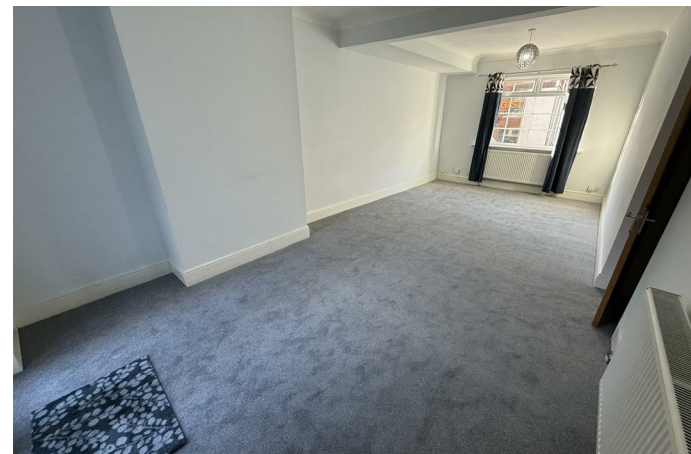
To the first floor are three well-proportioned double bedrooms, all presented in excellent condition. Further benefits include UPVC double glazing and gas central heating throughout.

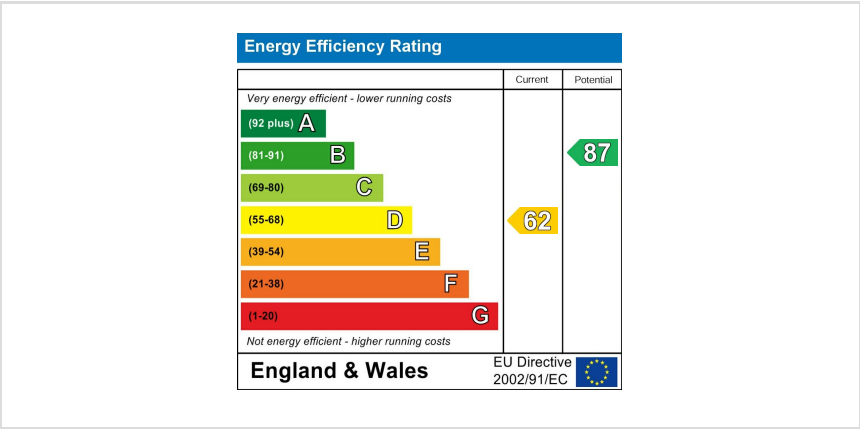
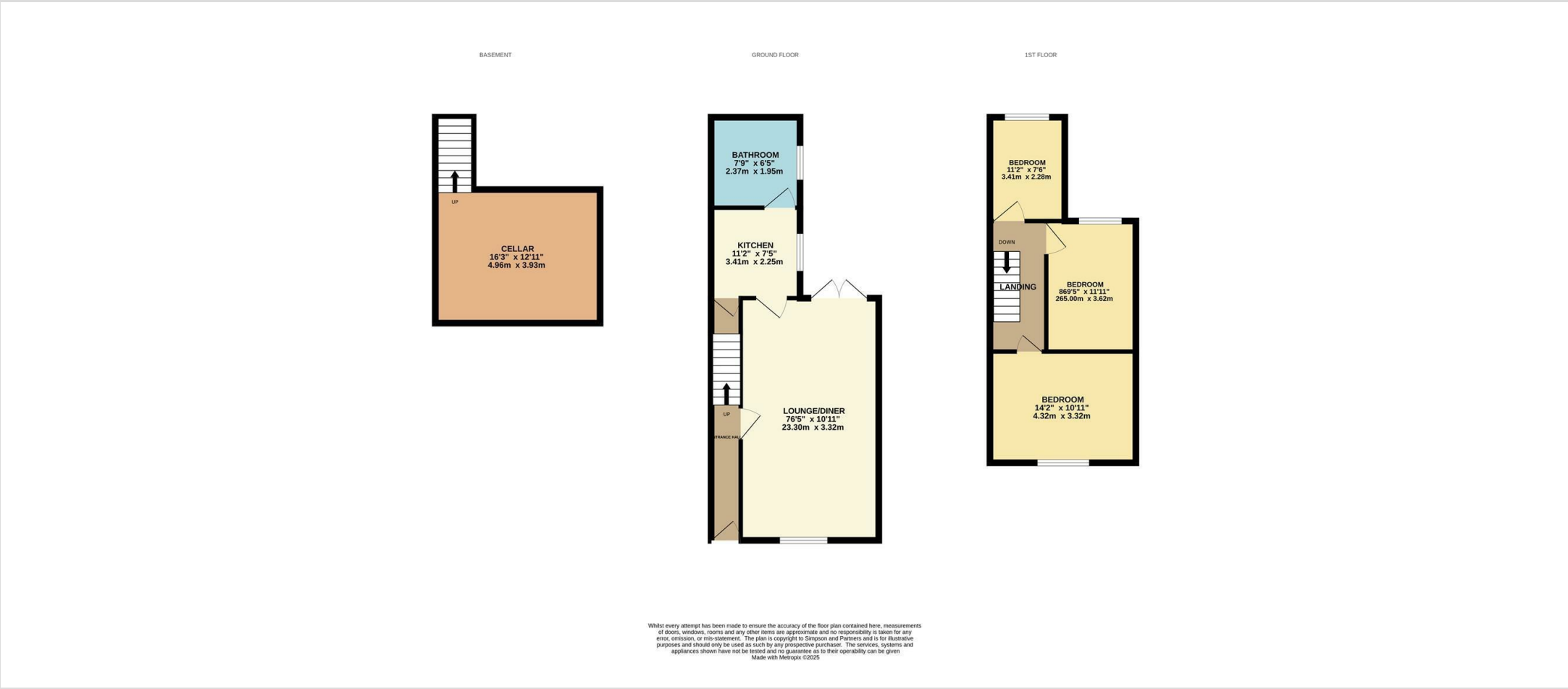
Available now, this attractive home combines character, space, and modern comfort in a popular location close to local amenities and transport links. Early viewing is highly recommended.

EPC RATING - D

COUNCIL TAX BAND - A

£1,300 Per month









Derran Dooley  
Partnered With  
**Simpsons**  
Property Experts

Tel: 01604 969706

Email: [northampton@simpsonspropertyexperts.co.uk](mailto:northampton@simpsonspropertyexperts.co.uk)

Web: [simpsonspropertyexperts.co.uk/our-locations/northampton](http://simpsonspropertyexperts.co.uk/our-locations/northampton)

