



Green Dragon Lane, TW8

£1,800 Per calendar month

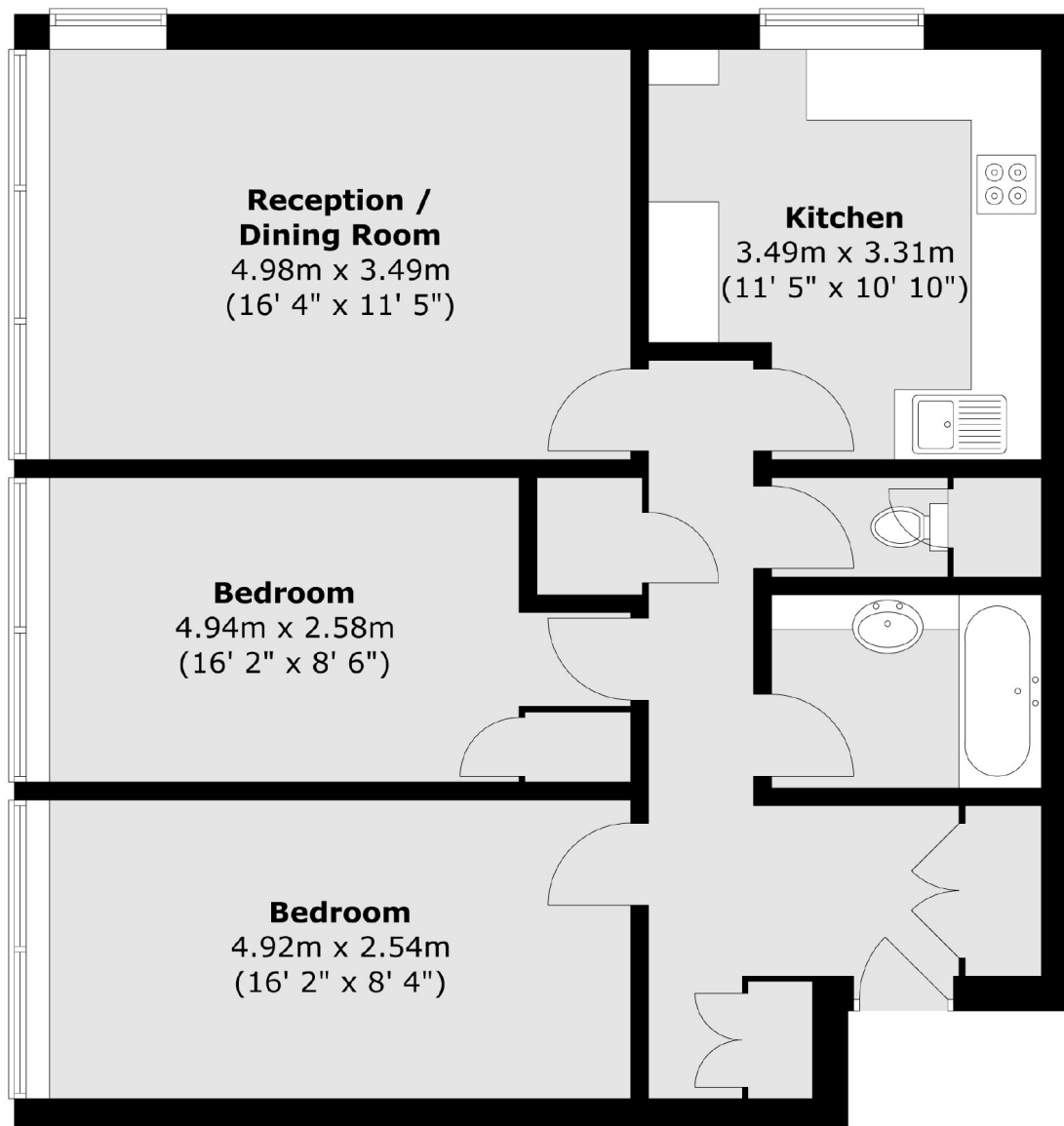
A spacious and recently refreshed two-bedroom flat featuring wooden flooring and stylish tiles throughout. The property comes with well-maintained appliances, including a washer-dryer and a full-size American-style fridge-freezer. The flat offers pleasant views, and resident parking is available.

This property is located with excellent transport links. Kew Bridge Overground Station and Brentford Train Station are within walking distance, offering direct services to Central London. Several bus routes provide quick connections to surrounding areas, including easy access to the District Line, Piccadilly Line, and London Overground at South Ealing and Gunnersbury stations. For drivers, the A4/M4 is easily accessible, offering direct routes to the M25, Heathrow Airport, and beyond, ensuring smooth travel across London and the wider area.

Features

- Two bedrooms
- Broad Views
- Spacious
- Recently Refreshed
- Well-maintained
- Parking Available

Green Dragon Lane, Brentford, TW8



Total area (approx.) : 73.7 sq. m (793 sq. ft)