



3 Meadow Close
Marlow, Buckinghamshire

3 MEADOW CLOSE, MARLOW



Details



- Extended semi-detached family home with flexible accommodation
- Private garden and terrace for entertaining
- Sought after and quiet cul-de-sac location within a level walk to Marlow High Street (0.6 miles) and Station (0.4 miles)
- Spacious Kitchen/Breakfast Room with utility and cloakroom
- Open plan sitting and dining room
- Four to five bedrooms including main bedroom with ensuite
- Ample driveway parking and additional external storage
- Catchment area for well regarded primary, secondary and grammar schooling
- Additional potential to extended as planning permission previously granted (now lapsed)
- Available with no onward chain

PROPERTY PROFILE

Nestled within a highly sought-after and tranquil cul-de-sac, this extended four-bedroom semi-detached family home presents an exceptional opportunity for discerning buyers in Marlow. The property offers flexible and spacious accommodation, perfectly suited for modern family living.

An initial entrance porch leads into a welcoming reception hall, complete with convenient understairs storage. From here, you will find access to Bedroom 4 and a versatile room that could serve as an office or Bedroom 5, offering excellent flexibility for family needs or working from home. The heart of the home is undoubtedly the spacious kitchen/breakfast room, a bright and airy area ideal for casual dining and family gatherings. Conveniently located off the kitchen is a practical utility room, which also provides access to a ground floor cloakroom. A notable feature of the ground floor is the main bedroom, thoughtfully positioned off the kitchen/breakfast room, benefiting from its own private en-suite shower room, providing a luxurious and accessible retreat.

The open-plan sitting and dining room offers a versatile space for both relaxation and entertaining, seamlessly connecting the living areas.

Ascending to the first floor, you will find two well-proportioned double bedrooms, each offering comfortable living spaces. A further family bathroom serves these bedrooms, featuring both a bath and an additional shower cubicle, catering to all preferences.

Externally, the property truly shines. A private garden and terrace provide an idyllic setting for outdoor entertaining, al fresco dining, or simply enjoying the peaceful surroundings. The ample driveway parking ensures convenience for multiple vehicles, complemented by additional external storage solutions.

Location

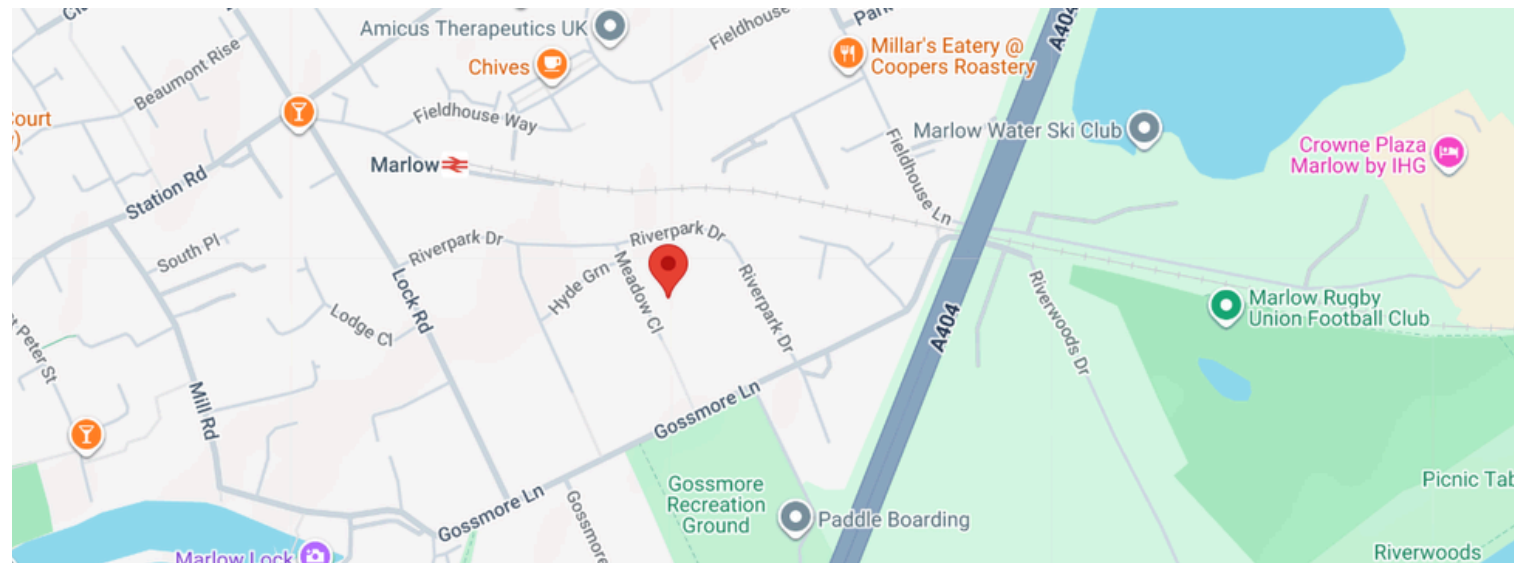
THE NEIGHBOURHOOD

Location is paramount, and this property excels. Situated just 0.6 miles from Marlow High Street and a mere 0.4 miles from Marlow Station, residents benefit from easy access to the town's vibrant array of independent shops, acclaimed restaurants, and essential amenities. For families, the property falls within the catchment area for well-regarded primary, secondary, and grammar schooling, a significant advantage for educational planning.

Adding to its appeal, the property previously held planning permission for further extension, which, although now lapsed, indicates the potential for future enhancements should a new owner wish to explore this option. Furthermore, this desirable home is available with no onward chain, promising a smoother and quicker transaction process.

This extended family home in Marlow offers a rare blend of spacious living, a prime location and significant potential, making it an ideal choice for those seeking a comfortable and convenient lifestyle in one of Buckinghamshire's most desirable towns. Early viewing is highly recommended to fully appreciate all that this exceptional property has to offer.

3 Meadow Close,
Marlow,
Buckinghamshire,
SL7 1QJ





3 MEADOW CLOSE, MARLOW





3 MEADOW CLOSE, MARLOW





3 MEADOW CLOSE, MARLOW





3 MEADOW CLOSE, MARLOW





3 MEADOW CLOSE, MARLOW





3 MEADOW CLOSE, MARLOW


3 MEADOW CLOSE, MARLOW



3 Meadow Close

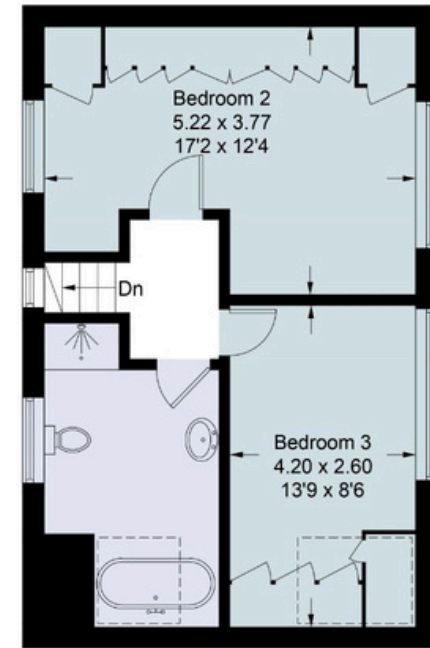
Approximate Gross Internal Area = 178.6 sq m / 1,922 sq ft
 Storage / Plant Room = 7.0 sq m / 75 sq ft
 Total = 185.6 sq m / 1,997 sq ft



 = Reduced headroom below 1.5m / 5'0



Ground Floor



First Floor

This plan is for layout guidance only. Not drawn to scale unless stated. Windows and door openings are approximate. Whilst every care is taken in the preparation of this plan, please check all dimensions, shapes and compass bearings before making any decisions reliant upon them.

© CJ Property Marketing Ltd Produced for F&P Agency



Your Managing Partner

F&P Agency is transforming the way property is sold.

We're committed to providing exceptional service from start to sale, to make your home buying or selling experience as smooth and successful as possible.

Team



Giles Davidson
Managing Partner, Marlow & Bourne End Region

F & P AGENCY

☎ 01628 956528

🔗 www.fandpagency.com

✉ giles@fandpagency.com



SCAN TO BOOK A VIEWING

Contact Us
Today

F & P AGENCY

F&P
AGENCY