



CHARLIE SKIPP

exp[®] UK




@ charlie.skipp@exp.uk.com

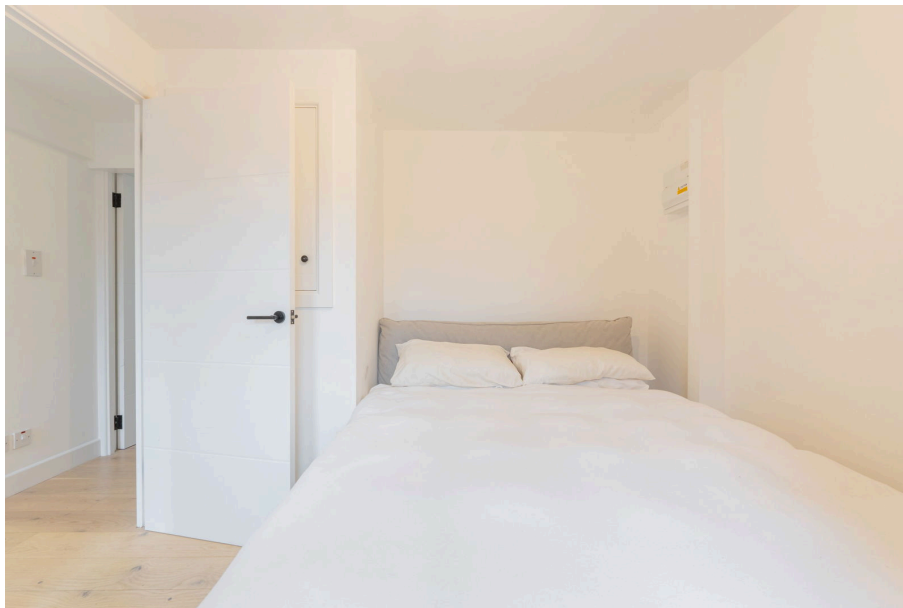
charlieskipp.exp.uk.com

07721 760 372

St. Pauls Square, Birmingham, B3 1QS

Offers Over £150,000

 1  1  1



REF: CS1106

Welcome to Stevens Terrace, an exceptional opportunity for investors or first-time buyers. This beautifully presented and thoughtfully improved one-bedroom, second-floor apartment offers a prime position overlooking the highly sought-after St. Paul's Square in the Jewellery Quarter.

The property boasts a welcoming communal entrance hall with stairs and lift access, leading to a private entrance hallway. The open-plan living and kitchen area enjoys picturesque views of St. Paul's Square, with a fully refitted kitchen complete with oven, hob, extractor and integrated fridge. The refitted shower room features a double shower cubicle, low-level WC, sink with built-in storage and heated towel rail. The bedroom also benefits from delightful views over the Square, offering a peaceful retreat in an enviable location.

Nestled in the heart of Birmingham, the Jewellery Quarter has a rare village-like charm that makes it feel like a welcoming community in the middle of the city. It's this sense of warmth and creativity that draws in artists, makers, and entrepreneurs, along with a great mix of independent bars, restaurants, and a thoughtful approach to regeneration. The Jewellery Quarter is refreshingly laid-back – not at all the grey, crowded feel you'd expect from such a central location. Instead, it stands out as a hidden gem, with its unique character and a distinctive personality that makes it the perfect place to call home. Whether you're working in the nearby Colmore Business District or simply looking for a vibrant, yet tranquil spot to settle, the Jewellery Quarter offers something truly special.





- REF: CS1106
- One Bedroom Apartment
- Second Floor Apartment
- Situated On St. Pauls Square
- Open Plan Lounge And Kitchen
- Views Over The Square
- Recently Refurbished
- Perfect For First Time Buyers Or Investors
- City Centre Living
- 387 Sq. Ft.

