



£1,100 PCM

Yeatmans Old Mill - The Quay, Poole

www.quayliving.co.uk



Quay Living are delighted to offer for Rent this characterful two-bedroom duplex apartment with great harbour views in Yeatmans' Old Mill on Poole Quay. The property is on the second and third floor. The lower floor offers two double bedrooms and a bathroom with shower over bath, wc and sink. Stairs lead up to a bright, open-plan living space comprising lounge/ diner and galley style kitchen with Velux windows overlooking the water.

The apartment is modern & fresh throughout.

An off-road allocated parking space could be made available for an extra £80 charge pcm.

Available Now!!

Call or email Quay Living for your appointment to view!!

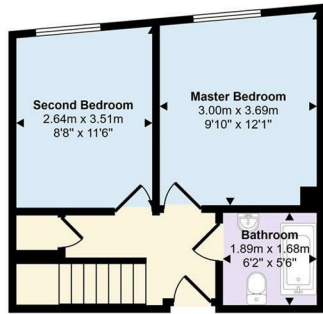
Council Tax D

EPC D

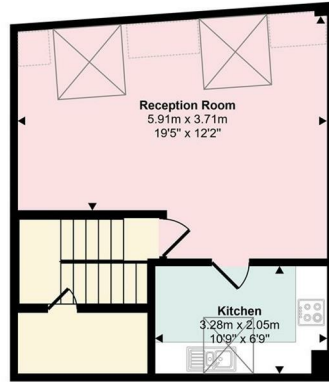




Approx Gross Internal Area
71 sq m / 762 sq ft



Ground Floor
Approx 31 sq m / 333 sq ft



First Floor
Approx 40 sq m / 430 sq ft

Denotes head height below 1.5m

This floorplan is only for illustrative purposes and is not to scale. Measurements of rooms, doors, windows, and any items are approximate and no responsibility is taken for any error, omission or mis-statement. Icons of items such as bathroom suites are representations only and may not look like the real items. Made with Made Snappy 360.



Energy Efficiency Rating		
	Current	Potential
Very energy efficient - lower running costs		
(92 plus) A		
(81-91) B		
(69-80) C		
(55-68) D		
(39-54) E		
(21-38) F		
(1-20) G		
Not energy efficient - higher running costs		
England & Wales	EU Directive 2002/91/EC	



Agent Note: Whilst every care has been taken to prepare these sales particulars, they are for guidance purposes only. All representations including descriptions, dimensions and photos are given, in good faith and are believed to be correct, but any intending purchaser should not rely on them as statements or representations of fact but must satisfy themselves as to their correctness. Appliances and central heating systems have not been checked by Quay Living or their employees and we recommend that purchasers instruct a qualified person to check all appliances / service before legal commitment.



01202 683444
Orchard Plaza, 41 High Street
Poole, Dorset, BH15 1EG
www.quayliving.co.uk

