



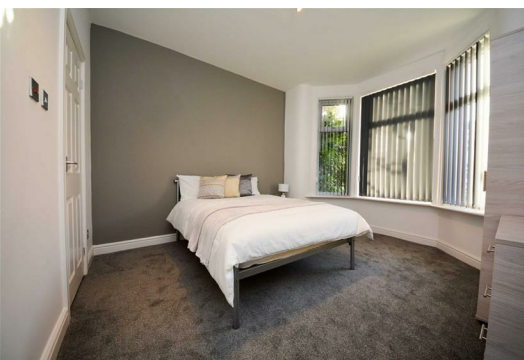
353 Gidlow Lane

Springfield, Wigan, WN6 7PH

£125 Per Week



STUNNING HOUSE SHARE ***ENSUITE BEDROOM*** **MUST VIEW** ****BILLS INCLUDED - COUNCIL TAX, GAS, ELECTRICITY, WATER, WIFI** It is with pleasure that sapphire homes are in a position to offer this ground floor ensuite bedroom in a stunning HMO conversion. The property is close to the heart of Wigan town centre and Wigan Infirmary as well as local amenities and transport links. The property is Fully furnished throughout all with modern furnishing and fixtures and all bills are included in the rental figure. Beautiful large open plan communal lounge, luxury modern fitted kitchen / diner help to compliment each bedroom / ensuite which has a secure lock on their door, carpeted flooring throughout, tasteful decor and excellent furnishings. Externally the property has a garden area to front and rear and this property would suit professional and early internal viewings are highly recommended to appreciate in full. No Pets. No Smokers.



GROUND FLOOR

Entrance / Hallway

Lounge

Kitchen / Diner

Bedroom 1

Bedroom 2

FIRST FLOOR

Landing

Bedroom 3

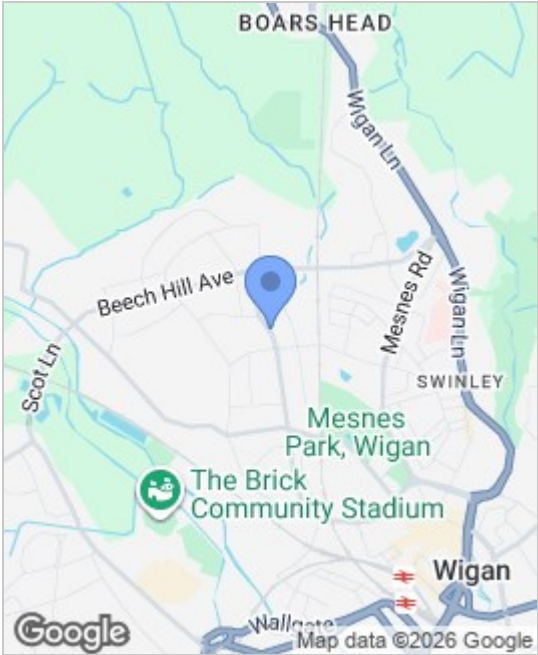
Bedroom 4

Bedroom 5

EXTERNAL

Rear Garden

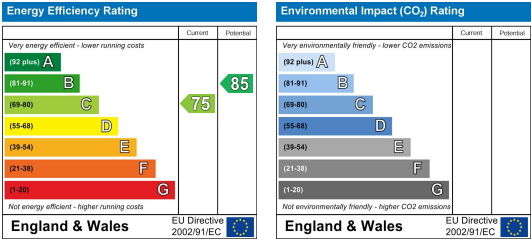
Area Map



Floor Plans



Energy Efficiency Graph



These particulars, whilst believed to be accurate are set out as a general outline only for guidance and do not constitute any part of an offer or contract. Intending purchasers should not rely on them as a representation of fact, but must satisfy themselves by inspection or otherwise as to their accuracy. No person in this firm's employment has the authority to make or give any representation or warranty in relation to the property.

