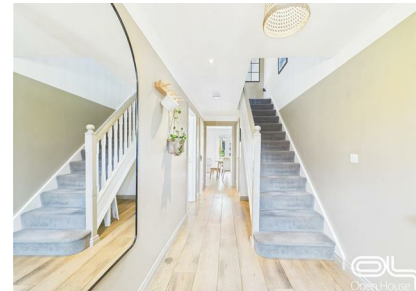


Jefferson Walk, Stafford, ST16 1WF

Offers Over £315,000

Council Tax Band: D



Stylish Four-Bedroom Detached Home in Sought-After Jefferson Walk

Tucked away in the highly desirable and family-friendly development of Jefferson Walk, Stafford, this beautifully presented detached home offers the perfect balance of modern style, practical space, and comfort. Built in 2015 and offering approximately 1,098 sq ft of well-designed living accommodation, it’s an ideal choice for families, professionals, or anyone seeking a move-in ready home in a prime location.



Open House Staffordshire



Energy Efficiency Rating		
	Current	Potential
Very energy efficient - lower running costs		
(92 plus) A		
(81-91) B		
(69-80) C	78	83
(55-68) D		
(39-54) E		
(21-38) F		
(1-20) G		
Not energy efficient - higher running costs		
England & Wales	EU Directive 2002/91/EC	