

Tildesley Road, SW15

£329,000

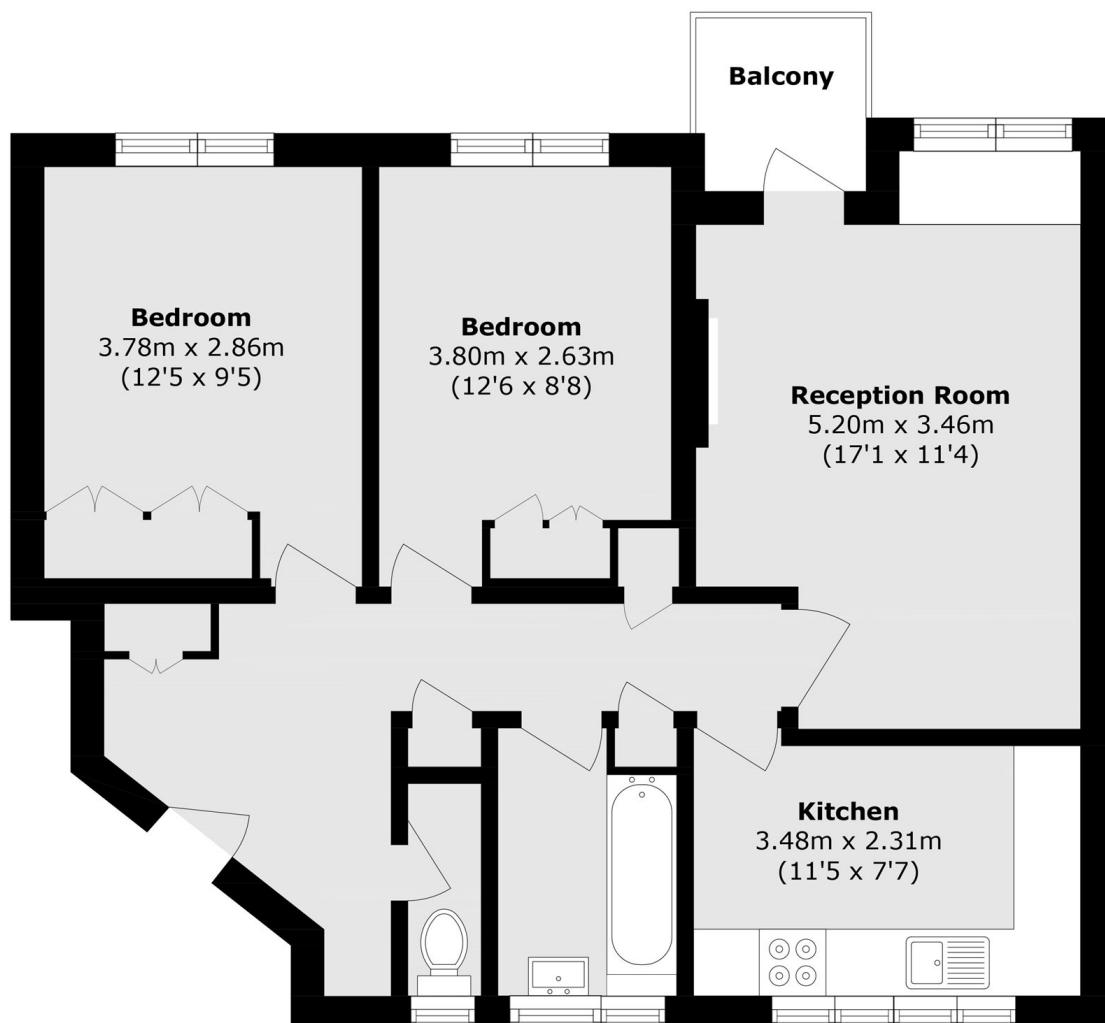
A bright and well-proportioned two-bedroom apartment on Tildesley Road, SW15, Moments from Putney Heath and Richmond Park. Set on the second floor, this spacious home offers a generous reception room with wood-style flooring and built-in shelving, a separate fitted kitchen with large windows bringing in plenty of natural light, two comfortable bedrooms and a modern bathroom. The private balcony provides a pleasant outdoor space.

Ideally located for the green open spaces of Putney Heath and the amenities of Roehampton Village, the property is also well positioned for excellent transport links, including regular buses towards Putney High Street, Barnes Station and Roehampton University, with easy access to the A3 for routes in and out of London.

Features

- Two Bedrooms
- Private Balcony
- Chain Free
- Quiet Location
- 687 Sq. Ft
- Low Service Charge

Tildesley Road, London, SW15



Total area (approx.): 63.9 sq. m (687.8 sq. ft)

Balcony area (approx.): 2.3 sq. m (24.7 sq. ft)