

# FLETCHERS

ESTATE AGENTS



## Chiswick High Road, W4

£600 Per week (£2,600 pcm)

A spacious two bedroom apartment, with wooden flooring throughout the living area, an open-plan kitchen with built-in appliances and two modern bathrooms.

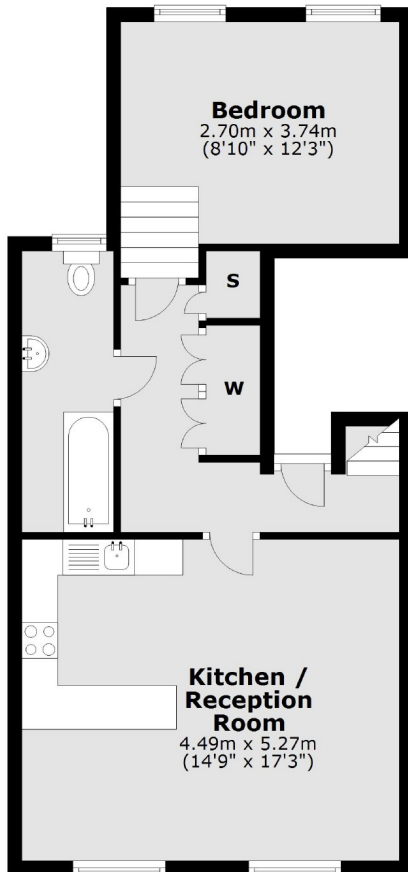
The property is on the bustling Chiswick High Road, just west of Chiswick Park Tube Station with the District line. Chiswick Business Park and Gunnersbury are nearby.

- Two Double Bedrooms • Split-Level • Washer/Dryer • Additional Study/Bedroom • Built-In Storage • Open-Plan Kitchen •

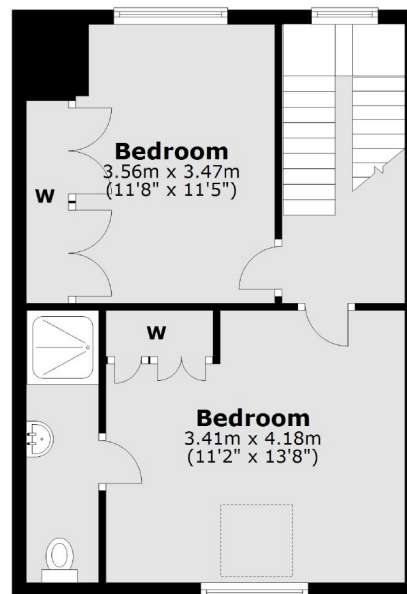
# FLETCHERS

ESTATE AGENTS

## Second Floor



## Third Floor



Total area: approx. 91.5 sq. metres (985.3 sq. feet)

Fletchers Chiswick High Road Lettings  
86 Chiswick High Road, Chiswick, London, W4 1SY  
020 8742 4100  
[chiswicklettings@fletcherstates.com](mailto:chiswicklettings@fletcherstates.com)

Energy Rating: C. We aim to make our particulars both accurate and reliable. However they are not guaranteed; nor do they form part of an offer or contract. If you require clarification on any points then please contact us, especially if you're traveling some distance to view. Please note that appliances and heating systems have not been tested and therefore no warranties can be given as to their good working order.