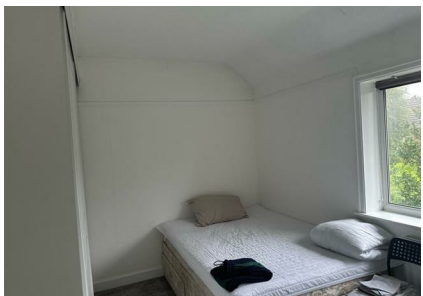


75 Lyndene Road, Manchester, Greater Manchester, M22 4QA
£1,300 Per Month
Council Tax Band: New Build



Nestled in the charming area of Lyndene Road, Wythenshawe, this delightful three-bedroom house offers a perfect blend of comfort and convenience. Upon entering, you are welcomed into a spacious reception room, ideal for both relaxation and entertaining guests. The property boasts three well-proportioned bedrooms, providing ample space for families or those seeking a home office.

The house features a modern bathroom, thoughtfully designed to cater to your daily needs, along with a convenient downstairs WC for added practicality. The front and back gardens are a true highlight, offering a lovely outdoor space for gardening enthusiasts or a safe play area for children.

This property is not only a wonderful family home but also benefits from its location, with local amenities and transport links within easy reach. This house on Lyndene Road presents an excellent opportunity to enjoy a comfortable lifestyle in a welcoming community.



St Johns Court 19b Quay Street, Manchester, M3 3HN

01616760099

manchester@orlandoreid.co.uk

<https://www.orlandoreid.co.uk/manchester/>

