



## Grace Place, E3

£340,000

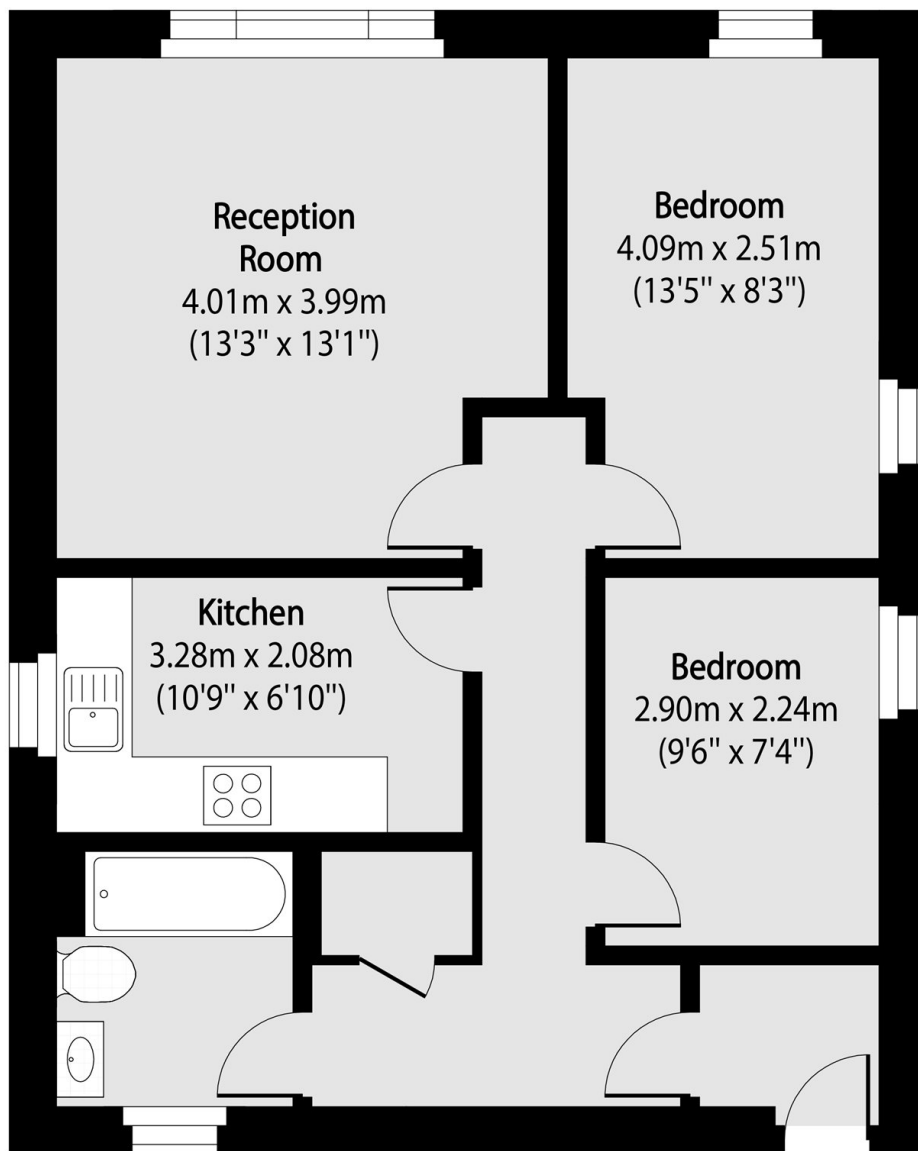
A two bedroom, one bathroom apartment located within a secure purpose build development. This property offers a separate kitchen and living room, generous storage and measures in excess of 600 square feet. There is a parking space included.

Perfectly located close to the A12 for travel out of London. Bromley-by-Bow Station is around 150 metres away for travel in to the City and Stratford on the District and Circle Line.

### Features

- Two Bedrooms
- Secure Development
- Separate Kitchen
- First Floor
- Transport Links
- Parking Space

# Grace Place, London, E3



Total area (approx): 56.02 sq m (605 sq. ft)