

## Teddington Park Road, TW11

### £349,950

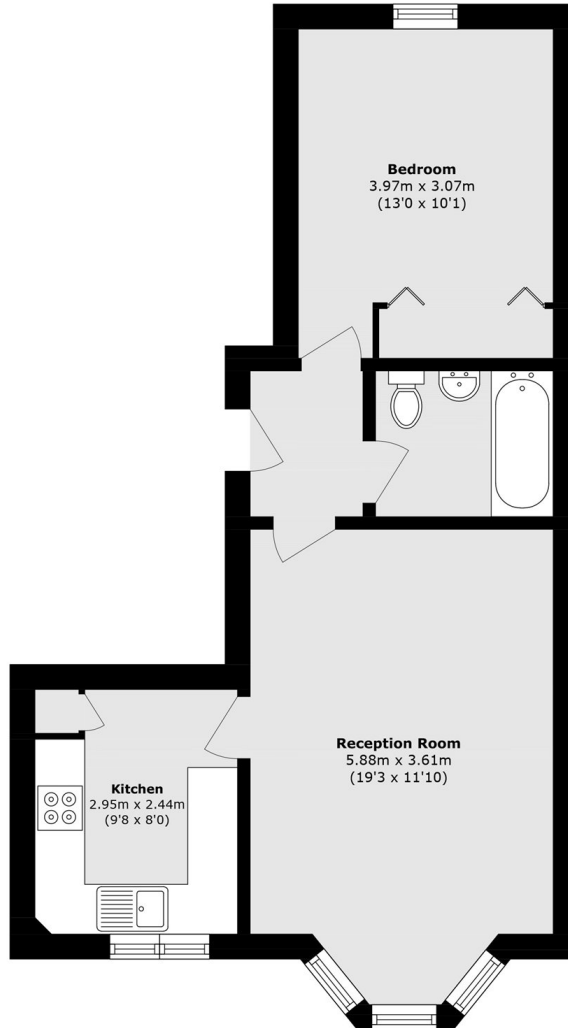
A well-presented first-floor apartment in a highly sought-after central location, just moments from transport links and Teddington High Street. The property offers a bright reception room with floor-to-ceiling bay windows, a separate kitchen, a spacious double bedroom, and a bathroom. The seller is currently extending the lease to 147 years.

Lilac Court is on the corner of Teddington Park Road, perfect to transport by bus or by train. Close to the High Street for shopping along with the River Thames and Bushy Park.

### Features

- One Double Bedrooms
- Lease Extension In Process
- Well Presented
- Bright And Airy
- Excellent Location
- Well Managed Block

# Teddington Park Road, Teddington, TW11



Total area (approx.): 46.3 sq. m (498.3 sq. ft)