



## Stockport Road, Gee Cross. SK14 5EZ

This beautifully presented, characterful 18th century cottage enjoys an attractive setting with lovely country garden. The property is set back from the road behind an attractive cottage garden and lay-by parking and the accommodation includes an enclosed entrance porch, living room and traditional shaker style kitchen. To the first floor is a spacious bedroom and large modern bathroom suite. To the second floor is a large bedroom and separate dressing room / home office.

Take a look - this cottage really is a delight and an internal inspection is essential.

Tenure: Freehold. Council Tax Band: B. EPC rating: D

Offers In Excess of £325,000





### LIVING ROOM

14' 11" x 13' 7" (4.54m x 4.14m)



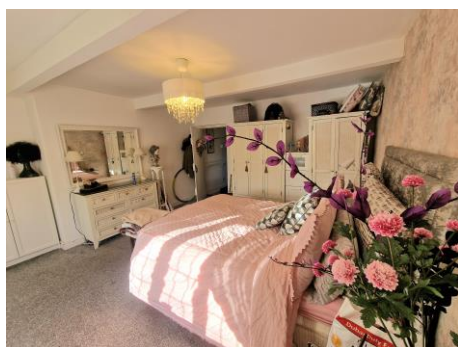
### FITTED KITCHEN DINER

18' 4" x 12' 1" (5.58m x 3.68m)



### BEDROOM ONE

15' 0" x 12' 3" (4.57m x 3.73m)



### BEDROOM TWO

21' 3" x 9' 3" (6.47m x 2.82m)



### OFFICE / POSSIBLE BEDROOM THREE

12' 5" x 6' 8" (3.78m x 2.03m)



### BATHROOM

12' 3" x 6' 7" (3.73m x 2.01m)



### OUTSIDE



Thomas Lardner Estate Agents, which is a trading name of Stockport Residential Ltd, for themselves and for the vendors or lessors of this property whose agents they are give notice that: (1) all measurements are approximate and any plans provided are not to scale; (2) the particulars are set out as a general outline only for the guidance of intending purchasers or lessors, and do not constitute, nor constitute part of, an offer or contract; (3) we have not tested any apparatus, equipment, fixtures, fittings or services, and so cannot verify that they are in working order or fit for purpose; (4) solicitors should confirm moveable items described in these particulars are, in fact, included in the sale since circumstances change during marketing or negotiations.

T709 Printed by Ravensworth 01670 713330