



**Connells**

Willow Way  
COVENTRY



### Property Description

A Modern Sanctuary with Cutting-Edge Efficiency nestled within the sought-after Bluebell Walk estate, this stunning three-bedroom semi-detached home offers the perfect blend of contemporary style and future-proofed technology. Built with a focus on sustainability, the property benefits from solar panels and a dedicated EV charging point for two cars, achieving an impressive Energy Rating of B.

The accommodation opens with a welcoming entrance hall leading to a bright and spacious lounge. At the heart of the home is a beautifully presented fitted kitchen/dining room, which comes complete with a full suite of integrated appliances, including an electric oven, gas hob, fridge/freezer, washing machine, and dishwasher. This space seamlessly transitions into a bright conservatory, with French doors that open out onto the landscaped garden-perfect for indoor-outdoor entertaining. A convenient guest W/C completes the ground floor.

Upstairs, you will find three well-proportioned bedrooms. The master suite is a true highlight, boasting an en-suite shower room and the rare luxury of two built-in wardrobes. The remaining bedrooms share a contemporary family bathroom featuring a stylish chromium radiator/towel holder

Externally, the property continues to impress. The front offers a wide 2 car space off-road parking. The private rear garden has been thoughtfully designed with a decked patio area, a lush lawn, and a practical garden shed.

### Approach

Front door.

### Entrance Hall

Stairs to first floor, radiator.

### Guest W/C

Comprising, toilet, wash hand basin, radiator and double glazed window to the front elevation.

### Lounge

Double glazed window to the front elevation, radiator and door to downstairs cupboard.

### Fitted Kitchen/Dining Room

Wall and base mounted units incorporating an inset one and a half bowl single drainer stainless steel sink unit with work surfaces and tiled splashbacks over. Integrated electric oven and gas hob with cookerhood over, integrated fridge/freezer, integrated washing machine, integrated dishwasher, radiator, double glazed window to the rear elevation and doors to conservatory.

### Conservatory

Double glazed French doors opening onto the rear garden.

## First Floor Landing

Storage cupboard and doors to;

## Bedroom One

Double glazed window to the front elevation, two built-in wardrobes and radiator.

## En-Suite

Tiled, comprising shower cubicle, wash hand basin, toilet, radiator, fitted cupboard and double glazed window to the front elevation.

## Bedroom Two

Double glazed window to the rear elevation and radiator.

## Bedroom Three

Double glazed window to the rear elevation and radiator.

## Fitted Bathroom

Tiled, comprising bath with shower over, wash hand basin, toilet, chromium radiator/ towel holder, fitted cupboard and extractor fan.

## Outside

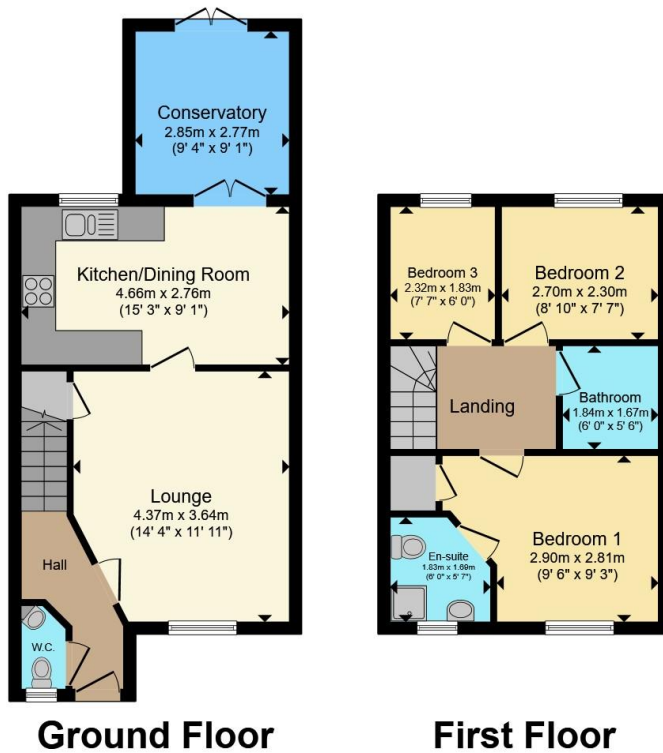
### Front Of Property

Well maintained front garden with off road parking and a EV charging point.

### Rear Garden

Decked patio area beyond being laid to lawn with garden shed and an outdoor TRX gym





Total floor area 77.7 m<sup>2</sup> (836 sq.ft.) approx

This floor plan is for illustrative purposes only. It is not drawn to scale. Any measurements, floor areas (including any total floor area), openings and orientation are approximate. No details are guaranteed, they cannot be relied upon for any purpose and they do not form part of any agreement. No liability is taken for any error, omission or misstatement. A party must rely upon its own inspection(s). Powered by [www.propertybox.io](http://www.propertybox.io)



To view this property please contact Connells on

**T 02476 553 093**  
**E [coventry@connells.co.uk](mailto:coventry@connells.co.uk)**

38 New Union Street  
 COVENTRY CV1 2HN

EPC Rating: B Council Tax  
 Band: B

**view this property online [connells.co.uk/Property/COV323783](http://connells.co.uk/Property/COV323783)**

Tenure: Freehold



1. MONEY LAUNDERING REGULATIONS Intending purchasers will be asked to produce identification documentation at a later stage and we would ask for your co-operation in order that there will be no delay in agreeing the sale. 2. These particulars do not constitute part or all of an offer or contract. 3. The measurements indicated are supplied for guidance only and as such must be considered incorrect. Potential buyers are advised to recheck measurements before committing to any expense. 4. We have not tested any apparatus, equipment, fixtures, fittings or services and it is in the buyers interest to check the working condition of any appliances.

Connells Residential is registered in England and Wales under company number 1489613, Registered Office is Cumbria House, 16-20 Hockliffe Street, Leighton Buzzard, Bedfordshire, LU7 1GN. VAT Registration Number is 500 2481 05.

**See all our properties at [www.connells.co.uk](http://www.connells.co.uk) | [www.rightmove.co.uk](http://www.rightmove.co.uk) | [www.zoopla.co.uk](http://www.zoopla.co.uk)**

Property Ref: COV323783 - 0007