



Guide Price
£75,000

Leasehold

1x  1x  1x 

**Forest Dene Court,
Cedar Road, Sutton,
Surrey, SM2**

OVER 60?

Secure this property
for up to **59% less!**

cubitt & west
Helping you move forwards



Main features

- Recently re-decorated throughout and ready to move in to
- No onward chain to wait for
- Sought after South Sutton location
- Moments from High Street and station
- Warden assisted with lift service

Accommodation

SECOND FLOOR

Entrance Hall

Lounge: 15'5 x 10'6 (4.70m x 3.20m)

Kitchen: 7'3 x 5'3 (2.21m x 1.60m)

Bedroom : 12'1 x 8'6 (3.69m x 2.59m)

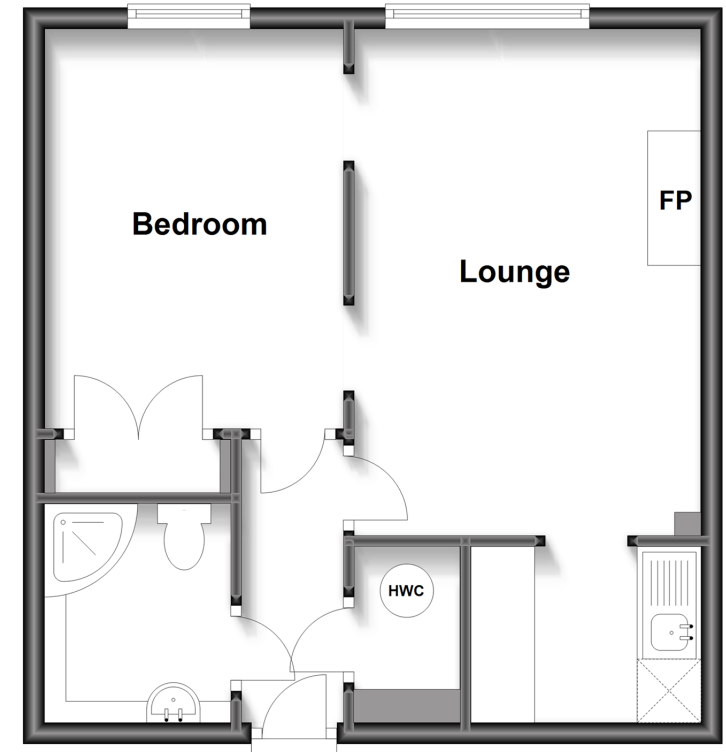
Shower Room: 6'7 x 5'2 (2.01m x 1.58m)

OUTSIDE

Residents Permit Parking
Communal Gardens

Second Floor

Approx. 39.1 sq. metres (420.6 sq. feet)



Call Sutton - 020 8661 0330 ■ cubittandwest.co.uk

- Legal advice should be taken to verify fixtures/fittings, planning, alterations and/or lease details
- Appliances & services are untested, dimensions are approximate and floor plans are not to scale
- Through a Homewise Home For Life Plan people aged 60+ can secure this property for up to 50% less, by purchasing a Lifetime Lease



22017296/20251210/ND/KV