

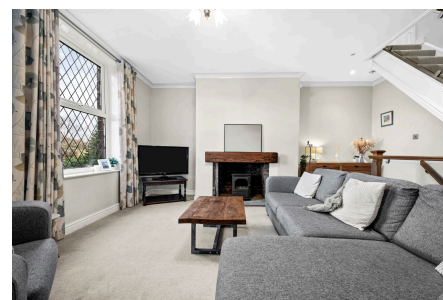
WEST RIDING

SELLING HOMES

Huddersfield Road, Delph, Saddleworth

£375,000

🛏 4 🚿 2 🚲 3



This larger than average four bedroom terraced home is an exceptional opportunity and a true must-see. Located in the heart of Delph village, the property enjoys close proximity to local amenities and is within easy walking distance of well-regarded primary schools, making it an ideal choice for a growing or larger family.

Upon entering, you are welcomed by a hallway that leads to two versatile ground-floor reception rooms, offering flexible living space to suit modern family life. The main lounge is a standout feature, boasting stunning views across the Saddleworth countryside and a charming stone fireplace with a log burner, creating a warm and inviting atmosphere.



hello@west-riding.co.uk

01457 819181

www.west-riding.co.uk

WEST RIDING

SELLING HOMES

Key Features

- Larger Than Average Terrace Property
- Close to Local Primary Schools
- Over Four Floors
- Countryside Views
- Within Walking Distance to Delph Village
- Close to Countryside Walks
- Downstairs WC
- Energy Rating - D

