

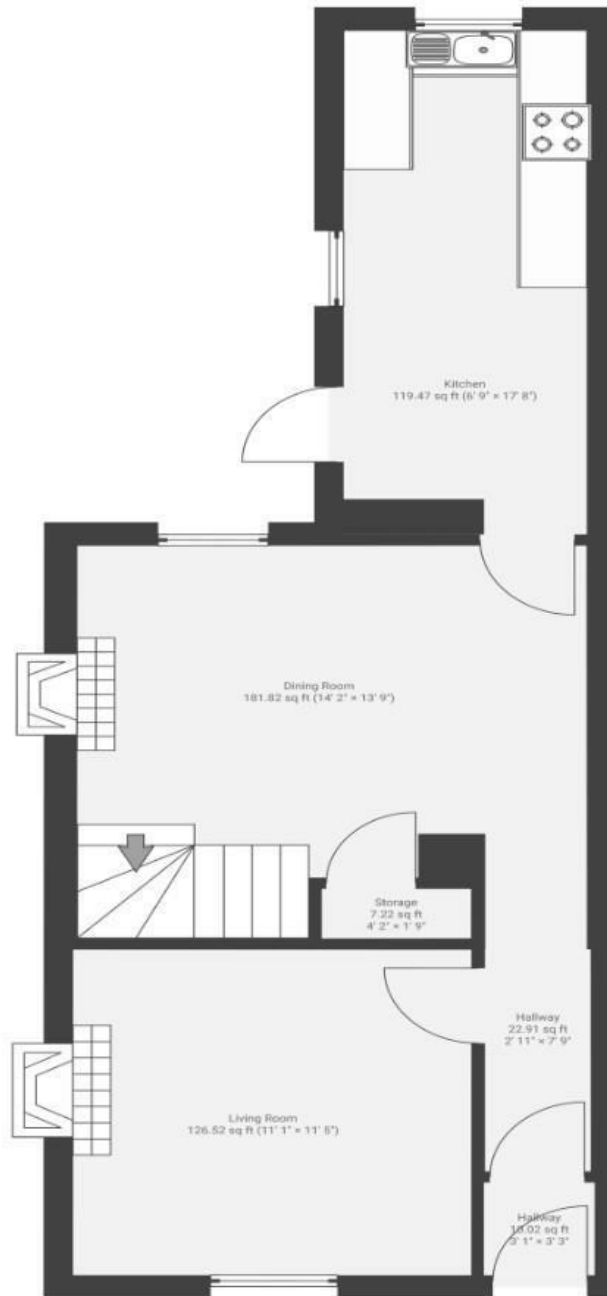
Somerset Terrace

WINDMILL HILL

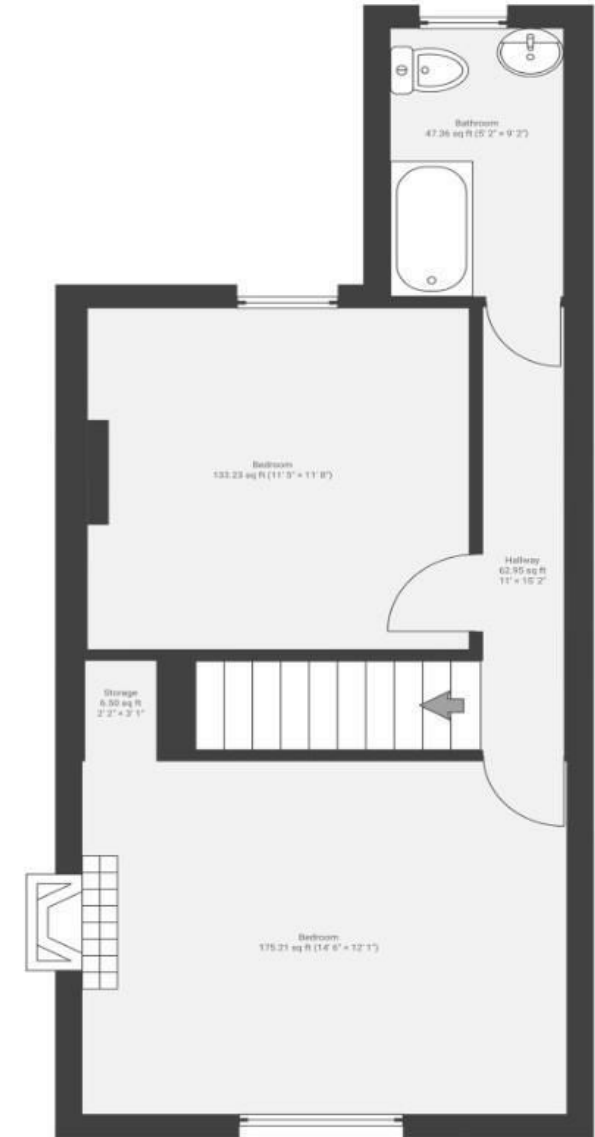
APPROXIMATE FLOOR AREA
90.0 SQM / 968 SQFT



GROUND FLOOR



FIRST FLOOR



Illustrations are for reference purposes only, measurements are approximate, not to scale.

Boardwalk

Somerset , BRISTOL

£
£465,000

ZZZ
2 Bedrooms

📍
BS3 4LJ

🦆
1 Bathrooms

"Having this much outdoor space in Bristol feels special. A Summer afternoon might mean a walk home through the park, and then the back doors are open and the BBQ's on. Weekends are usually slow starts, coffee in the garden and plans that drift between North Street, perhaps tennis in the park and back home again. Then there are the afternoons tending to tomatoes in the greenhouse, or off to the cabin to tinker on small wood working projects. It's been a dream house for our time in Bristol."

