

MATTHEW JAMES

Residential Sales • Lettings • Management



Lady Margaret Road, Tufnell Park, N19 5ER
£2,200 Per Calendar Month





£2,200 Per Calendar Month

Lady Margaret Road

Tufnell Park, N19 5ER

- Two Double Bedrooms
- Fitted Kitchen
- Landscaped Communal Garden
- Furnished
- No HMO Licence
- Lounge
- Bathroom/WC
- Ground Floor
- Available Now

A spacious two bedroom ground floor garden flat located on a quiet tree lined road moments from a selection of shops, cafes and restaurants on both Tufnell Park and Kentish Town high streets, as well as both of their Northern Line Underground Stations. The flat offers a good sized living room with ample space for lounge and dining areas with a separate kitchen and further benefits from lovely original features including high ceilings with decorative cornicing, tall sash windows and a decorative fireplace. To the west and a short walk away is Parliament Hill Fields with its selection of amenities including a lido, athletics track, tennis courts and weekend market which all lead directly onto the wide open spaces of Hampstead Heath. Furnished. Available now. NO HMO LICENCE.



[Hallway](#)

[Lounge](#)

[Kitchen](#)

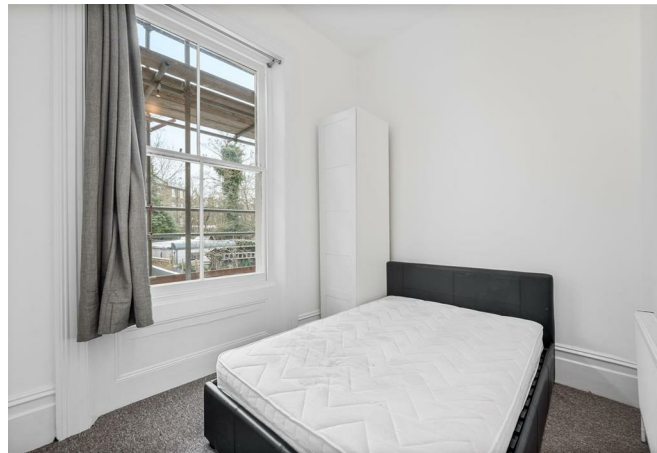
[Bedroom One](#)

[Bedroom Two](#)

[Bathroom/WC](#)

[Communal Garden](#)

[Additional Information](#)



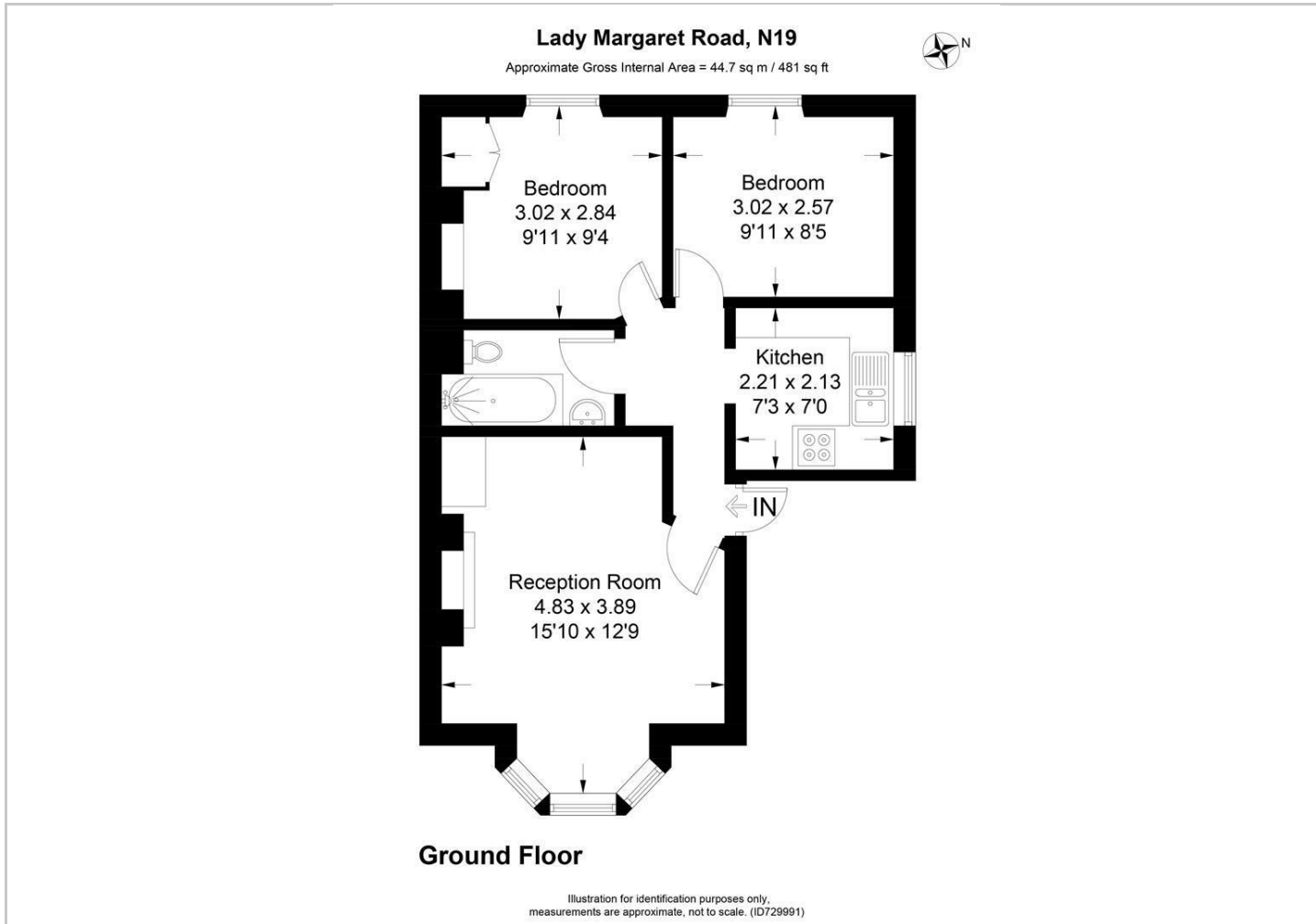


Directions





Floor Plans

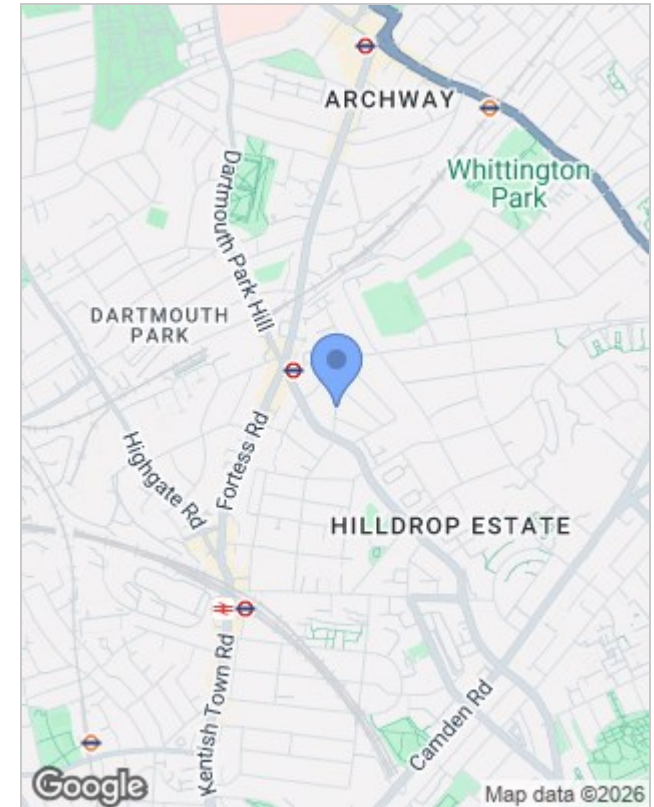


Viewing

Please contact our Kentish Town Office on 020 7284 4343 if you wish to arrange a viewing appointment for this property or require further information.

The particulars are set out as a general outline only for the guidance of intended purchasers or lessees, and do not constitute, any part of a contract. Nothing in these particulars shall be deemed to be a statement that the property is in good structural condition or otherwise nor that any of the services, appliances, equipment or facilities are in good working order. Purchasers should satisfy themselves of this prior to purchasing.

Location Map



Energy Performance Graph

