



smarthomes

Rashwood Close

Hockley Heath, Solihull

- A Well Presented Four Bedroom Family Home
- Kitchen/Diner & En-Suite Shower Room
- Private West Facing Rear Garden
- Side Garage & Driveway Parking

Offers Over £425,000

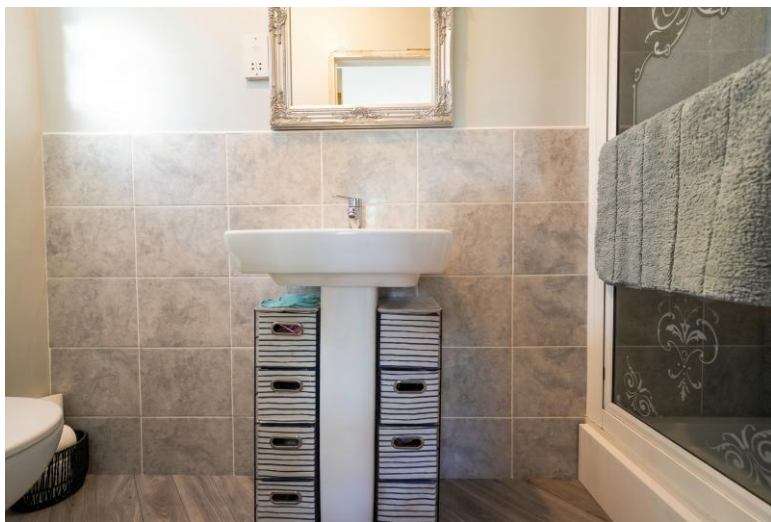
Current EPC Rating - C
Current Council Tax Band - D





Property Description

A well presented semi-detached family home situated in a delightful cul-de-sac location offering accommodation comprising a spacious lounge, kitchen/diner, conservatory, four bedrooms, en-suite shower room, family bathroom, private West facing rear garden, side garage and driveway parking



Rooms & Measurements

Spacious Lounge to Front 4.5m x 3.8m (14'9" x 12'5")

Kitchen/Diner to Rear 4.9m x 3.2m (16'0" x 10'5")

Conservatory 2.8m x 2.7m (9'2" x 8'10")

Bedroom One to Front 3.2m x 2.9m (10'5" x 9'6")

En-Suite Shower Room

Bedroom Two to Rear 2.8m x 2.2m (9'2" x 7'2")

Bedroom Three to Front 2.9m x 1.9m (9'6" x 6'2")

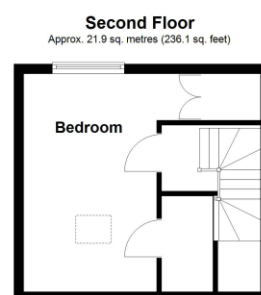
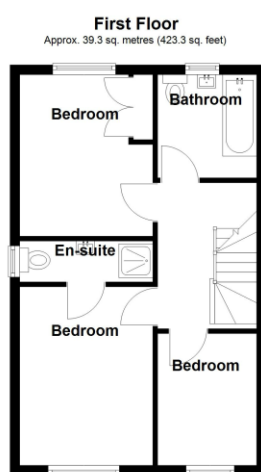
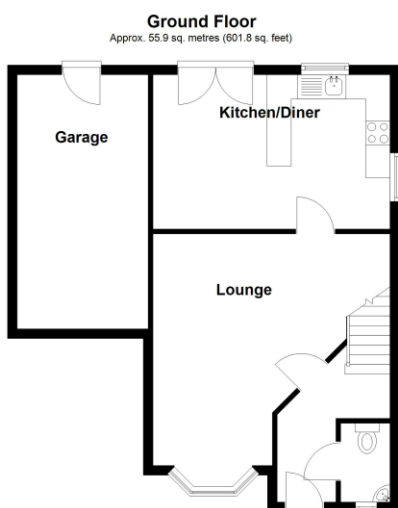
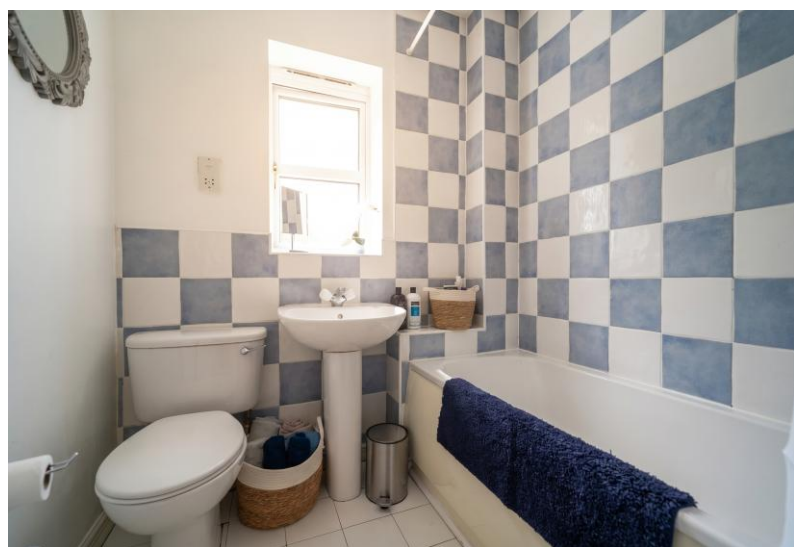
Family Bathroom to Rear 1.9m x 1.8m (6'2" x 5'10")

Dual Aspect Second Floor Bedroom Four 4.7m x 3.2m (15'5" x 10'5")

Side Garage 5.6m x 2.4m (18'4" x 7'10")

Tenure

We are advised by the vendor that the property is freehold. We would advise all interested parties to obtain verification through their own solicitor or legal representative. EPC supplied by Nigel Hodges. Current council tax band – D



Total area: approx. 117.2 sq. metres (1261.3 sq. feet)

316 Stratford Road
Shirley
Solihull
B90 3DN

www.smart-homes.co.uk
0121 744 4144

Agents Note: Whilst every care has been taken to prepare these particulars, they are for guidance purposes only. We believe all information to be correct from the day of marketing however, we advise and recommend that your conveyancer and or surveyor verifies all information supplied. All measurements are approximate are for general guidance purposes only and whilst every care has been taken to ensure their accuracy, they should not be relied upon and potential buyers are advised to recheck the measurements.