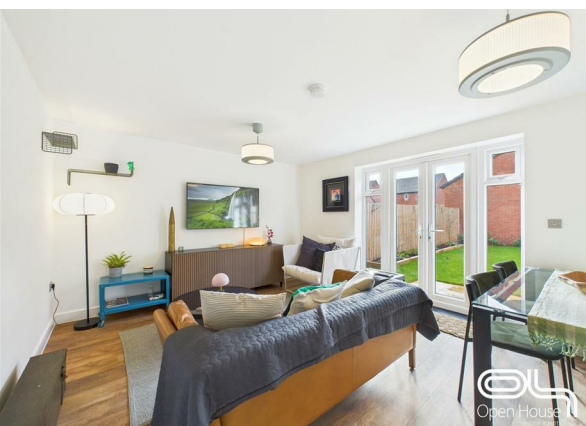
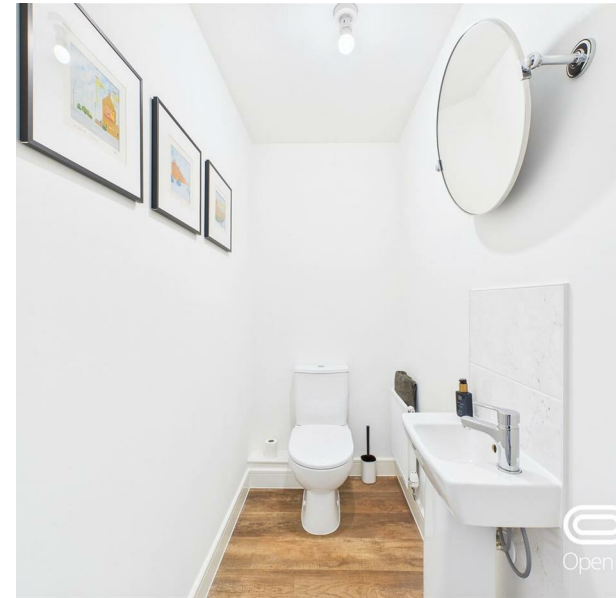
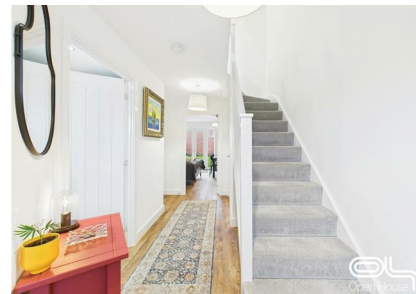


**Orford Gardens, Stafford, ST16 1ZB**

**£1,345 Per Month**

**Council Tax Band: D**



Welcome to this stunning semi-detached house located in the desirable Orford Gardens, Stafford. This modern property, built in 2024, offers a generous living space of 1,149 square feet, making it an ideal home for families or those seeking a comfortable lifestyle.

A spacious reception room provides a warm and inviting atmosphere, perfect for entertaining guests or enjoying quiet evenings with family. The house boasts three well-proportioned bedrooms, each designed to offer a peaceful retreat at the end of the day. With three bathrooms, including en-suite facilities, convenience and privacy are assured for all residents.

The contemporary design and thoughtful layout of this home ensure that every corner is utilised effectively, providing both functionality and style. The property is situated in a friendly neighbourhood, making it an excellent choice for those looking to settle in a community-oriented area.

Orford Gardens is conveniently located, offering easy access to local amenities, schools, and transport links, ensuring that everything you need is within reach. This property presents a wonderful opportunity to own a modern home in a sought-after location, combining comfort, style, and practicality.

Do not miss the chance to make this beautiful house your new home.

This property is also available furnished if required - Price to be confirmed.

This property is available from April 7th 2026



Open House Staffordshire



Energy Efficiency Rating		
	Current	Potential
Very energy efficient - lower running costs		
(92 plus) A		94
(81-91) B	85	
(69-80) C		
(55-68) D		
(39-54) E		
(21-38) F		
(1-20) G		
Not energy efficient - higher running costs		
England & Wales	EU Directive 2002/91/EC	