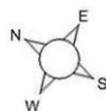


FOR SALE

Manor House Shifnal, TF11 9PB



Manor House, Manor, Shifnal  
Approximate Gross Internal Area  
3695 Sq Ft/343 Sq M



FOR ILLUSTRATIVE PURPOSES ONLY - NOT TO SCALE  
The position & size of doors, windows, appliances and other features are approximate only.  
© ehouse. Unauthorised reproduction prohibited. Drawing ref. dig/8617755/SS



FOR SALE

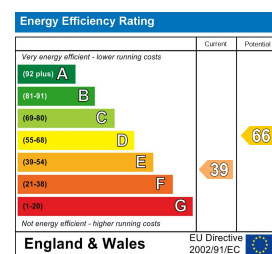
Offers in the region of £675,000

Manor House Shifnal, TF11 9PB

**Property to sell?** We would be delighted to provide you with a free no obligation market assessment of your existing property. Please contact your local Halls office to make an appointment. **Mortgage/financial advice.** We are able to recommend a completely independent financial advisor,

who is authorised and regulated by the FCA. Details can be provided upon request. **Do you require a surveyor?** We are able to recommend a completely independent chartered surveyor. Details can be provided upon request.

Energy Performance Rating



Shifnal Manor is a prestigious semi-detached country house located in the heart of Shifnal, offering a unique opportunity to own a piece of history. Boasting six spacious bedrooms, three luxurious bathrooms, and exquisite period features, the manor is set within approximately an acre of private landscaped grounds, with an additional acre of land available to purchase separately. Perfect for both family living and entertaining, Shifnal Manor offers both comfort and elegance in a highly sought-after location.



01952 971800

Telford Sales  
32 Market Street, Wellington, Telford, TF1 1DT  
E: telford@hallsgb.com



IMPORTANT NOTICE. Halls Holdings Ltd and any joint agents for themselves, and for the Vendor of the property whose Agents they are, give notice that: (i) These particulars are produced in good faith, are set out as a general guide only and do not constitute any part of a contract (ii) No person in the employment of or any agent of or consultant to Halls Holdings has any authority to make or give any representation or warranty whatsoever in relation to this property (iii) Measurements, areas and distances are approximate, Floor plans and photographs are for guidance purposes only (photographs are taken with a wide angled / zoom lenses) and dimensions shapes and precise locations may differ (iv) It must not be assumed that the property has all the required planning or building regulation consents. Halls Holdings, Bowmen Way, Shrewsbury, Shropshire SY4 3DR. Registered in England 06597073.



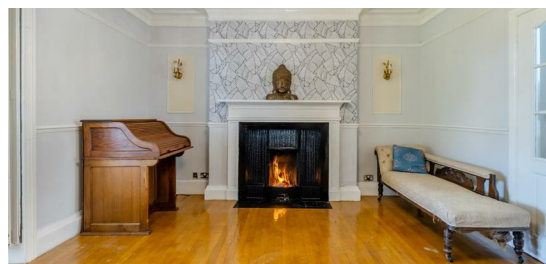
2 Reception Room/s



6 Bedroom/s



3 Bath/Shower Room/s



- Six Bedrooms.
- Ample Parking,
- Additional land available
- Great Transport Links.
- Total ft<sup>2</sup> - 3552
- No Onward Chain

Located in Shifnal, a town renowned for its picturesque surroundings and strong community spirit, the property is well-positioned for easy access to local amenities and transport links. Thoughtfully restored, the manor blends modern living comforts with the timeless elegance of its original design.

This remarkable freehold property presents a rare opportunity to own a historic home with all the modern comforts, making Shifnal Manor the perfect choice for those seeking an exceptional and unique living experience. Contact us today to arrange a viewing.

**LOCATION**

The Manor House is set on the outskirts of Shifnal, a small town with plenty of amenities like shops and restaurants, great transports links with the train station so close and bus services. The location also boasts a range of schools and sports facilities. The property is also a short five minute drive away from Telford Town Centre where there is an array of different services.

**DIRECTIONS**

From junction six on the M54 go towards Shifnal and take exit four. When you come to the roundabout take the third exit. At the next roundabout take the second exit. Stay on the A464 for 1.3 miles before taking the fourth exit at the next roundabout onto Innage Road. In 0.3 miles take the second exit onto Bridgnorth Road. In 320 yards turn left and bear right in 0.4 miles. In 0.2 miles you will arrive at the property.

**GROUND FLOOR**

**LOUNGE**

A spacious lounge with a beautiful feature fireplace and French doors to the rear garden.

**DINING ROOM**

A large dining room with a feature fireplace and two sets of French doors with one set leading out to the rear garden.

**KITCHEN**

A fully fitted kitchen with ample worktop and storage space as well as dual aspect windows to the front and rear elevations.

**W.C.**

A white two-piece suite comprising wash-hand basin and W.C.

**FIRST FLOOR**

**BEDROOM ONE**

A spacious double bedroom with a feature fireplace and dual aspect windows to the front and rear elevations.

**EN-SUITE**

The expansive en-suite provides a four-piece suite comprising bath, shower, two wash-hand basins and W.C.

**BEDROOM TWO**

A double bedroom with two windows to the rear aspect.

**BATHROOM**

A white three-piece suite comprising bath, wash-hand basin and W.C.

**SECOND FLOOR**

**BEDROOM THREE**

A double bedroom with a feature fireplace, fitted wardrobes and views to the front elevation.

**BEDROOM FOUR**

A double bedroom with a feature fireplace and views to the front elevation.

**BEDROOM FIVE**

A double bedroom with views to the rear aspect.

**JACK AND JILL EN-SUITE/ BATHROOM**

A white three-piece suite equipped with toilet, hand wash basin and bath facilities with a hand held shower fitting.

**BEDROOM SIX**

Another double bedroom with views to the rear elevation.

**SHOWER ROOM**

**CELLAR**

The cellar provides further storage space.

**GARDEN**

The house is set within an acre plot with beautiful views as well as a garden to the rear and side of the property with a patio area perfect for entertaining or relaxing.

**OUTBUILDING**

The outbuilding is currently being used as a bar and is a versatile space.

**LOCAL AUTHORITY**

Shropshire Council.

**COUNCIL TAX BAND**

Council Tax Band C.

**POSSESSION AND TENURE**

Freehold with vacant possession on completion.

**VIEWINGS**

Strictly by appointment with the selling agent.

**ANTI-MONEY LAUNDERING (AML) CHECKS**

We are legally obligated to undertake anti-money laundering checks on all property purchasers. Whilst we are responsible for ensuring that these checks, and any ongoing monitoring, are conducted properly; the initial checks will be handled on our behalf by a specialist company, Movebutler, who will reach out to you once your offer has been accepted. The charge for these checks is £30 (including VAT) per purchaser, which covers the necessary data collection and any manual checks or monitoring that may be required. This cost must be paid in advance, directly to Movebutler, before a memorandum of sale can be issued, and is non-refundable. We thank you for your cooperation.