



The Picket Mead Development

Newton, SA3 4TR

Price £1,100,000

PLOT ONE

A small, carefully crafted development of contemporary detached homes, offering generous accommodation, refined design and modern living in a private setting.

- Exclusive development of just a handful of contemporary detached homes
- Generous accommodation extending to 2,841 sqft
- High-quality construction with a 10-year new home warranty
- Architect-designed with strong emphasis on light, space and modern living

Viewing

Please contact our The Greenroom Office on 01792 986 099 if you wish to arrange a viewing appointment for this property or require further information.



4



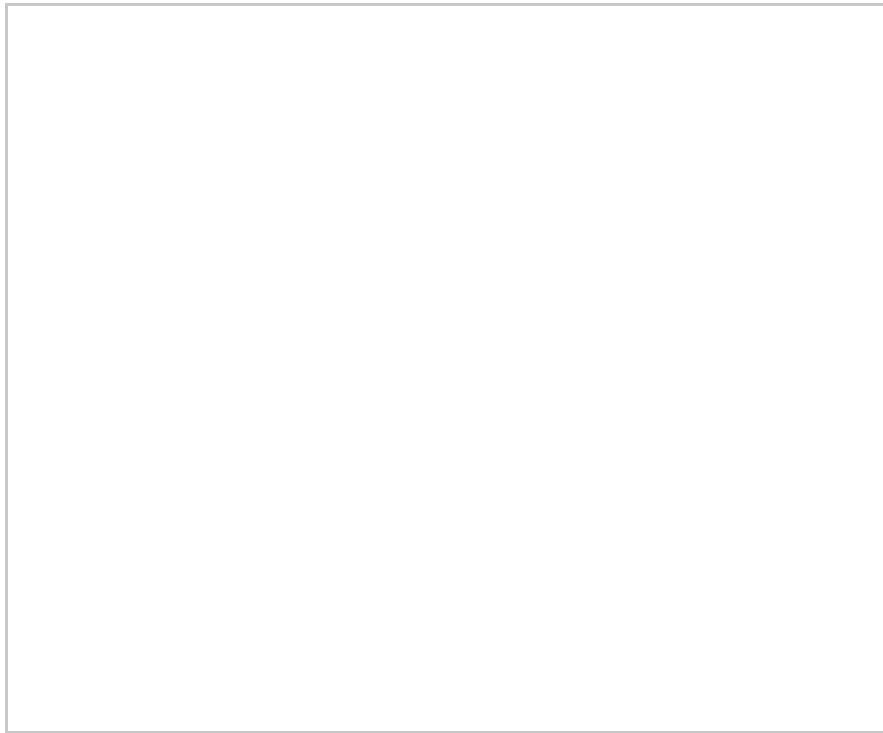
3



2



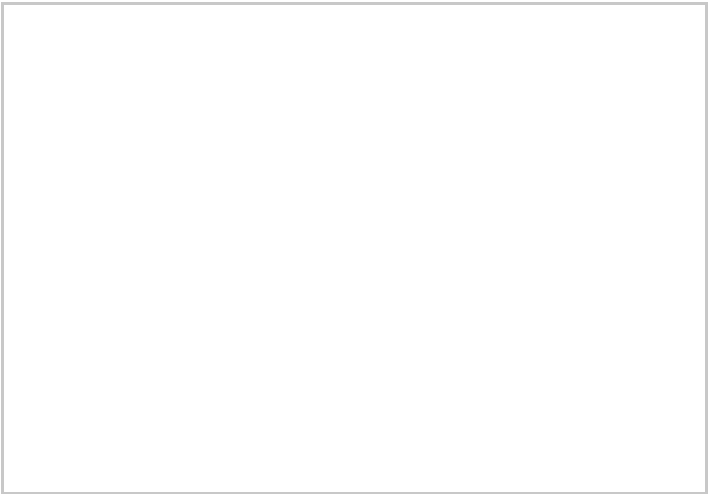
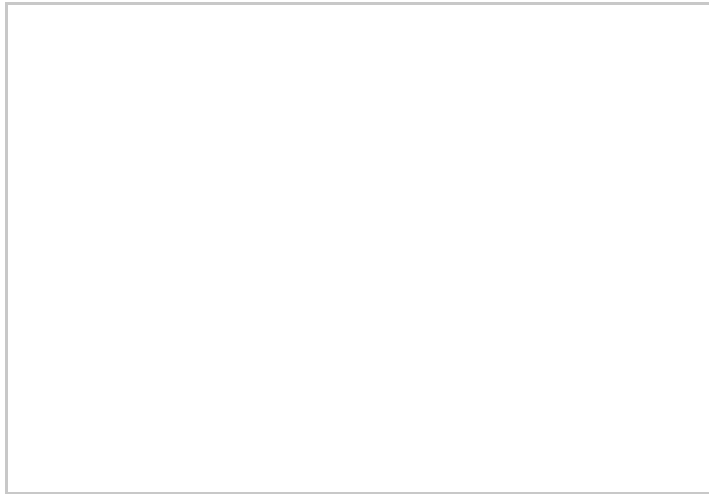
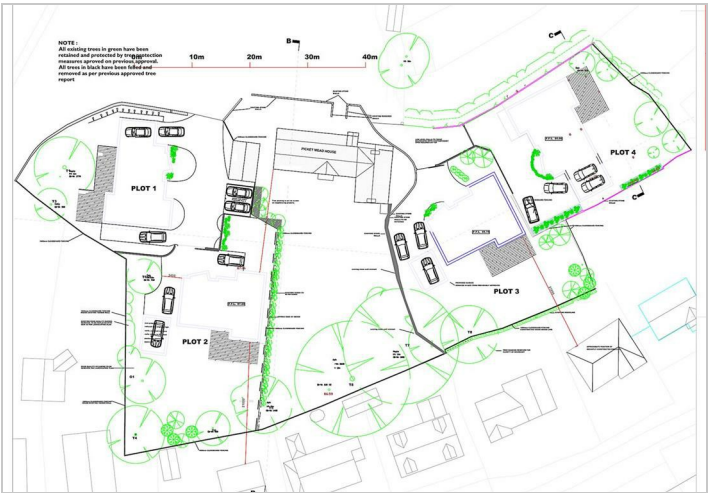
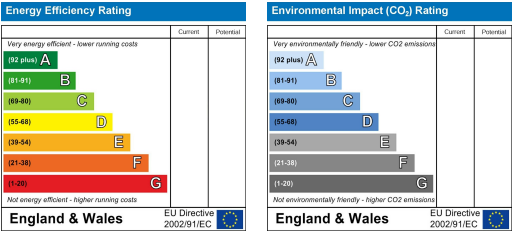
Floor Plan



Area Map



Energy Efficiency Graph



These particulars, whilst believed to be accurate are set out as a general outline only for guidance and do not constitute any part of an offer or contract. Intending purchasers should not rely on them as statements of representation of fact, but must satisfy themselves by inspection or otherwise as to their accuracy. No person in this firm's employment has the authority to make or give any representation or warranty in respect of the property.

Gower House, 28-30 Dunns Lane, Mumbles, SA3 4AA

T: 01792 986099

E: info@thegreenroomhomes.com

www.thegreenroomhomes.com

Registered office: 31 Pwlldu Lane, Bishopston, SA3 3HA