



Neville Court

Abbey Road, NW8

Asking Price £650,000

Sole Agent. A spacious 1 bedroom apartment of approximately (619 sq. ft. / 57 sq. m.) situated on the 4th floor of this popular period building located minutes from St John's Wood Underground Station (Jubilee line).

The accommodation comprises of a 19' reception room, kitchen/breakfast room, bedroom with balcony and bathroom. Further benefits include portorage and lift.

Neville Court is located at the corner of Abbey Road and Grove End Road close to the famous Abbey Road Studios. St John's Wood High Street with its selection of boutiques, cafes and eateries, Regent's Park and Lord's Cricket Ground are all within walking distance.



Neville Court

Abbey Road, NW8

- One Bedroom Apartment
- Leasehold
- 619 sq. ft.
- Porter
- Lift
- Balcony



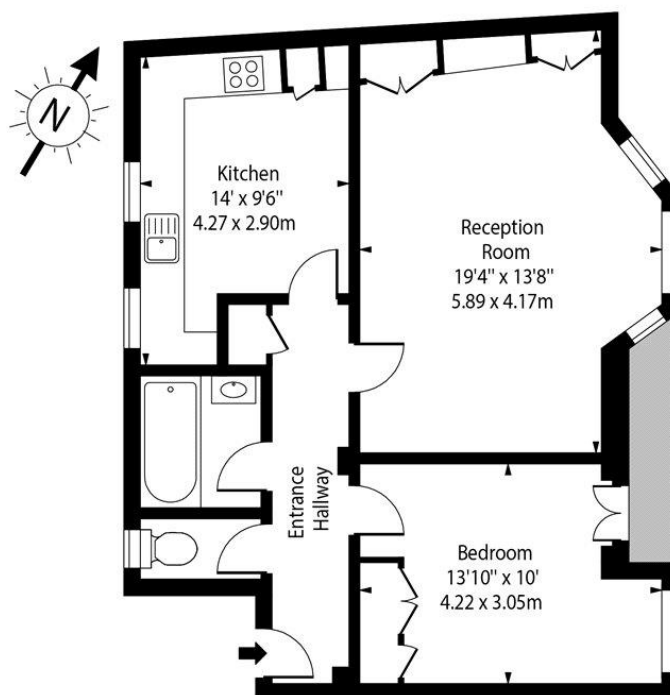
Tenure: Leasehold
Service Charge: £4,376.44pa
Ground Rent: £100pa
Local Authority: Westminster
Council Tax Band: D

Energy Efficiency Rating		
	Current	Potential
Very energy efficient - lower running costs		
A (91-100)		
B (81-90)		
C (69-80)	76	80
D (55-68)		
E (39-54)		
F (21-38)		
G (1-20)		
Not energy efficient - higher running costs		
England, Scotland & Wales		EU Directive 2002/91/EC

Chestertons St John's Wood Sales

122 St John's Wood High Street
London
NW8 7SG
stjohnswood@chestertons.co.uk
020 3040 8611
chestertons.co.uk

Neville Court,
Abbey Road, NW8



Fourth Floor

Approx Gross Internal Area 619 Sq Ft - 57.51 Sq M

For Illustration Purposes Only - Not To Scale Floor Plan by www.epixandplans.com Ref: No.43792

This floor plan should be used as a general outline for guidance only. Any intending purchaser or lessee should satisfy themselves by inspection, searches, enquiries and full survey as to the correctness of each statement. Any areas, measurements or distances quoted are approximate and should not be used to value a property or be the basis of any sale or let.

