



**first for homes**  
first for property in fife - [firstforhomes.co.uk](http://firstforhomes.co.uk)  
**FOR SALE**  
01592 752 944  
[firstforhomes.co.uk](http://firstforhomes.co.uk)

**Hollytree House, Star of Markinch**  
**Offers over £335,000**

 *Premium Property*

# , Star of Markinch



Beautiful Bright & Spacious 5 Bed Detached Family Villa with Double Garage. Wonderful wrap around gardens and Stunning views over countryside and Falkland Hill! Situated Within The Quaint Village of Star of Markinch!

Allan England's award winning team at first for homes are proud to welcome to the market this lovely 5 bed Detached Family Villa situated within the highly sought-after Village of Star. The property offers generous, versatile family living space comprising on the ground floor level: entrance vestibule, welcoming entrance hall, spacious family lounge, additional family room, breakfasting kitchen with integrated appliances, utility room, dining room/bedroom 5, cloaks/WC. The upper level offers a master bedroom with en-suite shower room, large walk-in wardrobe., 3 further bedrooms (2 with walk-in wardrobes).Stunning views from every window. Large Storage cupboard on upper hallway. Family bathroom with bath, over head shower. Outside, the property enjoys beautiful open countryside views, with iron gates leading to a 3-car chipped driveway. Double detached garage and wrap around gardens to the property, lovely matured plants, trees and shrubs. Further benefits include a new boiler installed in 2024 and a stylish new composite front door.Viewing is highly recommended to fully appreciate everything this fantastic family home has to offer. Don't miss out – Call First For Homes today!!

HOME REPORT VALUE £350,000

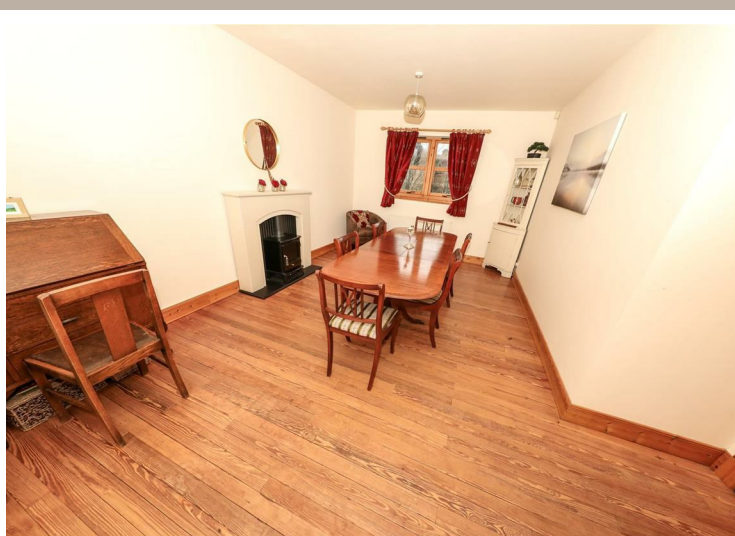
EPC RATING C

COUNCIL TAX BAND F

First for homes - First for trust... first for service... first for aftercare!

**SITUATION** - The popular Village of Star, by Markinch is approximately 2 miles North of the New Town of Glenrothes. Star itself boasts its own primary school, a variety of golf courses in the area including an 18-hole course at the renowned Balbirnie Park Golf Course and St Andrews with its championship courses is only 21 miles away. All other facilities can be found in nearby Glenrothes.





**SITUATION - Star**

**ENTRANCE VESTIBULE**

**ENTRANCE HALL**

**DINING ROOM / BEDROOM 5**  
16'9" x 10'9" approx. (5.13m x 3.28m approx.)

**BREAKFASTING KITCHEN**  
14'2" x 10'6" approx. (4.34m x 3.21m approx.)

**CLOAKS / WC**

**FAMILY LOUNGE**  
20'1" x 16'10" approx. (6.14m x 5.15m approx.)

**UPPER LEVEL**

**MASTER BEDROOM** 17'10" x 15'8" (5.44m x 4.78)

**EN-SUITE SHOWER**  
6'0" x 6'0" approx. (1.84m x 1.83m approx.)

**BEDROOM 2**  
15'8" x 10'9" approx. (4.78m x 3.28m approx.)

**BEDROOM 3**  
14'0" x 10'10" approx. (4.28m x 3.32m approx.)

**BEDROOM 4** 7'6" x 7'4" approx. (2.29 x 2.26m approx.)

**FAMILY BATHROOM**  
9'7" x 5'7" approx. (2.93m x 1.71m approx.)

**DOUBLE GARAGE**  
18'8" x 18'8" approx. (5.70m x 5.71m approx.)

**3-CAR DRIVEWAY**

**COUNTRYSIDE VIEWS**

**GARDENS TO THE FRONT, SIDE & REAR**

**INFORMATION**





## Information

These particulars are prepared on the basis of information provided by our clients. We have not tested the electrical system or any electrical appliances, nor where applicable, any central heating system. All sizes are recorded by electronic tape measurement to give an indicative, approximate size only. Prospective purchasers should make their own enquiries – no warranty is given or implied. This schedule is not intended to, and does not form any contract.

## FREE Valuation

### Selling Your Home?

Choose first for homes - a highly experienced estate agency team you can trust to sell your home at the highest possible price. Offering fantastic savings on selling fees, with no compromise on service, free professional photography highlighting your home in its best light, first for homes will be your first choice. Contact us today to arrange your appointment.

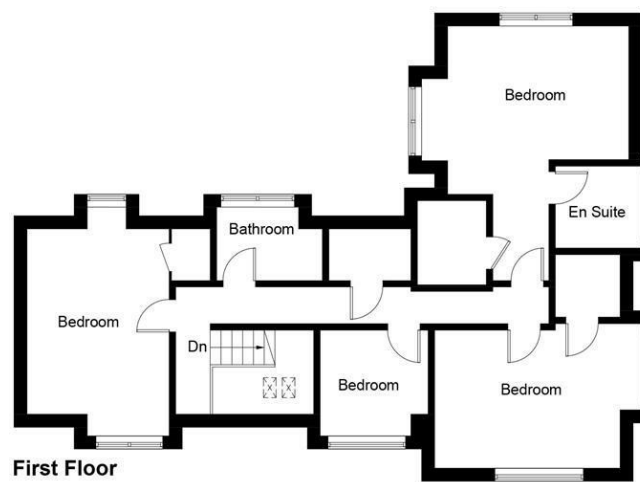
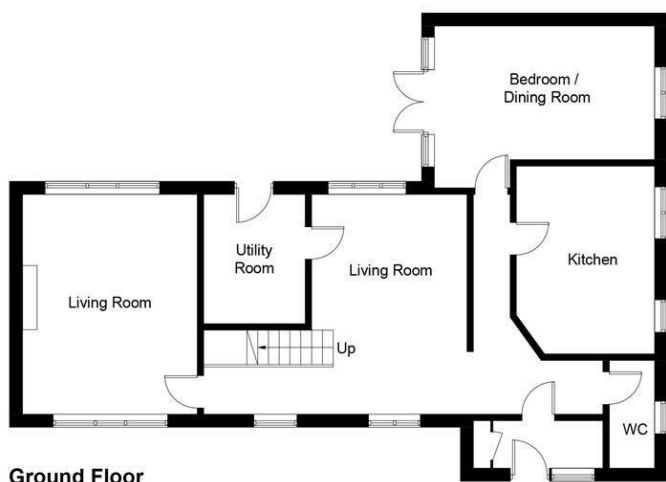


Illustration for identification purposes only, measurements are approximate, not to scale. Fourlabs.co © (ID1281481)