



# Heath Street

London, NW3

£6,500 per month  
(£1,500 per week)

Superbly located on Heath Street in Hampstead Village, a 4 bedroom upper duplex apartment offering over 1,300 square feet of internal accommodation with the addition of a large south facing terrace with far reaching views across London. The accommodation comprises; bright reception room, kitchen, master bedroom with en-suite bathroom and dressing room, 3 further bedrooms, and a shower room. With breath-taking views, this 4 bedroom/2 bathroom flat stands out in the current market.

**CHESTERTONS**



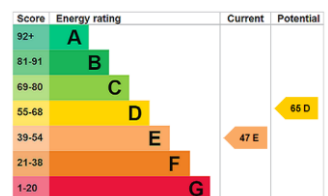
# Heath Street

## London, NW3

- Four Bedrooms
- Prime Hampstead Village Location
- High Spec Finish
- South Facing Roof Terrace
- Newly Decorated



**Deposit Required:** £9,000.00  
**Local Authority:** London Borough Of Camden  
**Council Tax Band:** F  
**EPC Rating:** E  
**Part Furnished**



### *Chestertons Hampstead Lettings*

55-56 Hampstead High Street  
 Hampstead  
 London  
 NW3 1QH  
 hampsteadlettingsusers@chestertons.co.uk  
 02077941125  
 chestertons.co.uk

Additional tenant charges apply (fees apply to non-AST tenancies only)  
 Tenancy Agreement Fee: £300  
 References per Tenant/Guarantor: £60  
 Inventory check (approx. £100 – £250 inc. VAT)  
[chestertons.co.uk/property-to-rent/applicable-fees](http://chestertons.co.uk/property-to-rent/applicable-fees)

# Heath Street, London, NW3

Approximate Gross Internal Floor Area = 124.0 sq m / 1335 sq ft

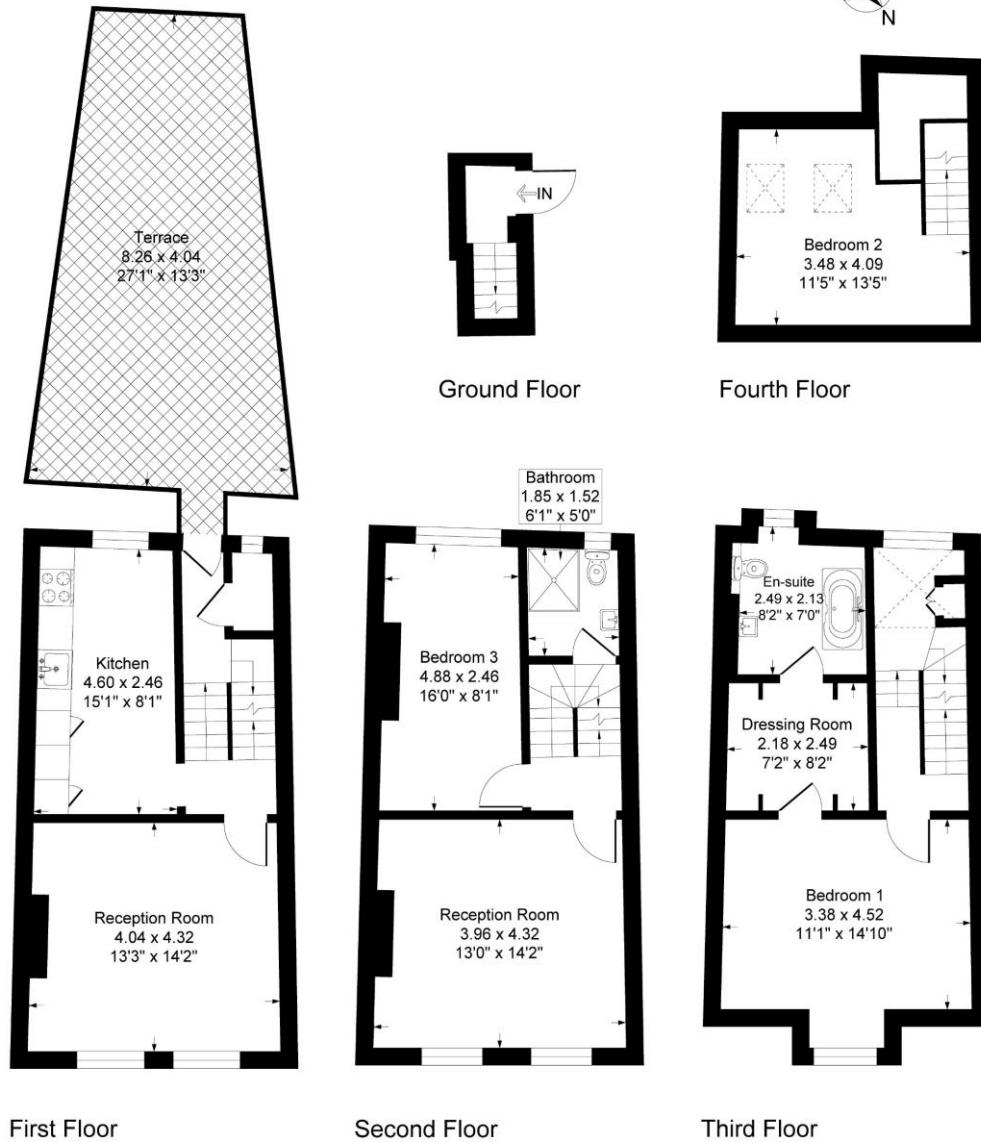


Illustration for identification purposes only, measurements are approximate, not to scale.