



TABOR GROVE, SW19

£2,950 per month

Two double bedrooms
Two bathrooms
Modern
Fitted wardrobes
Large private terrace
Energy rating: b

@marshandparsons
marshandparsons.co.uk

MARSH &
PARSONS



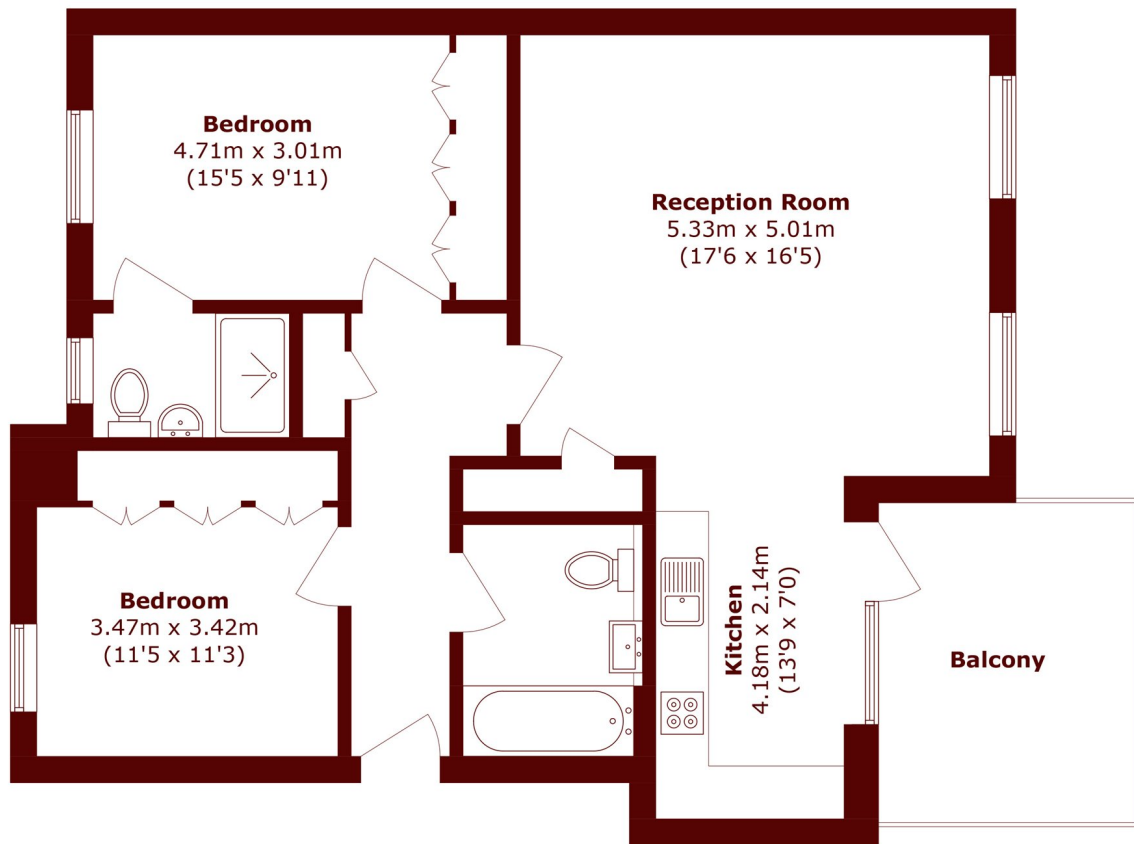
ABOUT THE PROPERTY

A two double bedroom, two bathroom built to a high specification offering a spacious lounge, modern fitted kitchen, spacious fitted wardrobes, en-suite walk-in shower to master, family bathroom with bath and shower over and a large private terrace.

The apartment located within a sought after cul-de-sac close to Wimbledon town centre.



STEP INSIDE TABOR GROVE



Total area (approx.): 82.2 sq. m (884.8 sq. ft)

Balcony area (approx.): 10.6 sq. m (114.1 sq. ft)

Wimbledon
020 8879 6661

Energy Rating: B We aim to make our particulars both accurate and reliable. However, they are not guaranteed; nor do they form part of an offer or contract. If you require clarification on any points then please contact us, especially if you're traveling some distance to view. Please note that appliances and heating systems have not been tested and therefore no warranties can be given as to their good working order

MARSH &
PARSONS