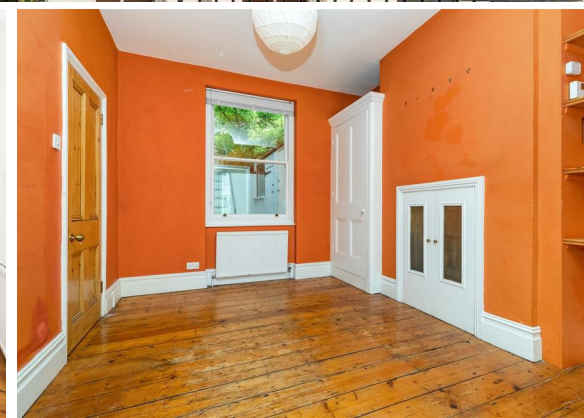




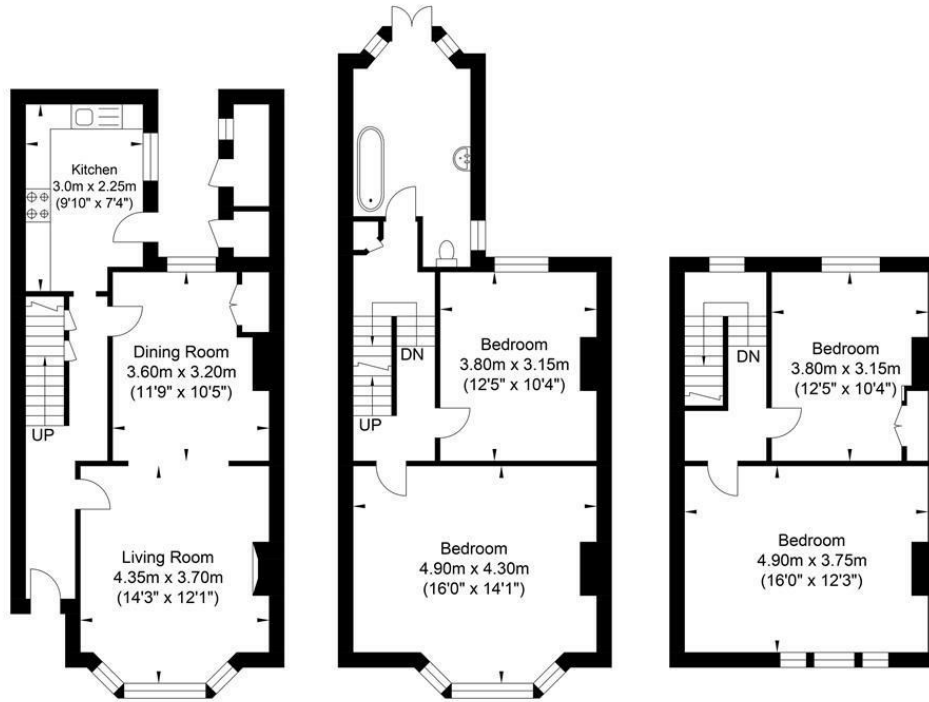
**4 Bed
House - Terraced
located in**

£700,000



Roundhill Crescent, Brighton

DIRECTIONS



Ground Floor
Approximate Floor Area
526.78 sq ft
(48.94 sq m)

First Floor
Approximate Floor Area
516.56 sq ft
(47.99 sq m)

Second Floor
Approximate Floor Area
403.43 sq ft
(37.48 sq m)

Approximate Gross Internal Area = 134.41 sq m / 1446.77 sq ft
Illustration for identification purposes only, measurements are approximate, not to scale.

CONTACT

Kendrick Property Services - Brighton
10-12 Lewes Road
Brighton
East Sussex
BN2 3HP

E:
sales@kendrickpropertyservices.co.uk
T: 01273 600162
www.kendrickpropertyservices.co.uk

