

29 Kensington Road, Chorlton, Manchester, M21 9GH



JP & Brimelow
ESTATE AGENTS



 3  1  2  D

VIDEO TOUR AVAILABLE A charming & beautifully presented, THREE DOUBLE BEDROOM, mid-terrace property. Located on a highly sought-after residential Road in Chorlton off Manchester Road.

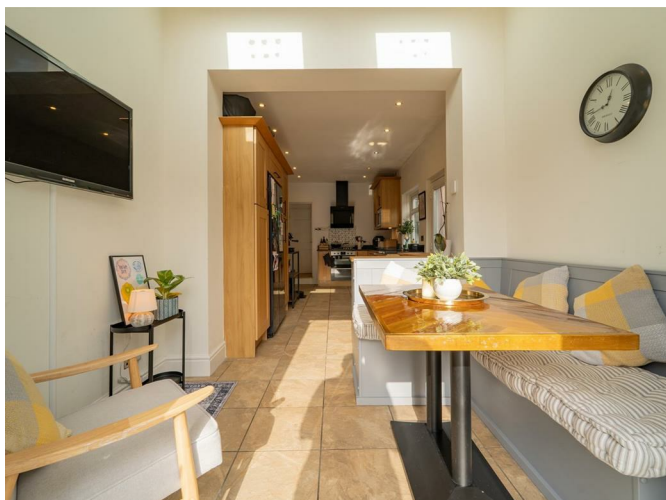
Within easy walking distance to Chorlton centre, Longford Park, several outstanding local primary schools and a variety of shops, restaurants, cafes, and delis along Manchester Road.

This bay fronted property is spread over two floors and in brief consist of, a welcoming entrance hall, a delightful lounge to the front aspect complete with bay window, a good sized dining room, a useful under stairs storage cupboard, a fitted kitchen/ dining area that has views and access out into the rear SOUTH facing garden.

Stairs leading to the first-floor landing reveals three double bedrooms, and a white three-piece bathroom suite.


The property benefits from gas fired central heating, high ceilings, ceiling coving and picture rails, an alarm system, an enclosed rear garden, and an EV charge point.

£485,000





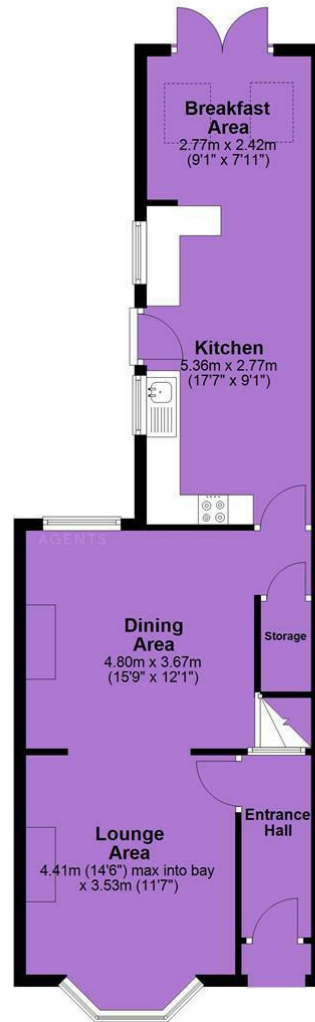
EPC Chart

Energy Efficiency Rating		Current	Potential
Very energy efficient - lower running costs			
(92 plus) A			86
(81-91) B			
(69-80) C			
(55-68) D		61	
(39-54) E			
(21-38) F			
(1-20) G			
Not energy efficient - higher running costs			
England & Wales		EU Directive 2002/91/EC 	



Tenure: Freehold Council Tax Band: B

Ground Floor



First Floor



JP & Brimelow Estate Agents Ltd
 430 Barlow Moor Road, Manchester, M21 8AD
 Tel: 0161 8822233
 E: sales@jpbrimelow.co.uk www.jpandbrimelow.co.uk



JP & Brimelow
 ESTATE AGENTS

NOTICE: JP & Brimelow Estate Agents Ltd for themselves and for the vendors or lessors of this property whose agents they give notice that:

- (i) the particulars are set out as a general outline only for the guidance of intending purchasers or lessees, and do not constitute, nor constitute part of, an offer or contract;
- (ii) all descriptions, dimensions, references to the condition and necessary permissions for use and occupation, and other details are given in good faith and are believed to be correct but any intending purchasers or tenants should not rely on them as statements or representations of fact but must satisfy themselves by inspection or otherwise as to the correctness of each of them;
- (iii) no person in the employment of JP & Brimelow Estate Agents Ltd has any authority to make or give any representation or warranty whatever in relation to this property.

@jpandbrimelowstateagents

@jpandbrimelow

