



Guide Price
£180,000

Leasehold

1x  1x  1x 

**Lucas Court, Waltham
Abbey, Essex, EN9**

OVER 60?

Secure this property
for up to **59% less!**

 **DOUGLAS
ALLEN**
Helping you move forwards



Main features

- First floor flat
- Being sold chain free
- Close to local amenities
- Long lease
- Popular location
- Views over open spaces

Accommodation

FIRST FLOOR

Entrance Hallway

Lounge/Dining Room : 16'1 x 10'0 (4.91m x 3.05m)

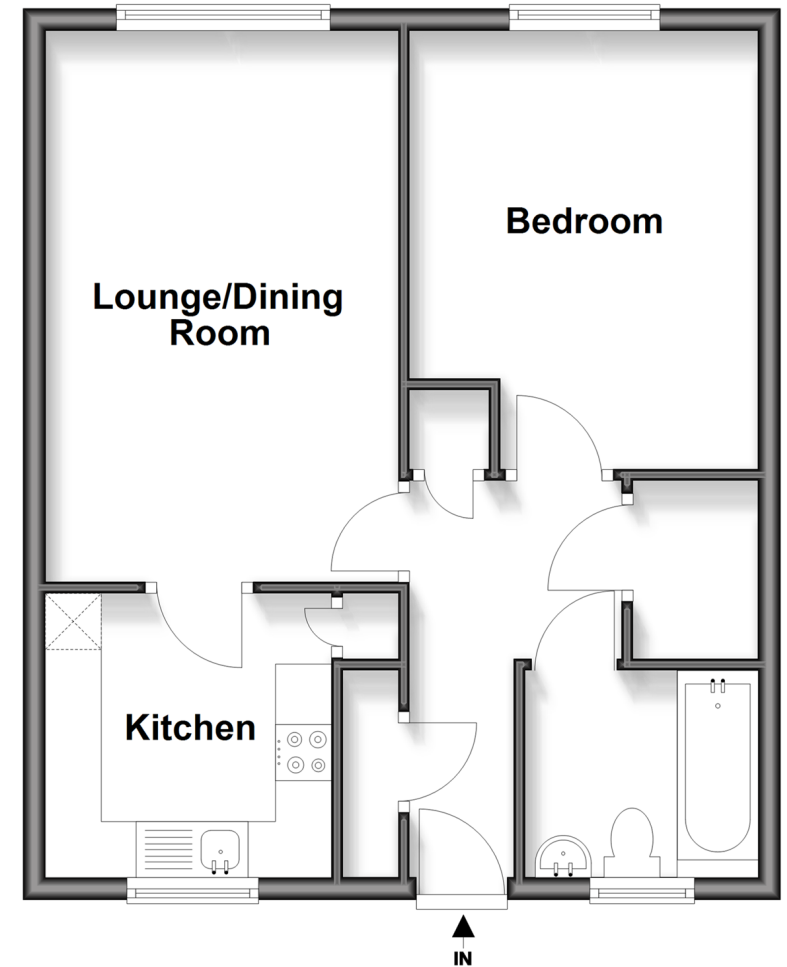
Kitchen : 8'1 x 8'0 (2.47m x 2.44m)

Bathroom

Bedroom : 13'0 x 10'0 (3.97m x 3.05m)

First Floor

Approx. 48.1 sq. metres (518.2 sq. feet)



Call Epping - 01992 560600 ■ douglasallen.co.uk

- Legal advice should be taken to verify fixtures/fittings, planning, alterations and/or lease details
- Appliances & services are untested, dimensions are approximate and floor plans are not to scale
- Through a Homewise Home For Life Plan people aged 60+ can secure this property for up to 59% less, by purchasing a Lifetime Lease



51509344/20260128/LA/MS