



Watermans Quay  
William Morris Way, SW6

CHESTERTONS





A beautiful penthouse apartment with stunning views across London and the River Thames. Situated on the 9th floor with private landing offering 2100 square feet of accommodation.

Residents of Regent on the River benefit from a first class concierge service, gated security and in this instance 2 underground parking spaces

Watermans Quay is located on the banks of the River Thames with beautiful views of London. Imperial Wharf rail station (Overground) is within a 10 min walk providing quick links to Clapham Junction, West Brompton (District line) and Shepherds Bush (Central line). The property is also within close proximity to the luxurious Thames Clipper riverboat service, which takes you directly into the City in under 30 mins and onto Canary Wharf. The shops and restaurants on the stylish King's Road are also only a short walk away.

- Penthouse with river views
- Air conditioner throughout
- Italian marble and bespoke kitchen and joinery
- Two secure parking space
- 3 bedrooms, 3 bathrooms

Asking Price £1,950,000

Score	Energy rating	Current	Potential
92+	A		
81-91	B		
69-80	C	73 C	76 C
55-68	D		
39-54	E		
21-38	F		
1-20	G		

**Tenure:** Leasehold 899 years 3 months

**Service Charge:** £12,600 p.a. includes heating, water and hot water

**Local Authority:** Hammersmith and Fulham

**Council Tax Band:** G

*Chestertons Parsons Green Sales*

78 New Kings Road

London

SW6 4LT

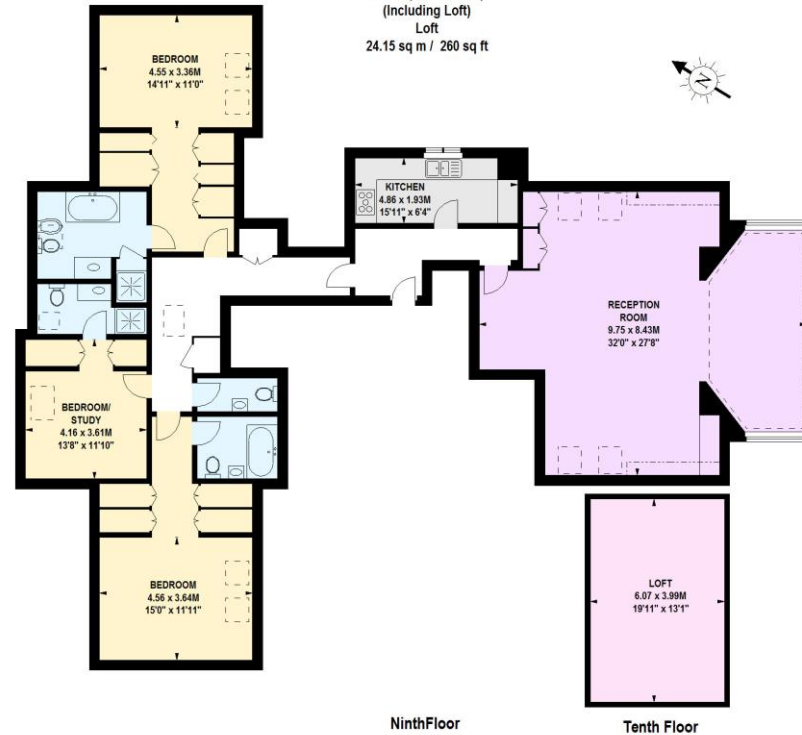
fulham@chestertons.co.uk

020 7731 4448

chestertons.co.uk

### Watermans Quay, SW6

Approximate gross internal area  
215.16 sq m / 2316 sq ft  
(Including Loft)  
Loft  
24.15 sq m / 260 sq ft



This floor plan is a representation for guidance purposes only, not for valuation.  
Any figure is approximate and must not be relied on as a statement of fact.  
Copyright of Wyatt Dixon Homes

Chesterton UK Services Limited trading as Chestertons for themselves and for the vendor of this property whose agents they are, give notice that (i) these particulars do not constitute any part of an offer or contract, (ii) all statements contained within these particulars are made without responsibility on the part of Chestertons or the vendor, (iii) whilst made in good faith, none of the statements contained within these particulars are to be relied upon as a statement or representation of fact, (iv) any intending purchasers must satisfy themselves by inspection or otherwise as to the correctness of each of the statements contained within these particulars, (v) the vendor does not make or give either Chestertons or any person in their employment any authority to make or give representation or warranty whatsoever in relation to this property. Wide angle lenses may be used. ©Copyright Chestertons | Chesterton UK Services Limited | Registered Office 5th Floor, The Lantern, 75 Hampstead Road, London, NW1 2PL Registered Company Number 05334580.



This paper is  
100% recyclable