



17 Knightley Way, Stafford, ST20 0HX

£995 Per Calendar Month

Situated in the popular village of Gnosall this house is conveniently located & within a cul-de-sac. A spacious property boasting three double bedrooms, good living accommodation, an integral garage, private rear garden & spacious parking early viewing is a must to appreciate this great house.

Hall

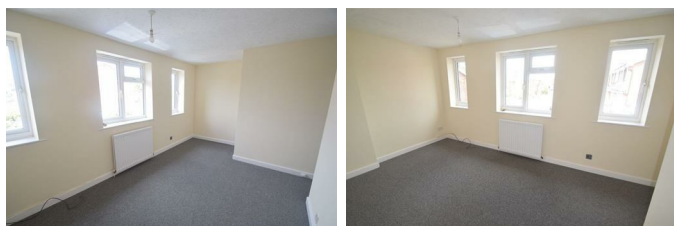
Lounge



Kitchen Diner



Bedroom One



Bedroom Two



Bedroom Three



Bathroom



Outside



The property also benefits from a private rear garden, garage and excellent parking at the front.

Agents Notes

Thank you for taking the time to show an interest in this property, if you would like further information or to request a viewing please enquire via the platform you are viewing the property on.

You will then be contacted directly via WhatsApp or text by our AI assistant. Working via this platform

will give you the fastest access to ask further details about the property or to complete the qualification process to allow you to make a viewing.

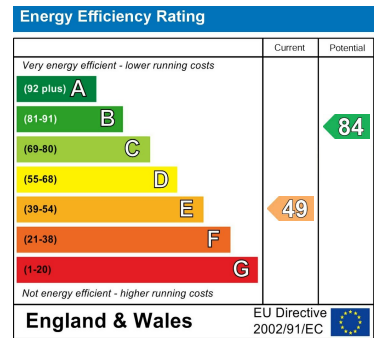
We look forward to assisting you.

Floor Plan

Area Map



Energy Efficiency Graph



These particulars, whilst believed to be accurate are set out as a general outline only for guidance and do not constitute any part of an offer or contract. Intending purchasers should not rely on them as statements of representation of fact, but must satisfy themselves by inspection or otherwise as to their accuracy. No person in this firm's employment has the authority to make or give any representation or warranty in respect of the property.