



Living
made
better

Gateway Tower
Royal Victoria Dock, E16 1YN



Offers In The Region Of £575,000

Gateway Tower, Royal Victoria Dock, E16 1YN

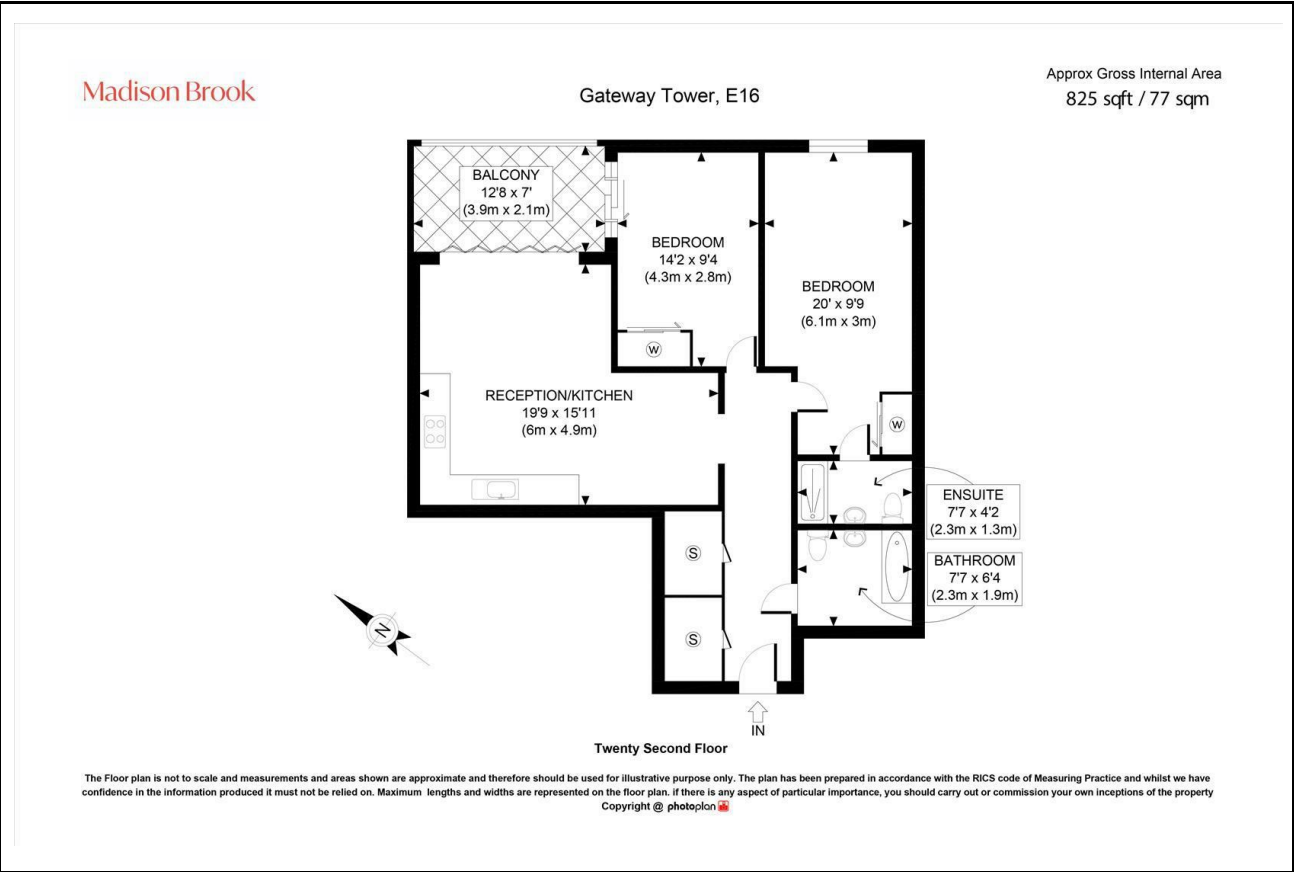
Madison Brook

Property Summary

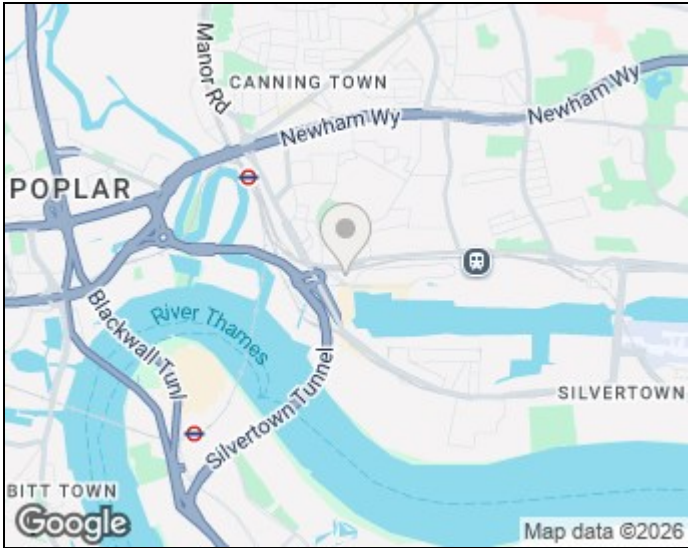
A well-presented two bedroom, two bathroom apartment situated on the twenty-second floor of Gateway Tower, E16. The property offers approximately 825 sq ft of internal accommodation, comprising an open-plan reception/kitchen, two generous double bedrooms and two modern bathrooms, including an en suite to the principal bedroom. Further benefits include an internal balcony with views towards the River Thames, 24-hour concierge service and excellent transport links via the Elizabeth line, Canning Town Underground and Royal Victoria DLR.

Service charge: £4,892.88 pa | Ground rent: £400 pa | Lease: 167 years remaining

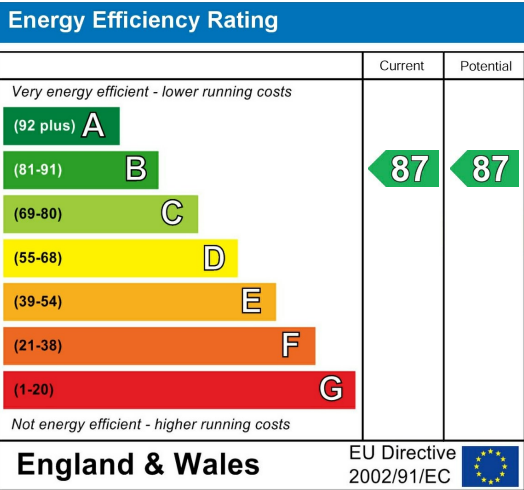
Floorplan



Area Map



Energy Efficiency Graph



These particulars, whilst believed to be accurate are set out as a general outline only for guidance and do not constitute any part of an offer or contract. Intending purchasers should not rely on them as statements of representation of fact, but must satisfy themselves by inspection or otherwise as to their accuracy. No person in this firm's employment has the authority to make or give any representation or warranty in respect of the property.

Unit B 20 Western Gateway, Royal Victoria
Dock, London, E16 1BS
Tel: 020 3946 6000 Email:
docklands@madisonbrook.com
<https://madisonbrook.com/>