






HOMES BY VICTORIA
ESTATE AGENCY

Johns Close, Studley, B80 7EQ

Offers Over £480,000

 4  2  2



Welcome to Johns Close, a superbly proportioned four-bedroom detached home, perfectly positioned within a quiet cul-de-sac in the highly sought-after village of Studley, Warwickshire. Offering generous and versatile accommodation throughout, this is an ideal purchase for a growing family seeking space, privacy and a beautiful south-facing garden.

[homesbyvictoria.co.uk](https://www.homesbyvictoria.co.uk)

victoria@homesbyvictoria | 07833 136521

FOR M HOMES MIDLANDS LIMITED trading as Homes By Victoria Company Number: 13688840 VAT no: 470190115



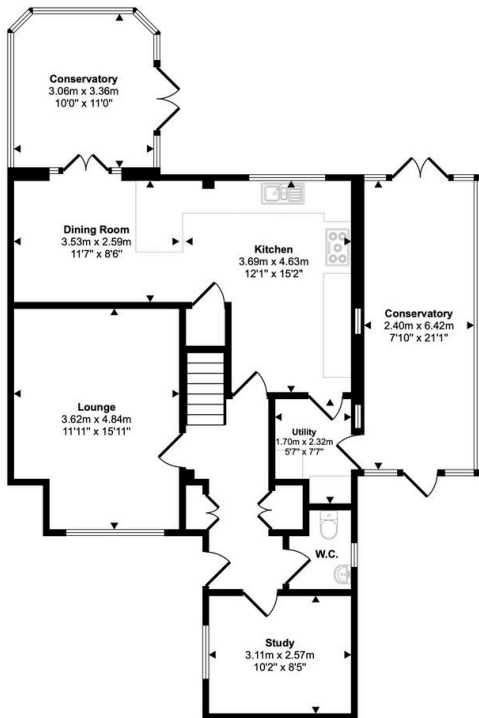
HOMES BY VICTORIA
ESTATE AGENCY



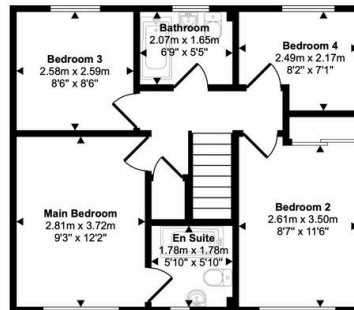
Key Features

- LOCATED IN THE SOUGHT AFTER LOCATION OF STUDLEY
- DETACHED FAMILY HOME
- TWO CONSERVATORIES
- FAMILY BATHROOM
- OFF ROAD PARKING
- SET WITHIN A QUIET CUL-DE-SAC
- LARGE KITCHEN DINER
- MASTER BEDROOM WITH EN-SUITE BATHROOM
- DELIGHTFUL SOUTH FACING GARDEN
- DOUBLE GARAGE

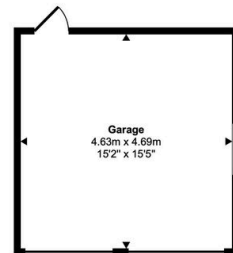
Approx Gross Internal Area
167 sq m / 1793 sq ft



Ground Floor
Approx 97 sq m / 1041 sq ft



First Floor
Approx 48 sq m / 519 sq ft



Garage
Approx 22 sq m / 234 sq ft

This floorplan is only for illustrative purposes and is not to scale. Measurements of rooms, doors, windows, and any items are approximate and no responsibility is taken for any error, omission or mis-statement. Icons of items such as bathroom suites are representations only and may not look like the real items. Made with Made Snappy 360.