



## Westferry Road, E14

£495,000

This modern 7th-floor apartment is set within a desirable riverside development and features a newly refurbished open-plan kitchen/living area opening onto a spacious south-facing balcony.

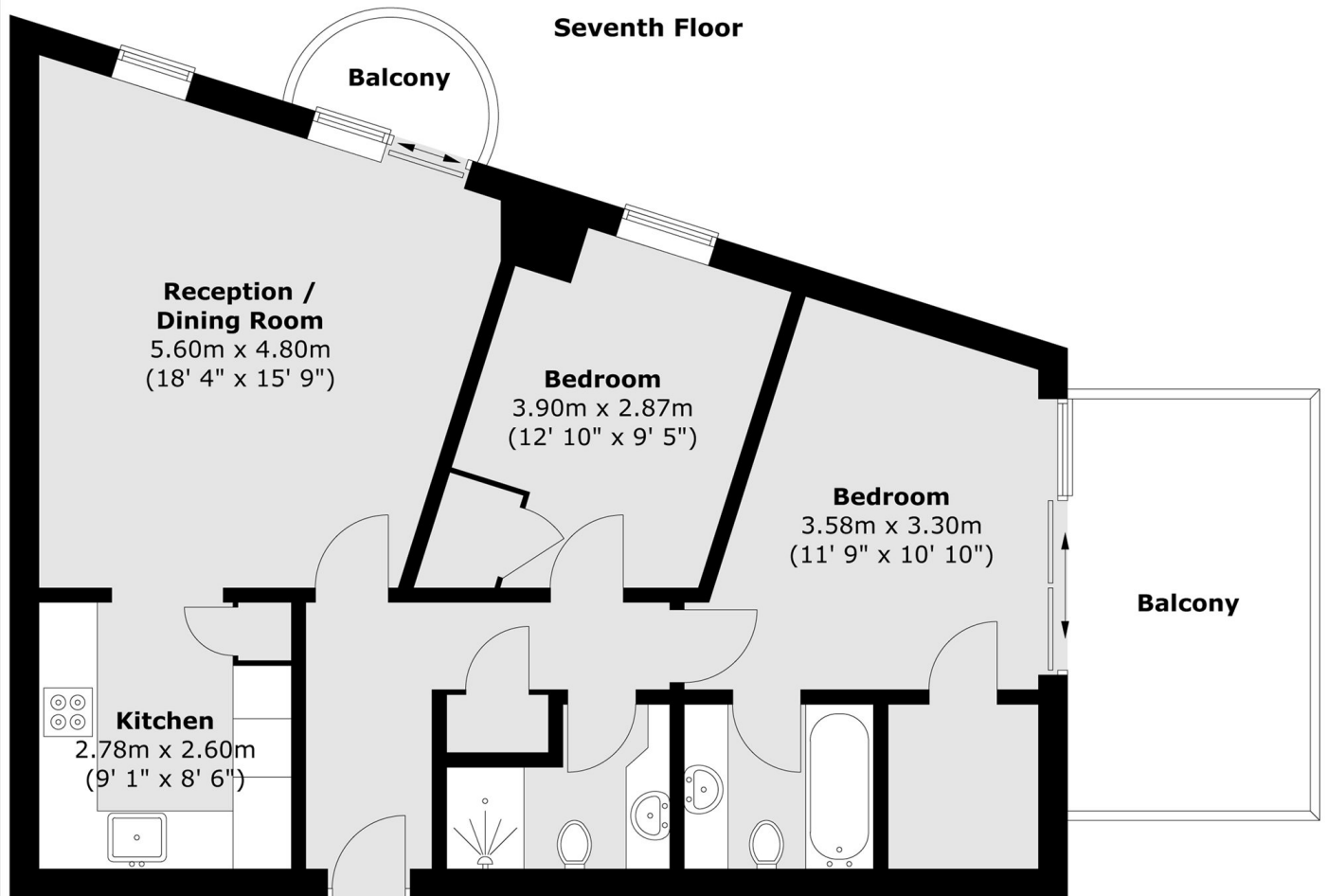
Residents benefit from a full range of on-site amenities, including a 24-hour concierge, gym, swimming pool, jacuzzi and sauna, tennis court, landscaped communal gardens and a large barbecue area.

Ideally located, the property is less than a 10-minute walk to Thames Clipper services, the DLR, Jubilee Line and Elizabeth Line, offering excellent connectivity to Canary Wharf, the City and beyond.

### Features

- Allocated Parking
- 761 Sq,Ft With Private Balcony
- Over 900 Year Lease
- 24-hour concierge
- 24 Hour Amenities
- Landscaped gardens
- £7,390 Reserve fund

# Westferry Road, London, E14



Total area (approx.) : 70.7 sq. m (761 sq. ft)  
Total balcony area (approx.) : 12.6 sq. m (136 sq. ft)