



10a Seaview Court, North Road, Poole, BH14 0LX

£200,000

- Two Double Bedrooms
- Off Road Parking
- Long Lease
- Close To Ashley Cross
- Spacious Top Floor Apartment
- Close To Transport Links
- Modern Kitchen & Bathroom
- Well Presented
- UPVC Double Glazing
- Communal Gardens

North Road, Poole BH14 0LX

SPACIOUS TWO DOUBLE BEDROOM TOP FLOOR ART DECO STYLE APARTMENT SITUATED CLOSE TO ASHLEY CROSS >>> Greys Estate Agents are pleased to offer for sale this well presented top floor apartment situated on North Road in Parkstone, Poole. The property comprises; Two double bedrooms, spacious lounge / diner, modern kitchen and bathroom. Further benefits include UPVC double glazing, modern electric heating, off road parking and communal gardens.



Council Tax Band: B

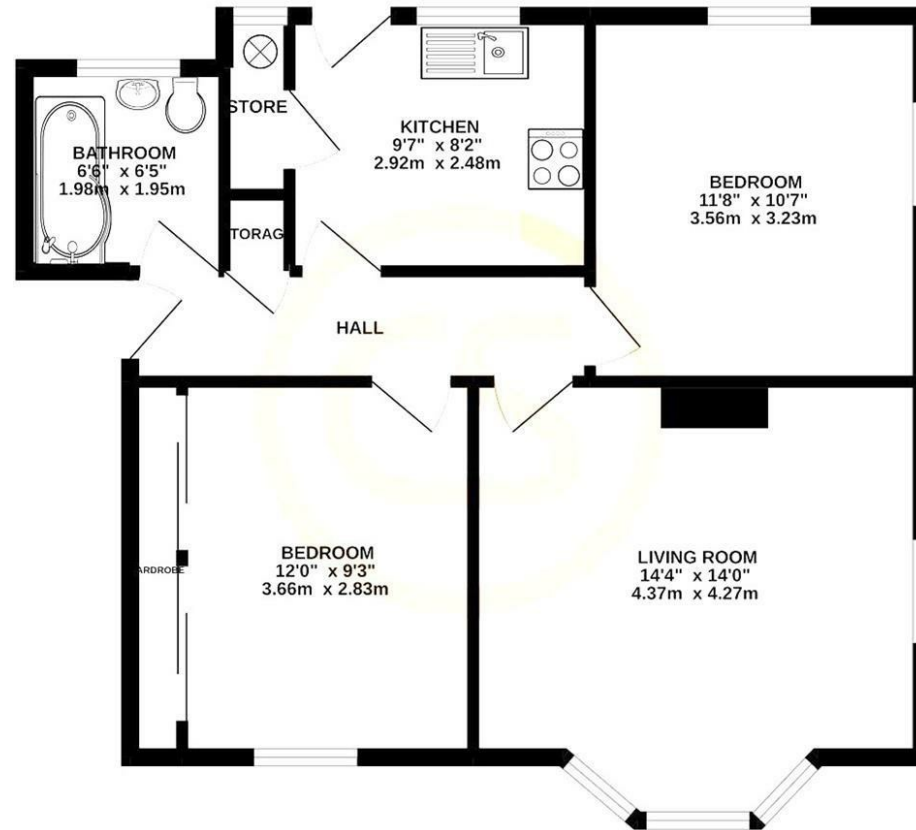


Tenure - Leasehold

There are approximately 147 years remaining in the lease and the block has the right to manage.

Service charge is approximately £1800pa

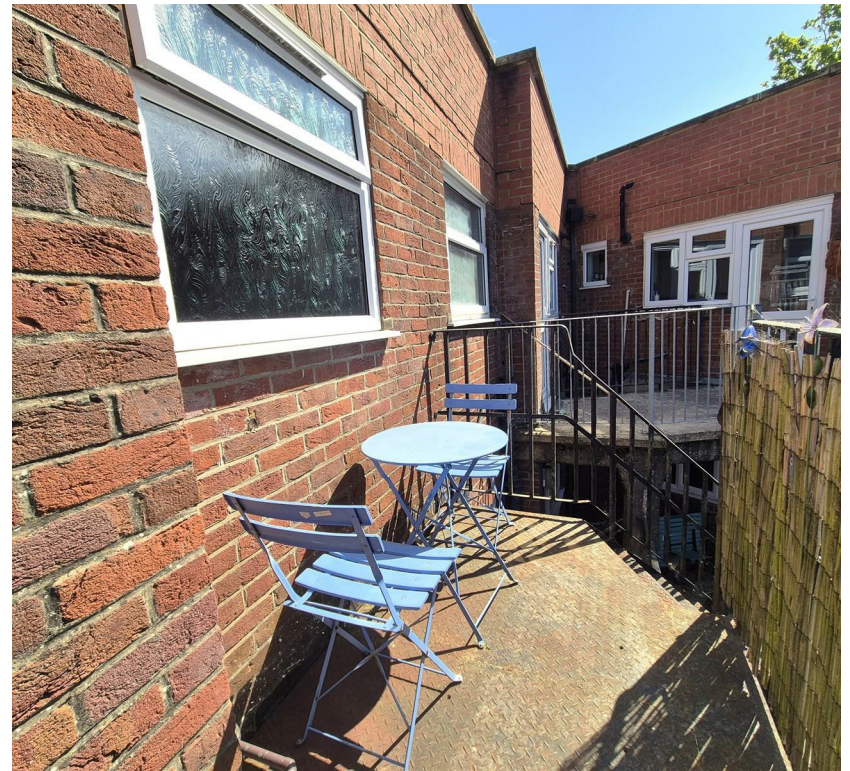
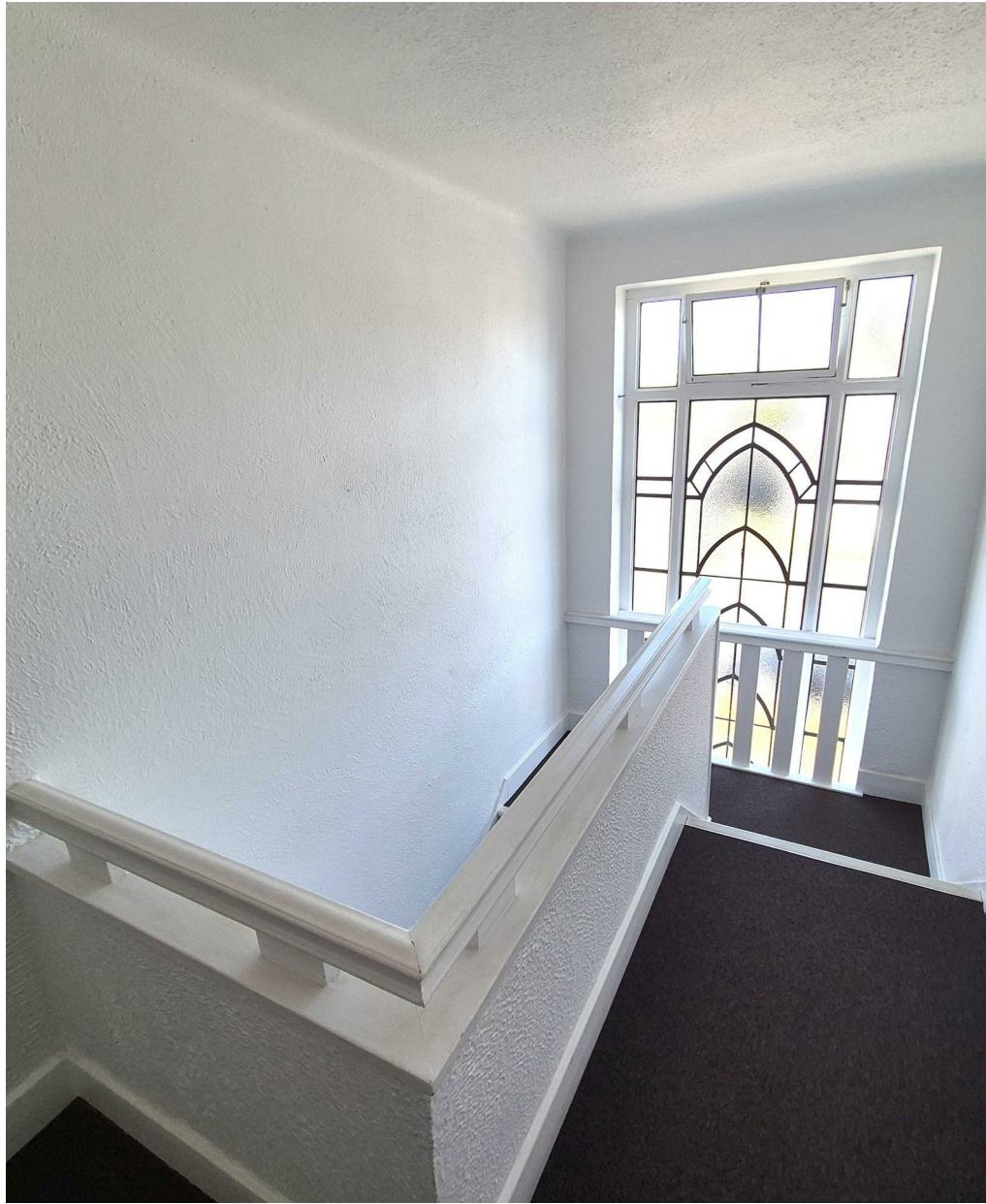
TOP FLOOR
623 sq.ft. (57.9 sq.m.) approx.

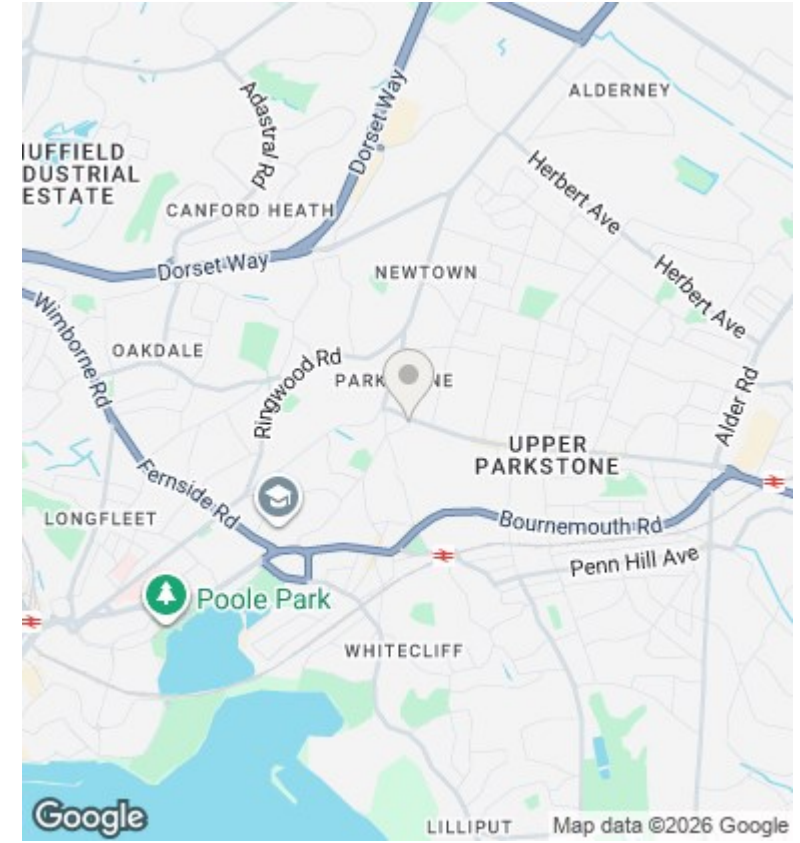


TOTAL FLOOR AREA : 623 sq.ft. (57.9 sq.m.) approx.

Whilst every attempt has been made to ensure the accuracy of the floorplan contained here, measurements of floors, windows, rooms and any other items are approximate and no responsibility is taken for any error, omission or mis-statement. This plan is for illustrative purposes only and should be used as such by any prospective purchaser. The services, systems and appliances shown have not been tested and no guarantee as to their operability or efficiency can be given.
Made with Metriplex v2022







Energy Efficiency Rating	
	Potential
Very energy efficient - lower running costs	
(92 plus) A	
(81-91) B	
(69-80) C	
(55-68) D	73
(39-54) E	61
(21-38) F	
(1-20) G	
Not energy efficient - higher running costs	
England & Wales	EU Directive 2002/91/EC

Viewings

Viewings by arrangement only. Call 01202 749390 to make an appointment.

Council Tax Band

B