

OVER 60?

Secure this property
for up to **59% less!**



Guide Price

£750,000

Freehold

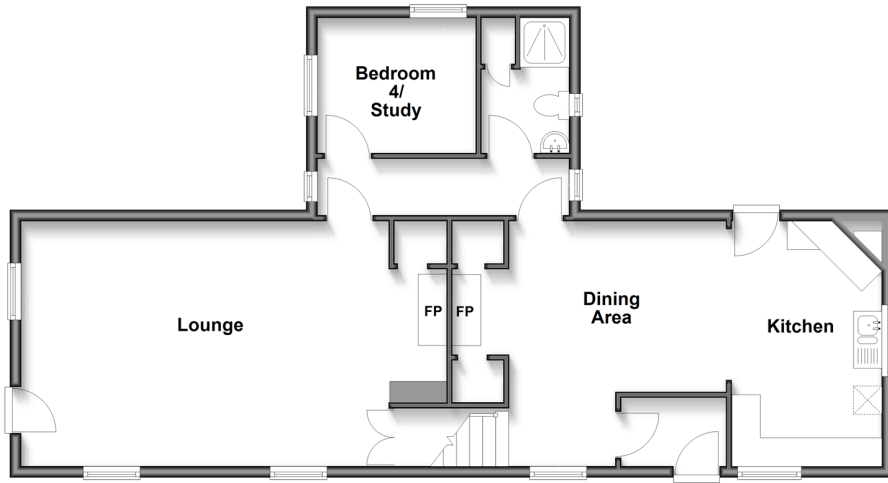
3x  2x  2x 

Oare Road, Faversham, Kent, ME13

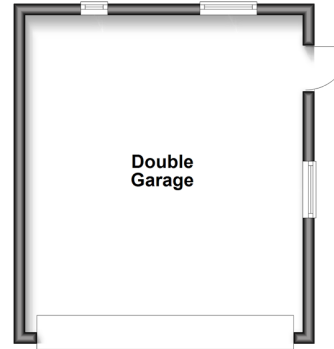
Wards

Helping you move forwards

Split Level Ground Floor
Approx. 81.0 sq. metres (871.8 sq. feet)



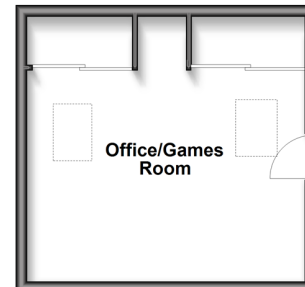
Ground Floor- Outbuilding
Approx. 27.3 sq. metres (293.7 sq. feet)



Split Level First Floor
Approx. 77.2 sq. metres (831.3 sq. feet)



First Floor-Outbuilding
Approx. 22.8 sq. metres (245.4 sq. feet)



Accommodation

GROUND FLOOR

Entrance Lobby

Lounge: 21'10 x 14'10 (6.66m x 4.52m)

Kitchen/Dining Area: 20'6 (6.25m) narrowing to 9'11 at narrowest point (3.02m) x 14'10 (4.52m)

Inner Hall

Bedroom 4/Study: 8'9 x 7'8 (2.67m x 2.34m)

Shower Room

FIRST FLOOR

Landing

Bedroom 1: 14'5 maximum x 14'5 maximum (4.40m x 4.40m)

Bedroom 2: 14'4 maximum x 14'4 maximum (4.37m x 4.37m)

Dressing/Sitting area: 16'6 x 9'10 (5.03m x 3.00m)

Bedroom 3: 11'5 x 8'1 (3.48m x 2.47m)

Bathroom

OUTBUILDING

GROUND FLOOR OUTBUILDING

Double Garage: 18'8 x 15'10 (5.69m x 4.83m)

FIRST FLOOR - OUTBUILDING

Office/Games Room: 15'9 x 12'4 (4.80m x 3.76m)

OUTSIDE

Substantial Plot With

Rear and Side Gardens

Driveway For Additional Cars



Main features

- Charming fully restored Grade II listed former gunpowder workers cottages
- Tucked away in a quiet private location with secluded landscaped gardens
- Walking distance to bus stop, supermarket, 2 pubs and a cafe
- Next to a nature reserve and Oare country park
- Detached double garage with useful room above



Nearest Schools

Primary Schools: Davington Primary 0.5 miles, Bysing Wood Primary 0.6 miles, Luddenham School 0.4 Miles

Secondary Schools: Queen Elizabeth's Grammar School 1.0 miles, The Abbey School 1.4 miles



Transport Information

Train Stations: Faversham 1.2 miles, Teynham 3.0 miles, Selling 4.4 miles



Address

Oare Road, Faversham, Kent, ME13



Directions

For directions to this property please contact us.



Wards
Helping you move forwards

Call Faversham Branch 01795 535517 ■ wardsof Kent.co.uk



- The seller is a person connected with Wards as defined in the Estate Agents Act 1979
- Legal advice should be taken to verify fixtures/fittings, planning, alterations and/or lease details
- Through a Homewise Home For Life Plan people aged 60+ can secure this property for up to 50% less, by purchasing a Lifetime Lease.

- If buying to let, the energy rating will need to be improved to at least 'E' rating before you can let the property
- Appliances & services are untested, dimensions are approximate and floor plans are not to scale

EPC RATING

CURRENT: **F(36)** POTENTIAL: **B(89)**

10832391/20250930/HR/PJ